

Product datasheet

Anti-GM130 antibody - Drosophila Golgi/Cis-Golgi Marker ab30637

★★★★☆ [3 Abreviews](#) [79 References](#) [4 Images](#)

Overview

Product name	Anti-GM130 antibody - Drosophila Golgi/Cis-Golgi Marker
Description	Rabbit polyclonal to GM130 - Drosophila Golgi/Cis-Golgi Marker
Host species	Rabbit
Tested applications	Suitable for: ICC/IF, WB
Species reactivity	Reacts with: Human, Drosophila melanogaster
Immunogen	Synthetic peptide conjugated to KLH derived from within residues 750 to the C-terminus of Fruit fly (Drosophila melanogaster) GM130. Read Abcam's proprietary immunogen policy (Peptide available as ab32335 .)
Positive control	Drosophila S2 Cells
General notes	<p>The Life Science industry has been in the grips of a reproducibility crisis for a number of years. Abcam is leading the way in addressing this with our range of recombinant monoclonal antibodies and knockout edited cell lines for gold-standard validation. Please check that this product meets your needs before purchasing.</p> <p>If you have any questions, special requirements or concerns, please send us an inquiry and/or contact our Support team ahead of purchase. Recommended alternatives for this product can be found below, along with publications, customer reviews and Q&As</p>

Properties

Form	Liquid
Storage instructions	Shipped at 4°C. Store at +4°C short term (1-2 weeks). Upon delivery aliquot. Store at -20°C or -80°C. Avoid freeze / thaw cycle.
Storage buffer	pH: 7.40 Preservative: 0.02% Sodium azide Constituents: 98.98% PBS, 1% BSA
Purity	Immunogen affinity purified

Batches of this product that have a concentration < 1mg/ml may have BSA added as a stabilising agent. If you would like information about the formulation of a specific lot, please contact our scientific support team who will be happy to help.

Clonality	Polyclonal
Isotype	IgG

Applications

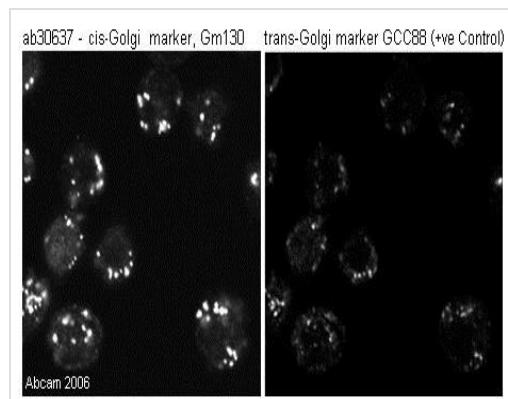
The Abpromise guarantee Our **Abpromise guarantee** covers the use of ab30637 in the following tested applications. The application notes include recommended starting dilutions; optimal dilutions/concentrations should be determined by the end user.

Application	Abreviews	Notes
ICC/IF	★★★★★ (2)	Use a concentration of 1 µg/ml.
WB	★★★★★ (1)	Use a concentration of 0.1 µg/ml. Detects a band of approximately 95 kDa (predicted molecular weight: 95 kDa).

Target

Function	Golgi auto-antigen; probably involved in maintaining cis-Golgi structure.
Sequence similarities	Belongs to the GOLGA2 family.
Domain	Extended rod-like protein with coiled-coil domains.
Cellular localization	Golgi apparatus > Golgi stack membrane.

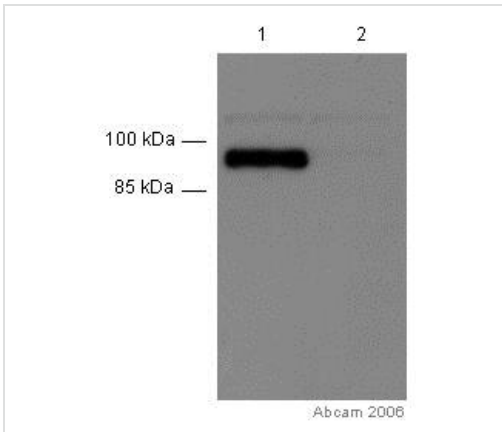
Images



The image shows staining of Drosophila S2 cells using ab30637 to cis-Golgi/Golgi marker, GM130. For comparison, S2 cells were stained with an antibody to the trans-Golgi marker, GCC88. Gm130 stained the cis-Golgi region and appears to be a superior Golgi marker to GCC88.

Immunocytochemistry/ Immunofluorescence - Anti-GM130 antibody - Drosophila Golgi/Cis-Golgi Marker (ab30637)

This image is courtesy of Sean Munro, MRC Laboratory of Molecular Biology



Western blot - Anti-GM130 antibody - Drosophila Golgi/Cis-Golgi Marker (ab30637)

This image is courtesy of Sean Munro, MRC Laboratory of Molecular Biology

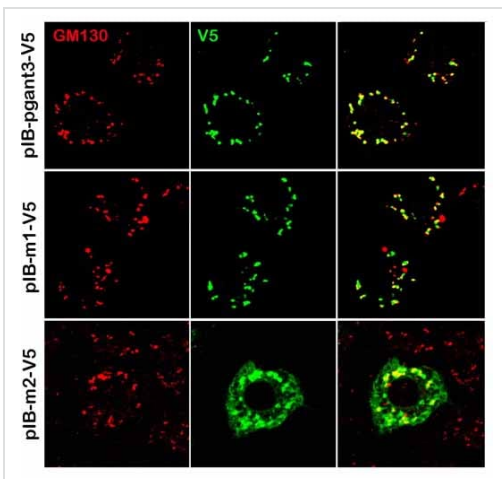
All lanes : Anti-GM130 antibody - Drosophila Golgi/Cis-Golgi Marker (ab30637) at 0.1 µg/ml

Lane 1 : Drosophila melanogaster S2 cell extract

Lane 2 : Drosophila melanogaster S2 cell extract + specific siRNA

Predicted band size: 95 kDa

Observed band size: 95 kDa

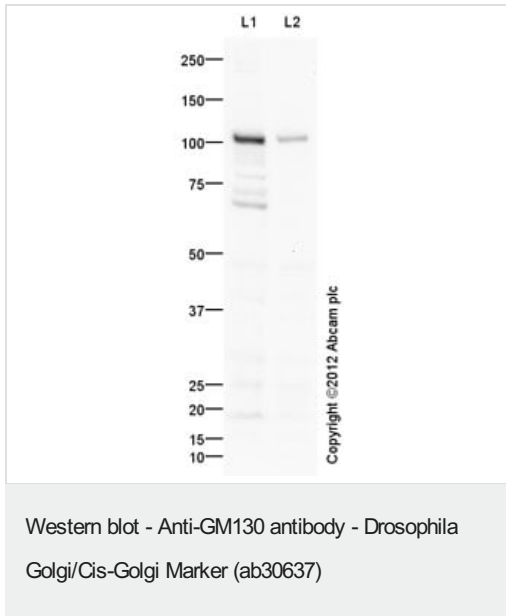


Immunocytochemistry/ Immunofluorescence - Anti-GM130 antibody - Drosophila Golgi/Cis-Golgi Marker (ab30637)

Image from Zhang L et al, J Biol Chem. 2010 Jun 18;285(25):19491-501. Epub 2010 Apr 6, Fig 1. DOI 10.1074/jbc.M109.098145 June 18, 2010 The Journal of Biological Chemistry, 285, 19491-19501.

ab30637 at a 1/100 dilution staining Golgi/Cis-Golgi in Drosophila S2R+ cells by Immunocytochemistry/ Immunofluorescence.

Expression of recombinant wild type pgant3 (pIB-pgant3-V5), pgant3m1 (pIB-m1-V5), and pgant3m2 (pIB-m2-V5) in Drosophila S2R+ cells. Cells were then stained for V5 and the Golgi marker GM130 revealing Golgi localization of wild type pgant3 and pgant3m1.



All lanes : Anti-GM130 antibody - Drosophila Golgi/Cis-Golgi Marker (ab30637) at 1 µg/ml

Lane 1 : Schneider L2 whole cell lysate (**ab14893**)

Lane 2 : Schneider L2 whole cell lysate (**ab14893**) with D. melanogaster GM130 peptide (**ab32335**) at 1 µg/ml

Lysates/proteins at 10 µg per lane.

Secondary

All lanes : Goat Anti-Rabbit IgG H&L (HRP) preadsorbed (**ab97080**) at 1/5000 dilution

Predicted band size: 95 kDa

Observed band size: 105 kDa

Additional bands at: 70 kDa. We are unsure as to the identity of these extra bands.

Please note: All products are "FOR RESEARCH USE ONLY. NOT FOR USE IN DIAGNOSTIC PROCEDURES"

Our Abpromise to you: Quality guaranteed and expert technical support

- Replacement or refund for products not performing as stated on the datasheet
- Valid for 12 months from date of delivery
- Response to your inquiry within 24 hours
- We provide support in Chinese, English, French, German, Japanese and Spanish
- Extensive multi-media technical resources to help you
- We investigate all quality concerns to ensure our products perform to the highest standards

If the product does not perform as described on this datasheet, we will offer a refund or replacement. For full details of the Abpromise, please visit <https://www.abcam.com/abpromise> or contact our technical team.

Terms and conditions

- Guarantee only valid for products bought direct from Abcam or one of our authorized distributors