



Product datasheet

Anti-GOLGA3 antibody ab223043

[3 Images](#)

Overview

Product name	Anti-GOLGA3 antibody
Description	Rabbit polyclonal to GOLGA3
Host species	Rabbit
Tested applications	Suitable for: ICC/IF, IHC-P
Species reactivity	Reacts with: Human
Immunogen	Recombinant fragment corresponding to Human GOLGA3 aa 200-450. Database link: Q08378
	<div>  Run BLAST with  Run BLAST with </div>
Positive control	IHC-P: Human brain and adrenal gland tissues. ICC/IF: HepG2 cells.
General notes	<p>The Life Science industry has been in the grips of a reproducibility crisis for a number of years. Abcam is leading the way in addressing this with our range of recombinant monoclonal antibodies and knockout edited cell lines for gold-standard validation. Please check that this product meets your needs before purchasing.</p> <p>If you have any questions, special requirements or concerns, please send us an inquiry and/or contact our Support team ahead of purchase. Recommended alternatives for this product can be found below, along with publications, customer reviews and Q&As</p>

Properties

Form	Liquid
Storage instructions	Shipped at 4°C. Store at +4°C short term (1-2 weeks). Upon delivery aliquot. Store at -20°C long term. Avoid freeze / thaw cycle.
Storage buffer	pH: 7.40 Preservative: 0.03% Proclin 300 Constituents: 50% Glycerol (glycerin, glycerine), PBS
Purity	Protein G purified
Purification notes	Purity >95%
Clonality	Polyclonal
Isotype	IgG

Applications

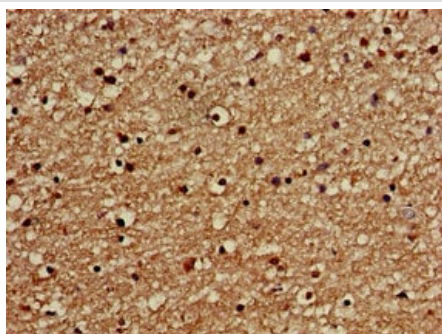
The Abpromise guarantee Our **Abpromise guarantee** covers the use of ab223043 in the following tested applications. The application notes include recommended starting dilutions; optimal dilutions/concentrations should be determined by the end user.

Application	Abreviews	Notes
ICC/IF		1/50 - 1/200.
IHC-P		1/20 - 1/200.

Target

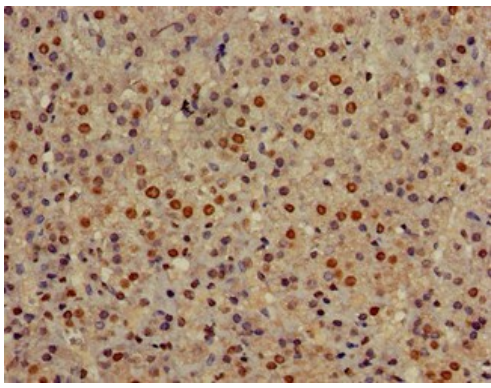
Function	Golgi auto-antigen; probably involved in maintaining Golgi structure.
Tissue specificity	Expressed in all tissues tested. Expressed in liver, testis, lung, heart, salivary gland and kidney.
Domain	Extended rod-like protein with coiled-coil domains.
Post-translational modifications	Cleaved by caspases in apoptotic cells.
Cellular localization	Cytoplasm. Golgi apparatus, Golgi stack membrane.

Images



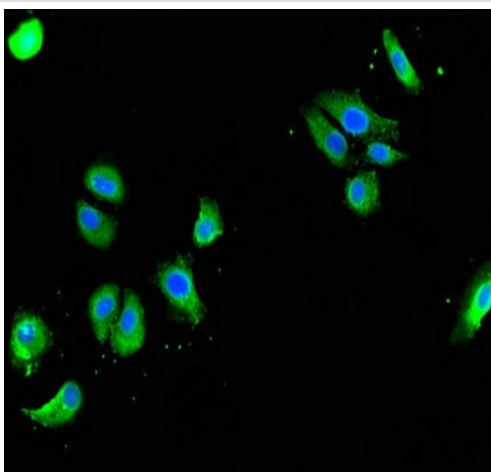
Paraffin-embedded human brain tissue stained for GOLGA3 using ab223043 at 1/100 dilution in immunohistochemical analysis.

Immunohistochemistry (Formalin/PFA-fixed paraffin-embedded sections) - Anti-GOLGA3 antibody (ab223043)



Paraffin-embedded human adrenal gland tissue stained for GOLGA3 using ab223043 at 1/100 dilution in immunohistochemical analysis.

Immunohistochemistry (Formalin/PFA-fixed paraffin-embedded sections) - Anti-GOLGA3 antibody (ab223043)



HepG2 (human liver hepatocellular carcinoma cell line) cells stained for GOLGA3 (green) using ab223043 at 1/100 dilution in ICC/IF. Secondary: Alexa Fluor 488-conjugated Goat Anti-Rabbit IgG(H+L).

Immunocytochemistry/ Immunofluorescence - Anti-GOLGA3 antibody (ab223043)

Please note: All products are "FOR RESEARCH USE ONLY. NOT FOR USE IN DIAGNOSTIC PROCEDURES"

Our Abpromise to you: Quality guaranteed and expert technical support

- Replacement or refund for products not performing as stated on the datasheet
- Valid for 12 months from date of delivery
- Response to your inquiry within 24 hours
- We provide support in Chinese, English, French, German, Japanese and Spanish
- Extensive multi-media technical resources to help you
- We investigate all quality concerns to ensure our products perform to the highest standards

If the product does not perform as described on this datasheet, we will offer a refund or replacement. For full details of the Abpromise, please visit <https://www.abcam.com/abpromise> or contact our technical team.

Terms and conditions

- Guarantee only valid for products bought direct from Abcam or one of our authorized distributors