

### Anti-GOLGA3 antibody ab96080

[3 References](#) [2 Images](#)

#### Overview

<b>Product name</b>	Anti-GOLGA3 antibody
<b>Description</b>	Rabbit polyclonal to GOLGA3
<b>Host species</b>	Rabbit
<b>Tested applications</b>	<b>Suitable for:</b> WB, ICC/IF
<b>Species reactivity</b>	<b>Reacts with:</b> Human
<b>Immunogen</b>	Synthetic peptide, corresponding to a region within amino acids 1436 and 1498 of GOLGA3 (NP_005886).
<b>Positive control</b>	293T, A431, H1299 cell lysates for WB and HeLa cells for IF
<b>General notes</b>	<p>The Life Science industry has been in the grips of a reproducibility crisis for a number of years. Abcam is leading the way in addressing this with our range of recombinant monoclonal antibodies and knockout edited cell lines for gold-standard validation. Please check that this product meets your needs before purchasing.</p> <p>If you have any questions, special requirements or concerns, please send us an inquiry and/or contact our Support team ahead of purchase. Recommended alternatives for this product can be found below, along with publications, customer reviews and Q&amp;As</p>

#### Properties

<b>Form</b>	Liquid
<b>Storage instructions</b>	Shipped at 4°C. Upon delivery aliquot and store at -20°C or -80°C. Avoid repeated freeze / thaw cycles.
<b>Storage buffer</b>	<p>pH: 7.00</p> <p>Preservative: 0.01% Thimerosal (merthiolate)</p> <p>Constituents: 1.21% Tris, 0.75% Glycine, 20% Glycerol (glycerin, glycerine)</p>
<b>Purity</b>	Immunogen affinity purified
<b>Clonality</b>	Polyclonal
<b>Isotype</b>	IgG

#### Applications

## The Abpromise guarantee

Our **Abpromise guarantee** covers the use of ab96080 in the following tested applications.

The application notes include recommended starting dilutions; optimal dilutions/concentrations should be determined by the end user.

Application	Abreviews	Notes
WB		1/500 - 1/3000. Predicted molecular weight: 167 kDa.
ICC/IF		1/100 - 1/200.

## Target

### Function

Golgi auto-antigen; probably involved in maintaining Golgi structure.

### Tissue specificity

Expressed in all tissues tested. Expressed in liver, testis, lung, heart, salivary gland and kidney.

### Domain

Extended rod-like protein with coiled-coil domains.

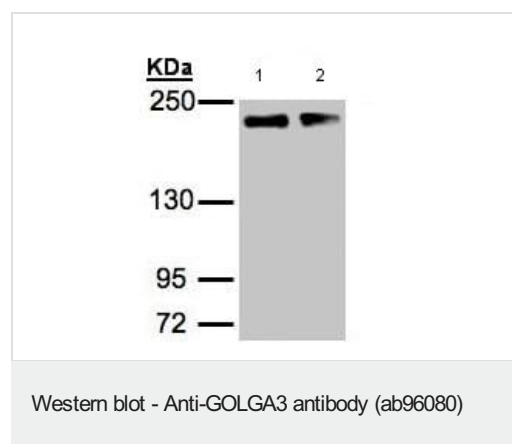
### Post-translational modifications

Cleaved by caspases in apoptotic cells.

### Cellular localization

Cytoplasm. Golgi apparatus, Golgi stack membrane.

## Images



**All lanes :** Anti-GOLGA3 antibody (ab96080) at 1/1000 dilution

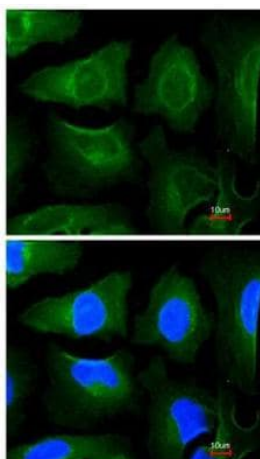
**Lane 1 :** A431 whole cell lysate

**Lane 2 :** H1299 whole cell lysate

Lysates/proteins at 30 µg per lane.

**Predicted band size:** 167 kDa

5% SDS PAGE



Immunofluorescence analysis of paraformaldehyde-fixed HeLa cells, using ab96080 at 1/200 dilution. Lower image merged with DNA probe.

Immunocytochemistry/ Immunofluorescence - Anti-GOLGA3 antibody (ab96080)

**Please note:** All products are "FOR RESEARCH USE ONLY. NOT FOR USE IN DIAGNOSTIC PROCEDURES"

### Our Abpromise to you: Quality guaranteed and expert technical support

---

- Replacement or refund for products not performing as stated on the datasheet
- Valid for 12 months from date of delivery
- Response to your inquiry within 24 hours
- We provide support in Chinese, English, French, German, Japanese and Spanish
- Extensive multi-media technical resources to help you
- We investigate all quality concerns to ensure our products perform to the highest standards

If the product does not perform as described on this datasheet, we will offer a refund or replacement. For full details of the Abpromise, please visit <https://www.abcam.com/abpromise> or contact our technical team.

### Terms and conditions

---

- Guarantee only valid for products bought direct from Abcam or one of our authorized distributors