

Product datasheet

Anti-GOLPH4/GPP130 antibody [EPR13439] α b197595

KO VALIDATED Recombinant RabMAb

★★★★☆ 1 Abreviews 1 References 5 Images

Overview

Product name	Anti-GOLPH4/GPP130 antibody [EPR13439]
Description	Rabbit monoclonal [EPR13439] to GOLPH4/GPP130
Host species	Rabbit
Tested applications	Suitable for: WB, IHC-P
Species reactivity	Reacts with: Human
Immunogen	Synthetic peptide. This information is proprietary to Abcam and/or its suppliers.
Positive control	WB: HeLa, HEK-293T and HepG2 whole cell lysates. IHC-P: Human renal adenocarcinoma tissue.
General notes	<p>This product is a recombinant monoclonal antibody, which offers several advantages including:</p> <ul style="list-style-type: none"> - High batch-to-batch consistency and reproducibility - Improved sensitivity and specificity - Long-term security of supply - Animal-free production <p>For more information see here.</p> <p>Our RabMAb[®] technology is a patented hybridoma-based technology for making rabbit monoclonal antibodies. For details on our patents, please refer to RabMAb[®] patents.</p>

Properties

Form	Liquid
Storage instructions	Shipped at 4°C. Store at +4°C short term (1-2 weeks). Upon delivery aliquot. Store at -20°C long term. Avoid freeze / thaw cycle.
Storage buffer	<p>pH: 7.2</p> <p>Preservative: 0.01% Sodium azide</p> <p>Constituents: 59% PBS, 40% Glycerol (glycerin, glycerine), 0.05% BSA</p>
Purity	Protein A purified
Clonality	Monoclonal
Clone number	EPR13439
Isotype	IgG

Applications

The Abpromise guarantee

Our **Abpromise guarantee** covers the use of ab197595 in the following tested applications.

The application notes include recommended starting dilutions; optimal dilutions/concentrations should be determined by the end user.

Application	Abreviews	Notes
WB		1/5000. Detects a band of approximately 130 kDa (predicted molecular weight: 82 kDa).
IHC-P		1/500 - 1/1000. Perform heat mediated antigen retrieval with Tris/EDTA buffer pH 9.0 before commencing with IHC staining protocol.

Target

Function

Plays a role in endosome to Golgi protein trafficking; mediates protein transport along the late endosome-bypass pathway from the early endosome to the Golgi.

Sequence similarities

Belongs to the GOLIM4 family.

Post-translational modifications

Phosphorylated probably by c-AMP-dependent kinases in its luminal part.

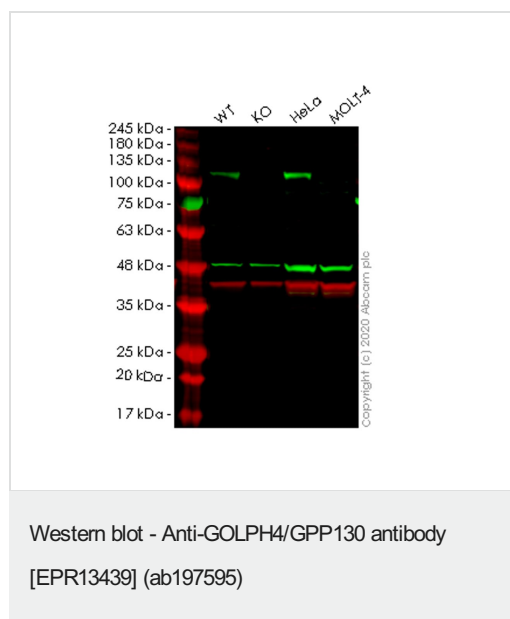
O-glycosylated; modified by sialic acid residues.

N-glycosylated; N-glycans are probably of the complex type and modified by sialic acid residues.

Cellular localization

Golgi apparatus > Golgi stack membrane. Endosome membrane. Localizes to cis and medial Golgi cisternae. Probably cycles between early Golgi and distal compartments like endosome.

Images



All lanes : Anti-GOLPH4/GPP130 antibody [EPR13439] (ab197595) at 1/1000 dilution

Lane 1 : Wild-type HEK293T cell lysate

Lane 2 : GOLIM4 knockout HEK293T cell lysate

Lane 3 : HeLa cell lysate

Lane 4 : MOLT-4 cell lysate

Lysates/proteins at 20 µg per lane.

Secondary

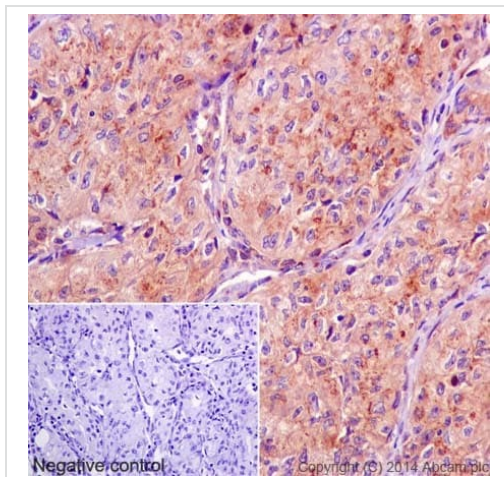
All lanes : Goat anti-Rabbit IgG H&L (IRDye® 800CW) preadsorbed (**ab216773**) at 1/10000 dilution

Predicted band size: 82 kDa

Observed band size: 130 kDa

Lanes 1-4: Merged signal (red and green). Green - ab197595 observed at 130 kDa. Red - loading control **ab8245** observed at 36 kDa.

ab197595 Anti-GOLPH4/GPP130 antibody [EPR13439] was shown to specifically react with GOLPH4/GPP130 in wild-type HEK293T cells. Loss of signal was observed when knockout cell line **ab266123** (knockout cell lysate **ab257455**) was used. Wild-type and GOLPH4/GPP130 knockout samples were subjected to SDS-PAGE. ab197595 and Anti-GAPDH antibody [6C5] - Loading Control (**ab8245**) were incubated overnight at 4°C at 1 in 1000 dilution and 1 in 20000 dilution respectively. Blots were developed with Goat anti-Rabbit IgG H&L (IRDye® 800CW) preadsorbed (**ab216773**) and Goat anti-Mouse IgG H&L (IRDye® 680RD) preadsorbed (**ab216776**) secondary antibodies at 1 in 20000 dilution for 1 hour at room temperature before imaging.

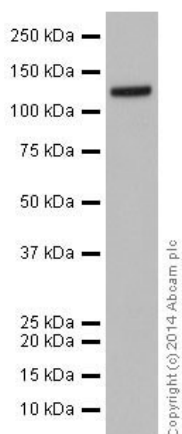


Immunohistochemistry (Formalin/PFA-fixed paraffin-embedded sections) - Anti-GOLPH4/GPP130 antibody [EPR13439] (ab197595)

Immunohistochemical analysis of paraffin-embedded Human renal adenocarcinoma tissue labeling GOLPH4/GPP130 with ab197595 at 1/1000 dilution, followed by Goat Anti-Rabbit IgG H&L (HRP) (**ab97051**) secondary antibody at 1/500 dilution. Cytoplasm staining on Human renal adenocarcinoma tissue is observed. Counter stained with Hematoxylin.

Negative control: Used PBS instead of primary antibody, secondary antibody is Goat Anti-Rabbit IgG H&L (HRP) (**ab97051**) at 1/500 dilution.

Perform heat mediated antigen retrieval with Tris/EDTA buffer pH 9.0 before commencing with IHC staining protocol.



Western blot - Anti-GOLPH4/GPP130 antibody [EPR13439] (ab197595)

Anti-GOLPH4/GPP130 antibody [EPR13439] (ab197595) at 1/2500 dilution + HeLa (Human epithelial cells from cervix adenocarcinoma) whole cell lysate at 20 µg

Secondary

Goat Anti-Rabbit IgG, (H+L), Peroxidase conjugated at 1/1000 dilution

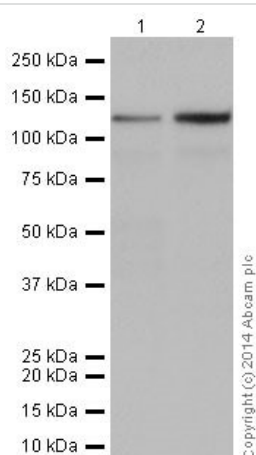
Predicted band size: 82 kDa

Observed band size: 130 kDa

Exposure time: 1 minute

Blocking/Dilution buffer: 5% NFDm/TBST.

The observed MW is consistent with what has been described in the literature PMID:20130081 and PMID:9201717



Western blot - Anti-GOLPH4/GPP130 antibody [EPR13439] (ab197595)

All lanes : Anti-GOLPH4/GPP130 antibody [EPR13439] (ab197595) at 1/5000 dilution

Lane 1 : HepG2 (Human liver hepatocellular carcinoma) whole cell lysate

Lane 2 : 293 (Human embryonic kidney) whole cell lysate

Lysates/proteins at 10 µg per lane.

Secondary

All lanes : Goat Anti-Rabbit IgG, (H+L), Peroxidase conjugated at 1/1000 dilution

Predicted band size: 82 kDa





Observed band size: 130 kDa

Exposure time: 3 minutes

Blocking/Dilution buffer: 5% NFDm/TBST.

The observed MW is consistent with what has been described in the literature (PMID:)20130081 and 9201717

Why choose a recombinant antibody?

 <p>Research with confidence Consistent and reproducible results</p>	 <p>Long-term and scalable supply Recombinant technology</p>
 <p>Success from the first experiment Confirmed specificity</p>	 <p>Ethical standards compliant Animal-free production</p>

Anti-GOLPH4/GPP130 antibody [EPR13439]
(ab197595)

Please note: All products are "FOR RESEARCH USE ONLY. NOT FOR USE IN DIAGNOSTIC PROCEDURES"

Our Abpromise to you: Quality guaranteed and expert technical support

- Replacement or refund for products not performing as stated on the datasheet
- Valid for 12 months from date of delivery
- Response to your inquiry within 24 hours
- We provide support in Chinese, English, French, German, Japanese and Spanish
- Extensive multi-media technical resources to help you
- We investigate all quality concerns to ensure our products perform to the highest standards

If the product does not perform as described on this datasheet, we will offer a refund or replacement. For full details of the Abpromise, please visit <https://www.abcam.com/abpromise> or contact our technical team.

Terms and conditions

- Guarantee only valid for products bought direct from Abcam or one of our authorized distributors