

Product datasheet

Anti-GPCR GPR124 antibody ab67280

[1 References](#) [1 Image](#)

Overview

Product name	Anti-GPCR GPR124 antibody
Description	Rabbit polyclonal to GPCR GPR124
Host species	Rabbit
Tested applications	Suitable for: WB
Species reactivity	Reacts with: Rat
Immunogen	Synthetic peptide (Human) of 14 amino acids from the central region
Positive control	WB: Rat Kidney Tissue Lysate
General notes	<p>The Life Science industry has been in the grips of a reproducibility crisis for a number of years. Abcam is leading the way in addressing this with our range of recombinant monoclonal antibodies and knockout edited cell lines for gold-standard validation. Please check that this product meets your needs before purchasing.</p> <p>If you have any questions, special requirements or concerns, please send us an inquiry and/or contact our Support team ahead of purchase. Recommended alternatives for this product can be found below, along with publications, customer reviews and Q&As</p>

Properties

Form	Liquid
Storage instructions	Shipped at 4°C. Store at +4°C.
Storage buffer	pH: 7.2 Preservative: 0.02% Sodium azide Constituent: PBS
Purity	Immunogen affinity purified
Clonality	Polyclonal
Isotype	IgG

Applications

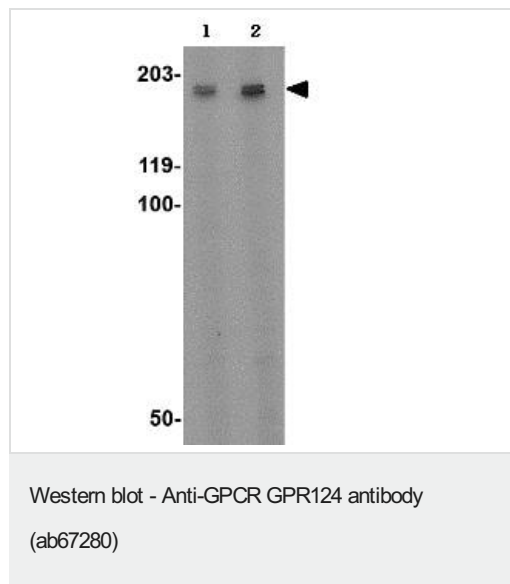
The Abpromise guarantee Our **Abpromise guarantee** covers the use of ab67280 in the following tested applications. The application notes include recommended starting dilutions; optimal dilutions/concentrations should be determined by the end user.

Application	Abreviews	Notes
WB		Use a concentration of 1 - 4 µg/ml. Detects a band of approximately 180 kDa (predicted molecular weight: 142 kDa).

Target

Function	Endothelial receptor that acts as an essential regulator of CNS angiogenesis. Required for normal endothelial cell sprouting and migration in the forebrain and neural tube.
Tissue specificity	Expressed in endothelial cells (at protein level). Abundantly expressed in tumor vessels, heart, placenta, ovary, small intestine, and colon.
Sequence similarities	<p>Belongs to the G-protein coupled receptor 2 family. LN-TM7 subfamily.</p> <p>Contains 1 GPS domain.</p> <p>Contains 1 Ig-like (immunoglobulin-like) domain.</p> <p>Contains 4 LRR (leucine-rich) repeats.</p> <p>Contains 1 LRRCT domain.</p> <p>Contains 1 LRRNT domain.</p>
Domain	Binds to DLG1 through its PDZ-binding motif.
Cellular localization	Cell membrane.

Images



Lane 1 : Anti-GPCR GPR124 antibody (ab67280) at 2 µg/ml

Lane 2 : Anti-GPCR GPR124 antibody (ab67280) at 4 µg/ml

All lanes : Rat kidney tissue lysate

Lysates/proteins at 15 µg per lane.

Predicted band size: 142 kDa

Observed band size: 176,180 kDa

Please note: All products are "FOR RESEARCH USE ONLY. NOT FOR USE IN DIAGNOSTIC PROCEDURES"

Our Abpromise to you: Quality guaranteed and expert technical support

- Replacement or refund for products not performing as stated on the datasheet
- Valid for 12 months from date of delivery

- Response to your inquiry within 24 hours
- We provide support in Chinese, English, French, German, Japanese and Spanish
- Extensive multi-media technical resources to help you
- We investigate all quality concerns to ensure our products perform to the highest standards

If the product does not perform as described on this datasheet, we will offer a refund or replacement. For full details of the Abpromise, please visit <https://www.abcam.com/abpromise> or contact our technical team.

Terms and conditions

- Guarantee only valid for products bought direct from Abcam or one of our authorized distributors