


Product datasheet

Anti-GPCR GPR126 antibody ab117092

★★★★☆ [1 Abreviews](#) [2 References](#) [2 Images](#)

Overview

Product name	Anti-GPCR GPR126 antibody
Description	Rabbit polyclonal to GPCR GPR126
Host species	Rabbit
Tested applications	Suitable for: IHC-P
Species reactivity	Reacts with: Human Predicted to work with: Mouse 
Immunogen	Synthetic peptide conjugated to KLH, from the N terminal domain of Human GPCR GPR126.
Positive control	Human liver and prostate tissue
General notes	<p>The Life Science industry has been in the grips of a reproducibility crisis for a number of years. Abcam is leading the way in addressing this with our range of recombinant monoclonal antibodies and knockout edited cell lines for gold-standard validation. Please check that this product meets your needs before purchasing.</p> <p>If you have any questions, special requirements or concerns, please send us an inquiry and/or contact our Support team ahead of purchase. Recommended alternatives for this product can be found below, along with publications, customer reviews and Q&As</p>

Properties

Form	Liquid
Storage instructions	Shipped at 4°C. Upon delivery aliquot and store at -80°C. Avoid freeze / thaw cycles.
Storage buffer	pH: 7.4 Preservative: 0.1% Sodium azide Constituent: 99% PBS
Purity	Immunogen affinity purified
Clonality	Polyclonal
Isotype	IgG

Applications

The Abpromise guarantee Our **Abpromise guarantee** covers the use of ab117092 in the following tested applications.

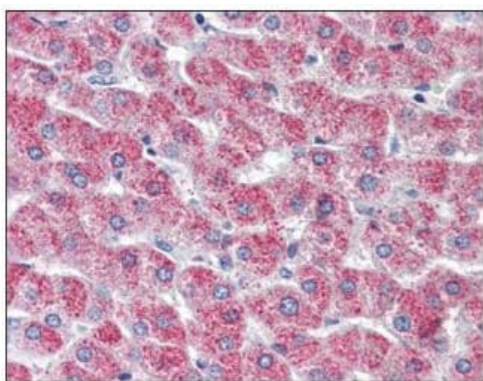
The application notes include recommended starting dilutions; optimal dilutions/concentrations should be determined by the end user.

Application	Abreviews	Notes
IHC-P	★★★★★ (1)	Use a concentration of 10 µg/ml. Perform enzymatic antigen retrieval before commencing with IHC staining protocol. Immunohistochemistry with formalin-fixed paraffin-embedded tissues requires pretreatment with Proteinase K.

Target

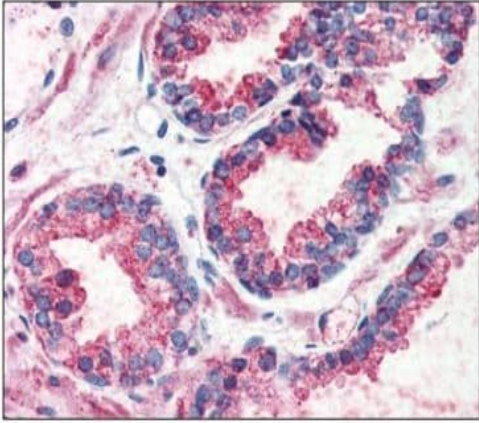
Function	Orphan receptor. May be required for normal differentiation of promyelinating Schwann cells and for normal myelination of axons. Signals probably through G-proteins to transiently elevate cAMP levels.
Tissue specificity	Expressed in placenta and to a lower extent in pancreas and liver. Detected in aortic endothelial cells but not in skin microvascular endothelial cells.
Sequence similarities	Belongs to the G-protein coupled receptor 2 family, LN-TM7 subfamily. Contains 1 CUB domain. Contains 1 GPS domain. Contains 1 pentaxin domain.
Post-translational modifications	Proteolytically cleaved into 2 conserved sites: one in the GPS domain (S1 site) and the other in the middle of the extracellular domain (S2 site). The proteolytic cleavage at S1 site generates an extracellular subunit and a seven-transmembrane subunit. Furin is involved in the cleavage of the S2 site generating a soluble fragment. Processing at the GPS domain occurred independent of and probably prior to the cleavage at the S2 site.
Cellular localization	Cell membrane. Detected on the cell surface of activated but not resting umbilical vein.

Images



ab117092 at 10 µg/ml staining GPCR GPR126 in Formalin-Fixed, Paraffin-Embedded Human Liver tissue by Immunohistochemistry.

Immunohistochemistry (Formalin/PFA-fixed paraffin-embedded sections) - Anti-GPCR GPR126 antibody (ab117092)



ab117092 at 10 µg/ml staining GPCR GPR126 in Formalin-Fixed, Paraffin-Embedded Human Prostate tissue by Immunohistochemistry.

Immunohistochemistry (Formalin/PFA-fixed paraffin-embedded sections) - Anti-GPCR GPR126 antibody (ab117092)

Please note: All products are "FOR RESEARCH USE ONLY. NOT FOR USE IN DIAGNOSTIC PROCEDURES"

Our Abpromise to you: Quality guaranteed and expert technical support

- Replacement or refund for products not performing as stated on the datasheet
- Valid for 12 months from date of delivery
- Response to your inquiry within 24 hours
- We provide support in Chinese, English, French, German, Japanese and Spanish
- Extensive multi-media technical resources to help you
- We investigate all quality concerns to ensure our products perform to the highest standards

If the product does not perform as described on this datasheet, we will offer a refund or replacement. For full details of the Abpromise, please visit <https://www.abcam.com/abpromise> or contact our technical team.

Terms and conditions

- Guarantee only valid for products bought direct from Abcam or one of our authorized distributors