


Product datasheet

Anti-GPCR GPR15 antibody - Extracellular domain ab188938

[1 References](#) [2 Images](#)

Overview

Product name	Anti-GPCR GPR15 antibody - Extracellular domain
Description	Rabbit polyclonal to GPCR GPR15 - Extracellular domain
Host species	Rabbit
Specificity	BLAST analysis of the peptide immunogen showed no homology with other Human proteins.
Tested applications	Suitable for: IHC-P
Species reactivity	Reacts with: Human Predicted to work with: Rabbit, Horse, Cow, Pig, Chimpanzee, Monkey, Gorilla, Common marmoset 
Immunogen	Synthetic peptide corresponding to Human GPCR GPR15 (extracellular). The peptide corresponds to 19 amino acids from the 2nd extracellular domain. (NP_005281.1) Database link: P49685
Positive control	Human liver and Human heart tissues.
General notes	<p>The Life Science industry has been in the grips of a reproducibility crisis for a number of years. Abcam is leading the way in addressing this with our range of recombinant monoclonal antibodies and knockout edited cell lines for gold-standard validation. Please check that this product meets your needs before purchasing.</p> <p>If you have any questions, special requirements or concerns, please send us an inquiry and/or contact our Support team ahead of purchase. Recommended alternatives for this product can be found below, along with publications, customer reviews and Q&As</p>

Properties

Form	Liquid
Storage instructions	Shipped at 4°C. Store at +4°C short term (1-2 weeks). Upon delivery aliquot. Store at -20°C long term. Avoid freeze / thaw cycle.
Storage buffer	pH: 7.4 Preservative: 0.1% Sodium azide Constituent: 99% PBS
Purity	Immunogen affinity purified

Clonality	Polyclonal
Isotype	IgG

Applications

The Abpromise guarantee Our **Abpromise guarantee** covers the use of ab188938 in the following tested applications.

The application notes include recommended starting dilutions; optimal dilutions/concentrations should be determined by the end user.

Application	Abreviews	Notes
IHC-P		Use a concentration of 10 µg/ml. Perform heat mediated antigen retrieval before commencing with IHC staining protocol. Antigen retrieval requires Proteinase K treatment.

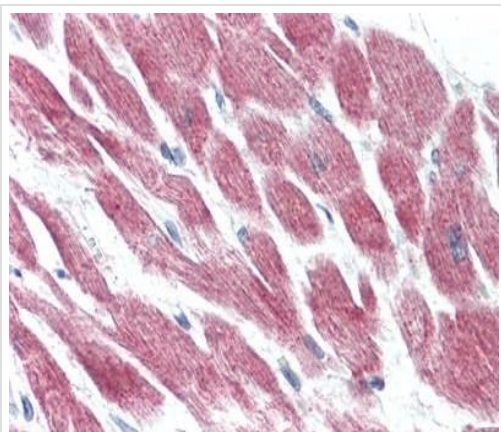
Target

Function Probable chemokine receptor. Alternative coreceptor with CD4 for HIV-1 infection.

Sequence similarities Belongs to the G-protein coupled receptor 1 family.

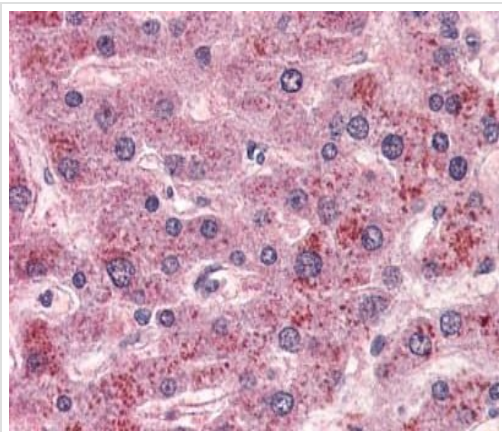
Cellular localization Cell membrane.

Images



Immunohistochemical analysis of formalin-fixed, paraffin-embedded Human heart tissue labeling GPCR GPR15 with ab188938 at 10 µg/ml.

Immunohistochemistry (Formalin/PFA-fixed paraffin-embedded sections) - Anti-GPCR GPR15 antibody - Extracellular domain (ab188938)



Immunohistochemical analysis of formalin-fixed, paraffin-embedded Human liver tissue labeling GPCR GPR15 with ab188938 at 10 µg/ml.

Immunohistochemistry (Formalin/PFA-fixed paraffin-embedded sections) - Anti-GPCR GPR15 antibody - Extracellular domain (ab188938)

Please note: All products are "FOR RESEARCH USE ONLY. NOT FOR USE IN DIAGNOSTIC PROCEDURES"

Our Abpromise to you: Quality guaranteed and expert technical support

- Replacement or refund for products not performing as stated on the datasheet
- Valid for 12 months from date of delivery
- Response to your inquiry within 24 hours
- We provide support in Chinese, English, French, German, Japanese and Spanish
- Extensive multi-media technical resources to help you
- We investigate all quality concerns to ensure our products perform to the highest standards

If the product does not perform as described on this datasheet, we will offer a refund or replacement. For full details of the Abpromise, please visit <https://www.abcam.com/abpromise> or contact our technical team.

Terms and conditions

- Guarantee only valid for products bought direct from Abcam or one of our authorized distributors