

## Product datasheet

# Anti-GPCR GPR32 antibody - Extracellular domain ab150642

[1 Image](#)

### Overview

---

|                            |   |
|----------------------------|---|
| <b>Product name</b>        | Anti-GPCR GPR32 antibody - Extracellular domain   |
| <b>Description</b>         | Rabbit polyclonal to GPCR GPR32 - Extracellular domain  |
| <b>Host species</b>        | Rabbit  |
| <b>Specificity</b>         | BLAST analysis of the peptide immunogen showed no homology with other human proteins.   |
| <b>Tested applications</b> | <b>Suitable for:</b> IHC-P  |
| <b>Species reactivity</b>  | <b>Reacts with:</b> Human   |
| <b>Immunogen</b>           | A synthetic 16 amino acid peptide from the 3rd extracellular domain of Human GPCR GPR32.  |
| <b>Positive control</b>    | Human brain tissue.   |
| <b>General notes</b>       | <p>The Life Science industry has been in the grips of a reproducibility crisis for a number of years. Abcam is leading the way in addressing this with our range of recombinant monoclonal antibodies and knockout edited cell lines for gold-standard validation. Please check that this product meets your needs before purchasing.</p> <p>If you have any questions, special requirements or concerns, please send us an inquiry and/or contact our Support team ahead of purchase. Recommended alternatives for this product can be found below, along with publications, customer reviews and Q&amp;As</p> |

### Properties

---

|                             |  |
|-----------------------------|--|
| <b>Form</b>                 | Liquid   |
| <b>Storage instructions</b> | Shipped at 4°C.  |
| <b>Storage buffer</b>       | pH: 7.4<br>Preservative: 0.1% Sodium azide<br>Constituent: 99% PBS |
| <b>Purity</b>               | Immunogen affinity purified  |
| <b>Clonality</b>            | Polyclonal   |
| <b>Isotype</b>              | IgG  |

### Applications

---

## The Abpromise guarantee

Our **Abpromise guarantee** covers the use of ab150642 in the following tested applications.

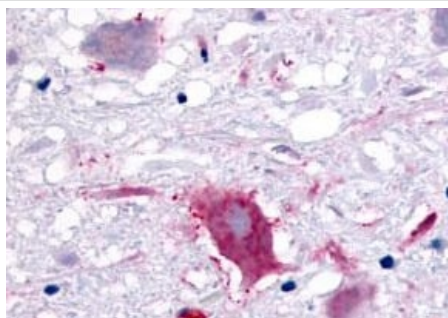
The application notes include recommended starting dilutions; optimal dilutions/concentrations should be determined by the end user.

| Application | Abreviews | Notes  |
|-------------|-----------|--|
| IHC-P       |           | Use a concentration of 38 µg/ml. Perform heat mediated antigen retrieval before commencing with IHC staining protocol. |

## Target

|                              |   |
|------------------------------|---|
| <b>Function</b>              | Orphan receptor.                                    |
| <b>Sequence similarities</b> | Belongs to the G-protein coupled receptor 1 family. |
| <b>Cellular localization</b> | Cell membrane.                                      |

## Images



Immunohistochemical analysis of formalin fixed, paraffin embedded Human brain tissue, neurons and glia, labelling GPCR GPR32 with ab150642 at 38 ug/ml, after heat induced antigen retrieval.

Immunohistochemistry (Formalin/PFA-fixed paraffin-embedded sections) - Anti-GPCR GPR32 antibody - Extracellular domain (ab150642)

**Please note:** All products are "FOR RESEARCH USE ONLY. NOT FOR USE IN DIAGNOSTIC PROCEDURES"

## Our Abpromise to you: Quality guaranteed and expert technical support

- Replacement or refund for products not performing as stated on the datasheet
- Valid for 12 months from date of delivery
- Response to your inquiry within 24 hours
- We provide support in Chinese, English, French, German, Japanese and Spanish
- Extensive multi-media technical resources to help you
- We investigate all quality concerns to ensure our products perform to the highest standards

If the product does not perform as described on this datasheet, we will offer a refund or replacement. For full details of the Abpromise, please visit <https://www.abcam.com/abpromise> or contact our technical team.

## Terms and conditions

---

- Guarantee only valid for products bought direct from Abcam or one of our authorized distributors