


### Anti-GPCR GPR87 antibody ab77517

[4 References](#) [2 Images](#)

#### Overview

Product name	Anti-GPCR GPR87 antibody
Description	Rabbit polyclonal to GPCR GPR87
Host species	Rabbit
Tested applications	<b>Suitable for:</b> ELISA, WB, ICC/IF
Species reactivity	<b>Reacts with:</b> Human <b>Predicted to work with:</b> Mouse 
Immunogen	Synthetic peptide derived from internal sequence of human GPCR GPR87.
Positive control	Extracts from HUVEC cells and HT-29 cells. HUVEC cells.
General notes	<p>The Life Science industry has been in the grips of a reproducibility crisis for a number of years. Abcam is leading the way in addressing this with our range of recombinant monoclonal antibodies and knockout edited cell lines for gold-standard validation. Please check that this product meets your needs before purchasing.</p> <p>If you have any questions, special requirements or concerns, please send us an inquiry and/or contact our Support team ahead of purchase. Recommended alternatives for this product can be found below, along with publications, customer reviews and Q&amp;As</p>

#### Properties

Form	Liquid
Storage instructions	Shipped at 4°C. Store at -20°C. Stable for 12 months at -20°C.
Storage buffer	<p>pH: 7.40</p> <p>Preservative: 0.02% Sodium azide</p> <p>Constituents: 50% Glycerol, 0.87% Sodium chloride, PBS</p>
Purity	Without Mg <sup>2+</sup> and Ca <sup>2+</sup> Immunogen affinity purified
Clonality	Polyclonal
Isotype	IgG

#### Applications

## The Abpromise guarantee

Our **Abpromise guarantee** covers the use of ab77517 in the following tested applications.

The application notes include recommended starting dilutions; optimal dilutions/concentrations should be determined by the end user.

Application	Abreviews	Notes
ELISA		Use at an assay dependent concentration.
WB		1/500 - 1/1000. Predicted molecular weight: 41 kDa.
ICC/IF		1/500 - 1/1000.

## Target

### Function

Receptor for lysophosphatidic acid (LPA). Necessary for p53/TP53-dependent survival in response to DNA damage.

### Tissue specificity

Expressed in placenta and prostate. Weaker expression in thymus. Not expressed in thalamus, hippocampus, pons or cerebellum. Overexpressed in squamous cell carcinoma of the lung.

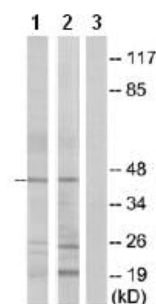
### Sequence similarities

Belongs to the G-protein coupled receptor 1 family.

### Cellular localization

Cell membrane.

## Images



Western blot - Anti-GPCR GPR87 antibody  
(ab77517)

**All lanes :** Anti-GPCR GPR87 antibody (ab77517) at 1/500 dilution

**Lane 1 :** Extracts from HUVEC cells

**Lane 2 :** Extracts from HT-29 cells

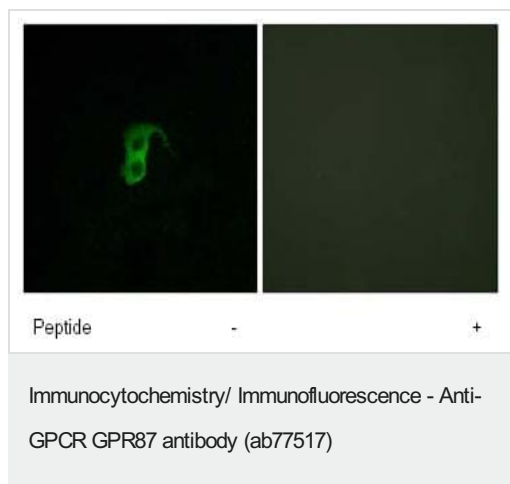
**Lane 3 :** Extracts from HUVEC cells with immunising peptide at 5  
µg

Lysates/proteins at 5 µg per lane.

**Predicted band size:** 41 kDa

**Observed band size:** 44 kDa

**Additional bands at:** 20 kDa, 25 kDa. We are unsure as to the  
identity of these extra bands.



Immunofluorescence analysis of GPCR GPR87 in HUVEC cells using ab77517, at 1/500 dilution, in the absence or presence of immunising peptide.

**Please note:** All products are "FOR RESEARCH USE ONLY. NOT FOR USE IN DIAGNOSTIC PROCEDURES"

### Our Abpromise to you: Quality guaranteed and expert technical support

- Replacement or refund for products not performing as stated on the datasheet
- Valid for 12 months from date of delivery
- Response to your inquiry within 24 hours
- We provide support in Chinese, English, French, German, Japanese and Spanish
- Extensive multi-media technical resources to help you
- We investigate all quality concerns to ensure our products perform to the highest standards

If the product does not perform as described on this datasheet, we will offer a refund or replacement. For full details of the Abpromise, please visit <https://www.abcam.com/abpromise> or contact our technical team.

### Terms and conditions

- Guarantee only valid for products bought direct from Abcam or one of our authorized distributors