

Product datasheet

Anti-GPCR GPRC5D antibody [6D9] - BSA and Azide free ab55044

★★★★★ [2 Abreviews](#) [1 Image](#)

Overview

Product name	Anti-GPCR GPRC5D antibody [6D9] - BSA and Azide free
Description	Mouse monoclonal [6D9] to GPCR GPRC5D - BSA and Azide free
Host species	Mouse
Tested applications	Suitable for: WB
Species reactivity	Reacts with: Recombinant fragment
Immunogen	Recombinant fragment corresponding to Human GPCR GPRC5D aa 261-346. Sequence: ELCILYRSCRQECPLQGNACPVTAYQHSFQVENQELSRA RDS DGAEEDVA LTSYGTPIQPQTVDPTQECFIPQAKLSPQQDAGGV

 [Run BLAST with](#)

 [Run BLAST with](#)

General notes

This product was changed from ascites to tissue culture supernatant on 13th Feb 2019. Please note that the dilutions may need to be adjusted accordingly. If you have any questions, please do not hesitate to contact our scientific support team.

The Life Science industry has been in the grips of a reproducibility crisis for a number of years. Abcam is leading the way in addressing this with our range of recombinant monoclonal antibodies and knockout edited cell lines for gold-standard validation. Please check that this product meets your needs before purchasing.

If you have any questions, special requirements or concerns, please send us an inquiry and/or contact our Support team ahead of purchase. Recommended alternatives for this product can be found below, along with publications, customer reviews and Q&As

Properties

Form	Liquid
Storage instructions	Shipped at 4°C. Upon delivery aliquot and store at -20°C or -80°C. Avoid repeated freeze / thaw cycles.
Storage buffer	pH: 7.40 Constituent: PBS
Carrier free	Yes

Purity	Tissue culture supernatant
Clonality	Monoclonal
Clone number	6D9
Isotype	IgG2b
Light chain type	kappa

Applications

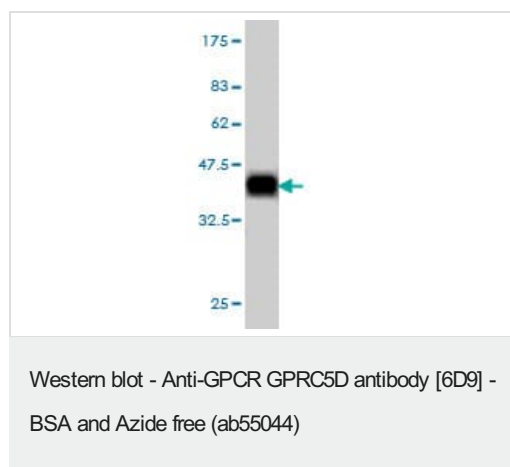
The Abpromise guarantee Our **Abpromise guarantee** covers the use of ab55044 in the following tested applications. The application notes include recommended starting dilutions; optimal dilutions/concentrations should be determined by the end user.

Application	Abreviews	Notes
WB		Use at an assay dependent concentration. Predicted molecular weight: 39 kDa. This antibody has only been tested in WB against the recombinant fragment used as immunogen. We have no data on the detection of endogenous protein.

Target

Tissue specificity	Widely expressed in the peripheral system. Expression pattern is high in pancreas, medium in kidney, small intestine, spleen and testis, low in lung, colon, leukocyte, prostate and thymus and not detectable in brain, heart, liver, placenta, skeletal muscle and ovary.
Sequence similarities	Belongs to the G-protein coupled receptor 3 family.
Cellular localization	Cell membrane.

Images



Western blot against tagged recombinant protein immunogen using ab55044 GPCR GPRC5D antibody at 1ug/ml. Predicted band size of immunogen is 35 kDa.

This antibody has only been tested in WB against the recombinant fragment used as immunogen. We have no data on the detection of endogenous protein.

This image was generated using the ascites version of the product.

Please note: All products are "FOR RESEARCH USE ONLY. NOT FOR USE IN DIAGNOSTIC PROCEDURES"

Our Abpromise to you: Quality guaranteed and expert technical support

- Replacement or refund for products not performing as stated on the datasheet
- Valid for 12 months from date of delivery
- Response to your inquiry within 24 hours

- We provide support in Chinese, English, French, German, Japanese and Spanish
- Extensive multi-media technical resources to help you
- We investigate all quality concerns to ensure our products perform to the highest standards

If the product does not perform as described on this datasheet, we will offer a refund or replacement. For full details of the Abpromise, please visit <https://www.abcam.com/abpromise> or contact our technical team.

Terms and conditions

- Guarantee only valid for products bought direct from Abcam or one of our authorized distributors