

## Product datasheet

# Anti-GPCR LGR6 antibody [EPR6874] ab126747

Recombinant RabMAb

★★★★☆ [1 Abreviews](#) [15 References](#) [8 Images](#)

### Overview

<b>Product name</b>	Anti-GPCR LGR6 antibody [EPR6874]
<b>Description</b>	Rabbit monoclonal [EPR6874] to GPCR LGR6
<b>Host species</b>	Rabbit
<b>Tested applications</b>	<b>Suitable for:</b> Flow Cyt (Intra), ICC/IF, WB, IHC-P
<b>Species reactivity</b>	<b>Reacts with:</b> Mouse, Rat, Human
<b>Immunogen</b>	Synthetic peptide. This information is proprietary to Abcam and/or its suppliers.
<b>Positive control</b>	IHC-P: Rat and mouse liver tissues. Human lung tissue; WB: HEK-293, HeLa, HUVEC, and SK-OV-3 cell lysates. Mouse, rat, and human liver tissue lysates. Mouse and rat lung tissue lysates; ICC/IF and Flow Cyt (intra): HeLa cells.
<b>General notes</b>	<p>This product is a recombinant monoclonal antibody, which offers several advantages including:</p> <ul style="list-style-type: none"><li>- High batch-to-batch consistency and reproducibility</li><li>- Improved sensitivity and specificity</li><li>- Long-term security of supply</li><li>- Animal-free production</li></ul> <p>For more information <a href="#">see here</a>.</p> <p>Our RabMAb<sup>®</sup> technology is a patented hybridoma-based technology for making rabbit monoclonal antibodies. For details on our patents, please refer to <a href="#">RabMAb<sup>®</sup> patents</a>.</p>

### Properties

<b>Form</b>	Liquid
<b>Storage instructions</b>	Shipped at 4°C. Store at +4°C short term (1-2 weeks). Upon delivery aliquot. Store at -20°C long term. Avoid freeze / thaw cycle.
<b>Storage buffer</b>	pH: 7.20 Preservative: 0.01% Sodium azide Constituents: 59% PBS, 40% Glycerol (glycerin, glycerine), 0.05% BSA
<b>Purity</b>	Protein A purified
<b>Clonality</b>	Monoclonal
<b>Clone number</b>	EPR6874

Isotype

IgG

## Applications

### The Abpromise guarantee

Our **Abpromise guarantee** covers the use of ab126747 in the following tested applications.

The application notes include recommended starting dilutions; optimal dilutions/concentrations should be determined by the end user.

Application	Abreviews	Notes
Flow Cyt (Intra)		1/10 - 1/100. <b>ab172730</b> - Rabbit monoclonal IgG, is suitable for use as an isotype control with this antibody.
ICC/IF	★★★★★ (1)	1/50. <b>For unpurified use at 1/100 - 1/500.</b>
WB		1/1000. Predicted molecular weight: 104 kDa. <b>For unpurified use at 1/1000 - 1/10000.</b>
IHC-P		1/240. Perform heat mediated antigen retrieval with citrate buffer pH 6 before commencing with IHC staining protocol. See <b>IHC antigen retrieval protocols</b> . <b>For unpurified use at 1/50 - 1/250.</b>

## Target

### Function

Orphan receptor.

### Sequence similarities

Belongs to the G-protein coupled receptor 1 family.

Contains 15 LRR (leucine-rich) repeats.

Contains 1 LRRNT domain.

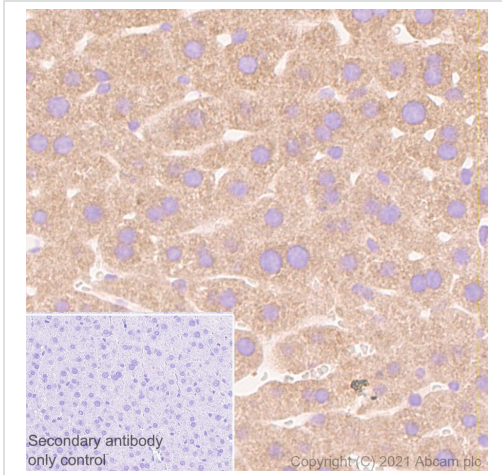
### Post-translational modifications

Phosphorylated upon DNA damage, probably by ATM or ATR.

### Cellular localization

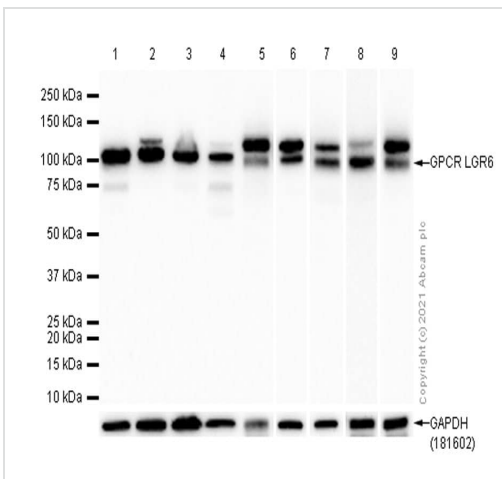
Cell membrane.

## Images



Immunohistochemistry (Formalin/PFA-fixed paraffin-embedded sections) - Anti-GPCR LGR6 antibody [EPR6874] (ab126747)

Immunohistochemistry (Formalin/PFA-fixed paraffin-embedded sections) analysis of Rat liver tissue sections labeling GPCR LGR6 with purified ab126747 at 1/240 dilution (0.61 µg/mL). Heat mediated antigen retrieval using Bond™ Epitope Retrieval Solution 1 (pH 6.0). The immunostaining was performed on a Leica Biosystems BOND® RX instrument. Rabbit specific IHC polymer detection kit HRP/DAB ([ab209101](#)) was used as the secondary antibody. Negative control: PBS instead of the primary antibody. Hematoxylin was used as a counterstain.



Western blot - Anti-GPCR LGR6 antibody [EPR6874] (ab126747)

**All lanes :** Anti-GPCR LGR6 antibody [EPR6874] (ab126747) at 1/1000 dilution

**Lane 1 :** HEK-293 (Human embryonic kidney epithelial cell) whole cell lysate

**Lane 2 :** HeLa (Human cervix adenocarcinoma epithelial cell) whole cell lysate

**Lane 3 :** HUVEC (Human umbilical vein endothelial cell) whole cell lysate

**Lane 4 :** SK-OV-3 (Human ovarian cancer epithelial cell) whole cell lysate

**Lane 5 :** Mouse liver lysate

**Lane 6 :** Rat liver lysate

**Lane 7 :** Human liver lysate

**Lane 8 :** Mouse lung lysate

**Lane 9 :** Rat lung lysate

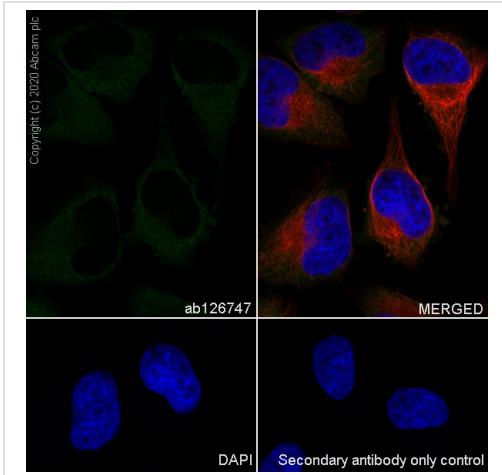
Lysates/proteins at 20 µg per lane.

## Secondary

**All lanes :** Goat Anti-Rabbit IgG (HRP) with minimal cross-reactivity with human IgG at 1/2000 dilution

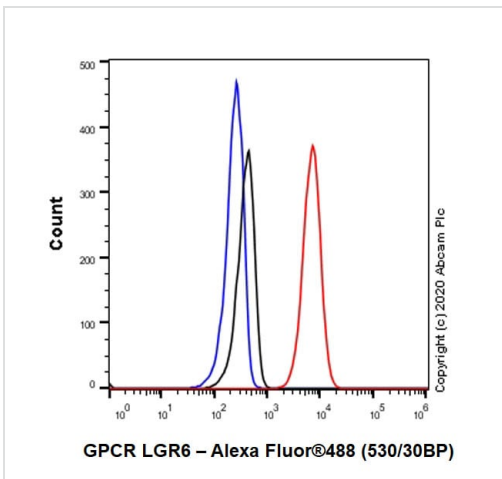
**Predicted band size:** 104 kDa

We are not sure about the extra band.



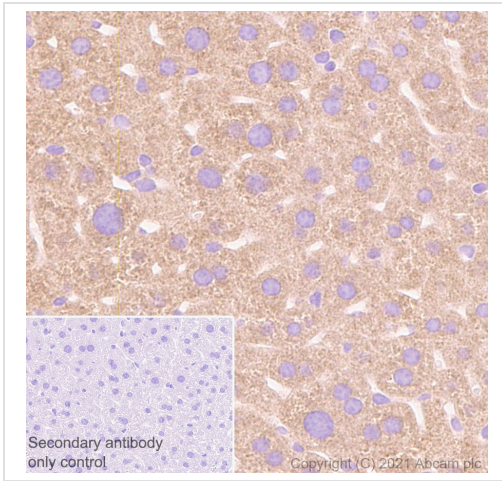
Immunocytochemistry/ Immunofluorescence - Anti-  
GPCR LGR6 antibody [EPR6874] (ab126747)

Immunocytochemistry analysis of HeLa (Human cervix adenocarcinoma epithelial cell) cells labeling GPCR LGR6 with Purified ab126747 at 1:50 dilution (3.0 µg/ml). Cells were fixed in 4% Paraformaldehyde and permeabilized with 0.1% tritonX-100. Cells were counterstained with Ab195889 Anti-alpha Tubulin antibody [DM1A] - Microtubule Marker (Alexa Fluor® 594) 1:200 (2.5 µg/ml). Goat anti rabbit IgG (Alexa Fluor® 488, **ab150077**) was used as the secondary antibody at 1:1000 (2 µg/ml) dilution. DAPI (blue) was used as nuclear counterstain. PBS instead of the primary antibody was used as the secondary antibody only control.



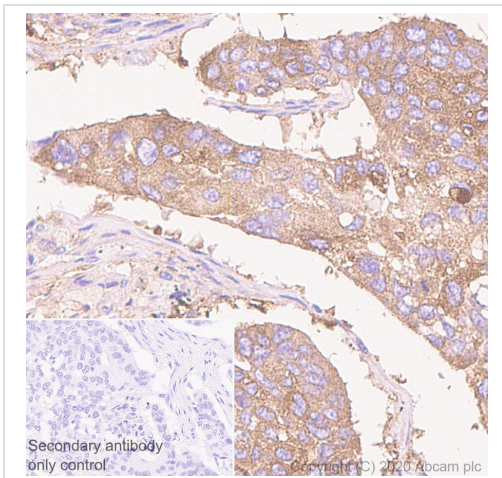
Flow Cytometry (Intracellular) - Anti-GPCR LGR6  
antibody [EPR6874] (ab126747)

Intracellular Flow Cytometry analysis of HeLa (Human cervix adenocarcinoma epithelial cell) cells labeling GPCR LGR6 with Purified ab126747 at 1/20 dilution (10 µg/ml) (Red). Cells were fixed with 4% Paraformaldehyde and permeabilised with 90% Methanol. A Goat anti rabbit IgG (Alexa Fluor® 488, **ab150077**) secondary antibody was used at 1/2000. Isotype control - Rabbit monoclonal IgG (Black). Unlabeled control - Cell without incubation with primary antibody and secondary antibody (Blue).



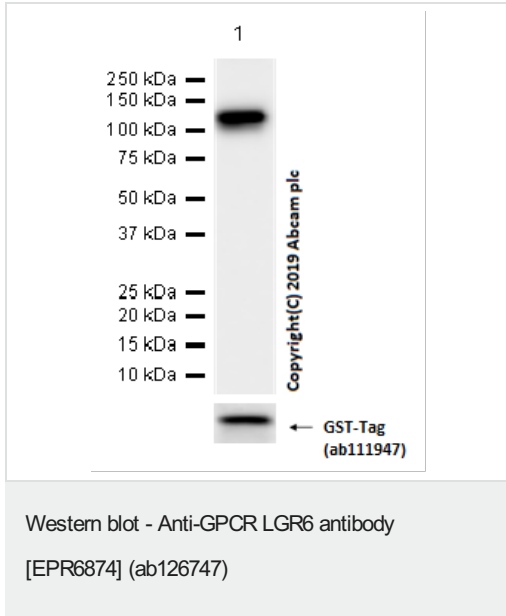
Immunohistochemistry (Formalin/PFA-fixed paraffin-embedded sections) analysis of Mouse liver tissue sections labeling GPCR LGR6 with purified ab126747 at 1/240 dilution (0.61  $\mu\text{g}/\text{mL}$ ). Heat mediated antigen retrieval using Bond™ Epitope Retrieval Solution 1 (pH 6.0). The immunostaining was performed on a Leica Biosystems BOND® RX instrument. Rabbit specific IHC polymer detection kit HRP/DAB (**ab209101**) was used as the secondary antibody. Negative control: PBS instead of the primary antibody. Hematoxylin was used as a counterstain.

Immunohistochemistry (Formalin/PFA-fixed paraffin-embedded sections) - Anti-GPCR LGR6 antibody [EPR6874] (ab126747)



Immunohistochemistry (Formalin/PFA-fixed paraffin-embedded sections) analysis of Human lung cancer tissue sections labeling GPCR LGR6 with purified ab126747 at 1/240 dilution (0.61  $\mu\text{g}/\text{mL}$ ). Heat mediated antigen retrieval using Bond™ Epitope Retrieval Solution 1 (pH 6.0). The immunostaining was performed on a Leica Biosystems BOND® RX instrument. Rabbit specific IHC polymer detection kit HRP/DAB (**ab209101**) was used as the secondary antibody. Negative control: PBS instead of the primary antibody. Hematoxylin was used as a counterstain.

Immunohistochemistry (Formalin/PFA-fixed paraffin-embedded sections) - Anti-GPCR LGR6 antibody [EPR6874] (ab126747)



Anti-GPCR LGR6 antibody [EPR6874] (ab126747) at 1/1000 dilution + GST-Tagged Recombinant Human GPCR LGR6 protein at 0.015 µg

**Secondary**





Goat Anti-Rabbit IgG H&L (HRP) (ab97051) at 1/20000 dilution

**Predicted band size:** 104 kDa

**Exposure time:** 10 seconds

Recombinant Human GPCR LGR6 protein (Cat#: [ab153472](#))

Why choose a recombinant antibody?

 <p><b>Research with confidence</b> Consistent and reproducible results</p>	 <p><b>Long-term and scalable supply</b> Recombinant technology</p>
 <p><b>Success from the first experiment</b> Confirmed specificity</p>	 <p><b>Ethical standards compliant</b> Animal-free production</p>

Anti-GPCR LGR6 antibody [EPR6874] (ab126747)

**Please note:** All products are "FOR RESEARCH USE ONLY. NOT FOR USE IN DIAGNOSTIC PROCEDURES"

**Our Abpromise to you: Quality guaranteed and expert technical support**

- Replacement or refund for products not performing as stated on the datasheet
- Valid for 12 months from date of delivery
- Response to your inquiry within 24 hours

- We provide support in Chinese, English, French, German, Japanese and Spanish
- Extensive multi-media technical resources to help you
- We investigate all quality concerns to ensure our products perform to the highest standards

If the product does not perform as described on this datasheet, we will offer a refund or replacement. For full details of the Abpromise, please visit <https://www.abcam.com/abpromise> or contact our technical team.

### **Terms and conditions**

---

- Guarantee only valid for products bought direct from Abcam or one of our authorized distributors