

Anti-GPCR LGR6 antibody [EPR6874] - BSA and Azide free ab240030

Recombinant RabMAb

7 Images

Overview

Product name	Anti-GPCR LGR6 antibody [EPR6874] - BSA and Azide free
Description	Rabbit monoclonal [EPR6874] to GPCR LGR6 - BSA and Azide free
Host species	Rabbit
Tested applications	Suitable for: Flow Cyt (Intra), IHC-P, ICC/IF, WB
Species reactivity	Reacts with: Mouse, Rat, Human
Immunogen	Synthetic peptide. This information is proprietary to Abcam and/or its suppliers.
Positive control	IHC-P: Rat and mouse liver tissues. Human lung tissue; WB: HEK-293, HeLa, HUVEC, and SK-OV-3 cell lysates. Mouse, rat, and human liver tissue lysates. Mouse and rat lung tissue lysates; ICC/IF and Flow Cyt (intra): HeLa cells.
General notes	<p>ab240030 is the carrier-free version of ab126747.</p> <p>Our carrier-free antibodies are typically supplied in a PBS-only formulation, purified and free of BSA, sodium azide and glycerol. The carrier-free buffer and high concentration allow for increased conjugation efficiency.</p> <p>This conjugation-ready format is designed for use with fluorochromes, metal isotopes, oligonucleotides, and enzymes, which makes them ideal for antibody labelling, functional and cell-based assays, flow-based assays (e.g. mass cytometry) and Multiplex Imaging applications.</p> <p>Use our conjugation kits for antibody conjugates that are ready-to-use in as little as 20 minutes with <1 minute hands-on-time and 100% antibody recovery: available for fluorescent dyes, HRP, biotin and gold.</p> <p>This product is compatible with the Maxpar[®] Antibody Labeling Kit from Fluidigm, without the need for antibody preparation. Maxpar[®] is a trademark of Fluidigm Canada Inc.</p> <p>This product is a recombinant monoclonal antibody, which offers several advantages including:</p> <ul style="list-style-type: none"> - High batch-to-batch consistency and reproducibility - Improved sensitivity and specificity - Long-term security of supply - Animal-free production <p>For more information see here.</p> <p>Our RabMAb[®] technology is a patented hybridoma-based technology for making rabbit monoclonal antibodies. For details on our patents, please refer to RabMAb[®] patents.</p>

Properties

Form	Liquid
Storage instructions	Shipped at 4°C. Store at +4°C. Do Not Freeze.
Storage buffer	pH: 7.2 Constituent: PBS
Carrier free	Yes
Purity	Protein A purified
Clonality	Monoclonal
Clone number	EPR6874
Isotype	IgG

Applications

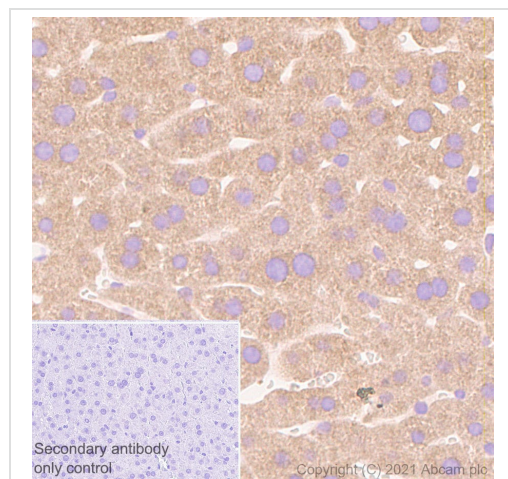
The Abpromise guarantee Our **Abpromise guarantee** covers the use of ab240030 in the following tested applications.

The application notes include recommended starting dilutions; optimal dilutions/concentrations should be determined by the end user.

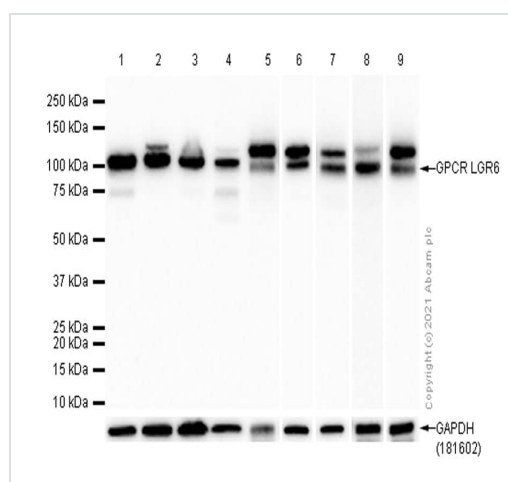
Application	Abreviews	Notes
Flow Cyt (Intra)		Use at an assay dependent concentration. ab199376 - Rabbit monoclonal IgG, is suitable for use as an isotype control with this antibody.
IHC-P		Use at an assay dependent concentration. Perform heat mediated antigen retrieval with citrate buffer pH 6 before commencing with IHC staining protocol. See <u>IHC antigen retrieval protocols</u> .
ICC/IF		Use at an assay dependent concentration.
WB		Use at an assay dependent concentration. Predicted molecular weight: 104 kDa.

Target

Function	Orphan receptor.
Sequence similarities	Belongs to the G-protein coupled receptor 1 family. Contains 15 LRR (leucine-rich) repeats. Contains 1 LRRNT domain.
Post-translational modifications	Phosphorylated upon DNA damage, probably by ATM or ATR.
Cellular localization	Cell membrane.



Immunohistochemistry (Formalin/PFA-fixed paraffin-embedded sections) - Anti-GPCR LGR6 antibody [EPR6874] - BSA and Azide free (ab240030)



Western blot - Anti-GPCR LGR6 antibody [EPR6874] - BSA and Azide free (ab240030)

This data was developed using [ab126747](#), the same antibody clone in a different buffer formulation.

Immunohistochemistry (Formalin/PFA-fixed paraffin-embedded sections) analysis of Rat liver tissue sections labeling GPCR LGR6 with purified [ab126747](#) at 1/240 dilution (0.61 µg/mL). Heat mediated antigen retrieval using Bond™ Epitope Retrieval Solution 1 (pH 6.0). The immunostaining was performed on a Leica Biosystems BOND® RX instrument. Rabbit specific IHC polymer detection kit HRP/DAB ([ab209101](#)) was used as the secondary antibody. Negative control: PBS instead of the primary antibody. Hematoxylin was used as a counterstain.

All lanes : Anti-GPCR LGR6 antibody [EPR6874] ([ab126747](#)) at 1/1000 dilution

Lane 1 : HEK-293 (Human embryonic kidney epithelial cell) whole cell lysate

Lane 2 : HeLa (Human cervix adenocarcinoma epithelial cell) whole cell lysate

Lane 3 : HUVEC (Human umbilical vein endothelial cell) whole cell lysate

Lane 4 : SK-OV-3 (Human ovarian cancer epithelial cell) whole cell lysate

Lane 5 : Mouse liver lysate

Lane 6 : Rat liver lysate

Lane 7 : Human liver lysate

Lane 8 : Mouse lung lysate

Lane 9 : Rat lung lysate

Lysates/proteins at 20 µg per lane.

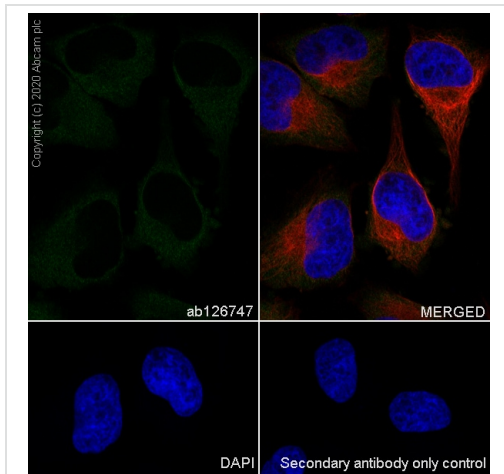
Secondary

All lanes : Goat Anti-Rabbit IgG (HRP) with minimal cross-reactivity with human IgG at 1/2000 dilution

Predicted band size: 104 kDa

We are not sure about the extra band.

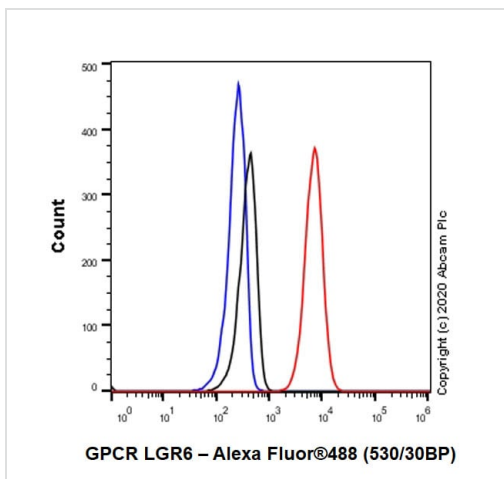
This data was developed using **ab126747**, the same antibody clone in a different buffer formulation.



Immunocytochemistry/ Immunofluorescence - Anti-
GPCR LGR6 antibody [EPR6874] - BSA and Azide
free (ab240030)

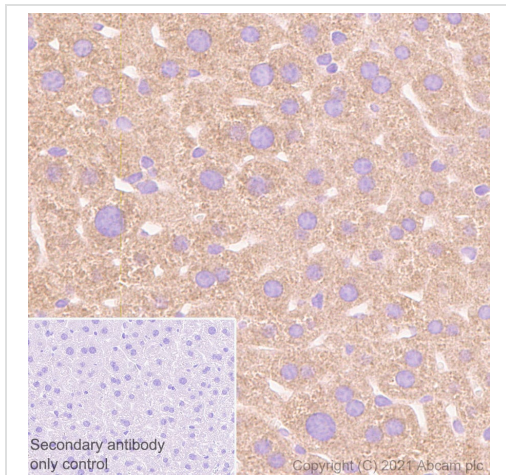
This data was developed using **ab126747**, the same antibody clone in a different buffer formulation.

Immunocytochemistry analysis of HeLa (Human cervix adenocarcinoma epithelial cell) cells labeling GPCR LGR6 with Purified **ab126747** at 1:50 dilution (3.0 µg/ml). Cells were fixed in 4% Paraformaldehyde and permeabilized with 0.1% tritonX-100. Cells were counterstained with Ab195889 Anti-alpha Tubulin antibody [DM1A] - Microtubule Marker (Alexa Fluor® 594) 1:200 (2.5 µg/ml). Goat anti rabbit IgG (Alexa Fluor® 488, **ab150077**) was used as the secondary antibody at 1:1000 (2 µg/ml) dilution. DAPI (blue) was used as nuclear counterstain. PBS instead of the primary antibody was used as the secondary antibody only control.



Flow Cytometry (Intracellular) - Anti-GPCR LGR6
antibody [EPR6874] - BSA and Azide free
(ab240030)

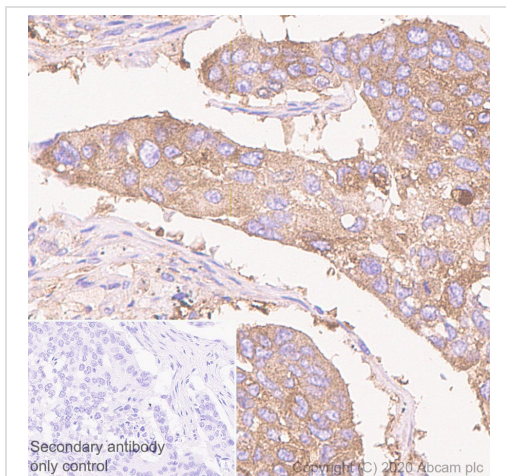
This data was developed using **ab126747**, the same antibody clone in a different buffer formulation. Intracellular Flow Cytometry analysis of HeLa (Human cervix adenocarcinoma epithelial cell) cells labeling GPCR LGR6 with Purified **ab126747** at 1/20 dilution (10 µg/ml) (Red). Cells were fixed with 4% Paraformaldehyde and permeabilised with 90% Methanol. A Goat anti rabbit IgG (Alexa Fluor® 488, **ab150077**) secondary antibody was used at 1/2000. Isotype control - Rabbit monoclonal IgG (Black). Unlabeled control - Cell without incubation with primary antibody and secondary antibody (Blue).



Immunohistochemistry (Formalin/PFA-fixed paraffin-embedded sections) - Anti-GPCR LGR6 antibody [EPR6874] - BSA and Azide free (ab240030)

This data was developed using [ab126747](#), the same antibody clone in a different buffer formulation.

Immunohistochemistry (Formalin/PFA-fixed paraffin-embedded sections) analysis of Mouse liver tissue sections labeling GPCR LGR6 with purified [ab126747](#) at 1/240 dilution (0.61 µg/mL). Heat mediated antigen retrieval using Bond™ Epitope Retrieval Solution 1 (pH 6.0). The immunostaining was performed on a Leica Biosystems BOND® RX instrument. Rabbit specific IHC polymer detection kit HRP/DAB ([ab209101](#)) was used as the secondary antibody. Negative control: PBS instead of the primary antibody. Hematoxylin was used as a counterstain.



Immunohistochemistry (Formalin/PFA-fixed paraffin-embedded sections) - Anti-GPCR LGR6 antibody [EPR6874] - BSA and Azide free (ab240030)

This data was developed using [ab126747](#), the same antibody clone in a different buffer formulation.

Immunohistochemistry (Formalin/PFA-fixed paraffin-embedded sections) analysis of Human lung cancer tissue sections labeling GPCR LGR6 with purified [ab126747](#) at 1/240 dilution (0.61 µg/mL). Heat mediated antigen retrieval using Bond™ Epitope Retrieval Solution 1 (pH 6.0). The immunostaining was performed on a Leica Biosystems BOND® RX instrument. Rabbit specific IHC polymer detection kit HRP/DAB ([ab209101](#)) was used as the secondary antibody. Negative control: PBS instead of the primary antibody. Hematoxylin was used as a counterstain.

Why choose a recombinant antibody?



Research with confidence
Consistent and reproducible results



Long-term and scalable supply
Recombinant technology



Success from the first experiment
Confirmed specificity



Ethical standards compliant
Animal-free production

Anti-GPCR LGR6 antibody [EPR6874] - BSA and Azide free (ab240030)

Please note: All products are "FOR RESEARCH USE ONLY. NOT FOR USE IN DIAGNOSTIC PROCEDURES"

Our Abpromise to you: Quality guaranteed and expert technical support

- Replacement or refund for products not performing as stated on the datasheet
- Valid for 12 months from date of delivery
- Response to your inquiry within 24 hours
- We provide support in Chinese, English, French, German, Japanese and Spanish
- Extensive multi-media technical resources to help you
- We investigate all quality concerns to ensure our products perform to the highest standards

If the product does not perform as described on this datasheet, we will offer a refund or replacement. For full details of the Abpromise, please visit <https://www.abcam.com/abpromise> or contact our technical team.

Terms and conditions

- Guarantee only valid for products bought direct from Abcam or one of our authorized distributors