


Anti-GPCR RDC1/CXCR-7 antibody ab38089

★★★★★ [3 Abreviews](#) [25 References](#) [1 Image](#)

Overview

Product name	Anti-GPCR RDC1/CXCR-7 antibody
Description	Rabbit polyclonal to GPCR RDC1/CXCR-7
Host species	Rabbit
Tested applications	Suitable for: WB
Species reactivity	Reacts with: Human Predicted to work with: Mouse 
Immunogen	Synthetic peptide corresponding to Human GPCR RDC1/CXCR-7 aa 1-100 conjugated to keyhole limpet haemocyanin. (Peptide available as ab38088)
General notes	<p>The Life Science industry has been in the grips of a reproducibility crisis for a number of years. Abcam is leading the way in addressing this with our range of recombinant monoclonal antibodies and knockout edited cell lines for gold-standard validation. Please check that this product meets your needs before purchasing.</p> <p>If you have any questions, special requirements or concerns, please send us an inquiry and/or contact our Support team ahead of purchase. Recommended alternatives for this product can be found below, along with publications, customer reviews and Q&As</p>

Properties

Form	Liquid
Storage instructions	Shipped at 4°C. Store at +4°C short term (1-2 weeks). Upon delivery aliquot. Store at -20°C or -80°C. Avoid freeze / thaw cycle.
Storage buffer	pH: 7.40 Preservative: 0.02% Sodium azide Constituent: PBS Batches of this product that have a concentration < 1mg/ml may have BSA added as a stabilising agent. If you would like information about the formulation of a specific lot, please contact our scientific support team who will be happy to help.
Purity	Immunogen affinity purified
Clonality	Polyclonal

Isotype

IgG

Applications

The Abpromise guarantee

Our **Abpromise guarantee** covers the use of ab38089 in the following tested applications.

The application notes include recommended starting dilutions; optimal dilutions/concentrations should be determined by the end user.

Application	Abreviews	Notes
WB	★★★★★ (2)	1/250. Detects a band of approximately 52 kDa (predicted molecular weight: 42 kDa). Can be blocked with Human GPCR RDC1/CXCR-7 peptide (ab38088) . GPCR RCD1 is glycosylated so it is not unexpected that it runs higher than predicted (based on primary structure) in SDS PAGE.

Target

Function

Receptor for CXCL12/SDF1. Acts as coreceptor with CXCR4 for a restricted number of HIV isolates.

Tissue specificity

Expressed in monocytes, basophils, and B-cells. Lower expression in CD4+ T-lymphocytes and natural killer cells.

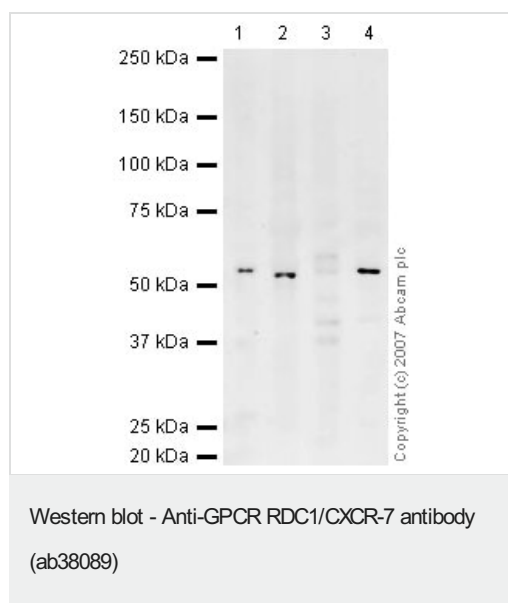
Sequence similarities

Belongs to the G-protein coupled receptor 1 family.

Cellular localization

Cell membrane.

Images



All lanes : Anti-GPCR RDC1/CXCR-7 antibody (ab38089) at 1/250 dilution

Lane 1 : Human Brain Tissue Lysate

Lane 2 : Human Testis Tissue Lysate

Lane 3 : Human Liver Tissue Lysate

Lane 4 : Human Heart Tissue Lysate

Lysates/proteins at 10 µg per lane.

Secondary

All lanes : IRDye 680 Conjugated Goat Anti-Rabbit IgG (H+L) at 1/10000 dilution

Performed under reducing conditions.

Predicted band size: 42 kDa

Observed band size: 52 kDa

GPCR RCD1 is glycosylated so it is not unexpected that it runs higher than predicted (based on primary structure) in SDS PAGE.

Please note: All products are "FOR RESEARCH USE ONLY. NOT FOR USE IN DIAGNOSTIC PROCEDURES"

Our Abpromise to you: Quality guaranteed and expert technical support

- Replacement or refund for products not performing as stated on the datasheet
- Valid for 12 months from date of delivery
- Response to your inquiry within 24 hours
- We provide support in Chinese, English, French, German, Japanese and Spanish
- Extensive multi-media technical resources to help you
- We investigate all quality concerns to ensure our products perform to the highest standards

If the product does not perform as described on this datasheet, we will offer a refund or replacement. For full details of the Abpromise, please visit <https://www.abcam.com/abpromise> or contact our technical team.

Terms and conditions

- Guarantee only valid for products bought direct from Abcam or one of our authorized distributors