

Product datasheet

Anti-GPCR RDC1/CXCR-7 antibody [EPR9321] ab138509

Recombinant RabMAb

★★★★★ 1 Abreviews 10 References 4 Images

Overview

Product name	Anti-GPCR RDC1/CXCR-7 antibody [EPR9321]
Description	Rabbit monoclonal [EPR9321] to GPCR RDC1/CXCR-7
Host species	Rabbit
Tested applications	Suitable for: WB Unsuitable for: Flow Cyt, ICC/IF or IHC-P
Species reactivity	Reacts with: Mouse, Rat, Human
Immunogen	Synthetic peptide corresponding to Human GPCR RDC1/CXCR-7 aa 300-400 (C terminal).
Positive control	THP-1, K562, Raji, C6, Raw 264.7, and NIH3T3 cell lysates.
General notes	This product is a recombinant monoclonal antibody, which offers several advantages including: <ul style="list-style-type: none"> - High batch-to-batch consistency and reproducibility - Improved sensitivity and specificity - Long-term security of supply - Animal-free production For more information see here . Our RabMAb [®] technology is a patented hybridoma-based technology for making rabbit monoclonal antibodies. For details on our patents, please refer to RabMAb[®] patents .

Properties

Form	Liquid
Storage instructions	Shipped at 4°C. Store at +4°C short term (1-2 weeks). Upon delivery aliquot. Store at -20°C long term. Avoid freeze / thaw cycle.
Storage buffer	pH: 7.2 Preservative: 0.01% Sodium azide Constituents: 59% PBS, 40% Glycerol (glycerin, glycerine), 0.5% BSA
Purity	Protein A purified
Clonality	Monoclonal
Clone number	EPR9321
Isotype	IgG

Applications

The Abpromise guarantee

Our **Abpromise guarantee** covers the use of ab138509 in the following tested applications.

The application notes include recommended starting dilutions; optimal dilutions/concentrations should be determined by the end user.

Application	Abreviews	Notes
WB	★★★★★ (1)	1/1000 - 1/10000. Detects a band of approximately 41 kDa (predicted molecular weight: 41 kDa).

Application notes

Is unsuitable for Flow Cyt, ICC/IF or IHC-P.

Target

Function

Receptor for CXCL12/SDF1. Acts as coreceptor with CXCR4 for a restricted number of HIV isolates.

Tissue specificity

Expressed in monocytes, basophils, and B-cells. Lower expression in CD4+ T-lymphocytes and natural killer cells.

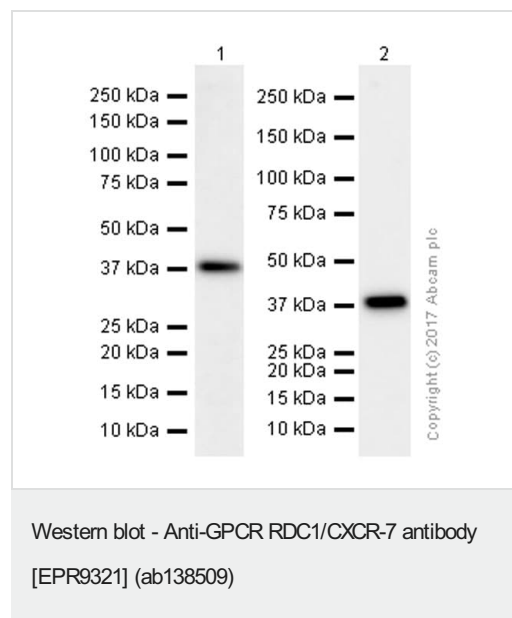
Sequence similarities

Belongs to the G-protein coupled receptor 1 family.

Cellular localization

Cell membrane.

Images



All lanes : Anti-GPCR RDC1/CXCR-7 antibody [EPR9321] (ab138509) at 1/10000 dilution (purified)

Lane 1 : NIH/3T3 (Mouse embryonic fibroblast) whole cell lysates

Lane 2 : C6 (Rat glial tumor glial cell) whole cell lysates

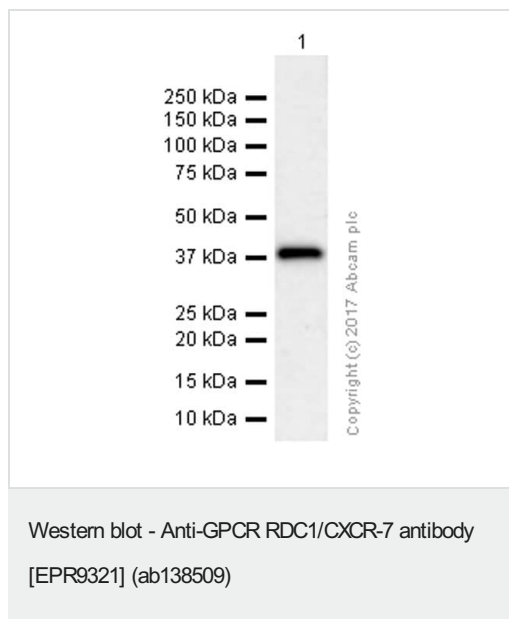
Lysates/proteins at 15 µg per lane.

Secondary

All lanes : Goat Anti-Rabbit IgG H&L (HRP) (**ab97051**) at 1/20000 dilution

Predicted band size: 41 kDa

Blocking and diluting buffer : 5% NFDm/TBST



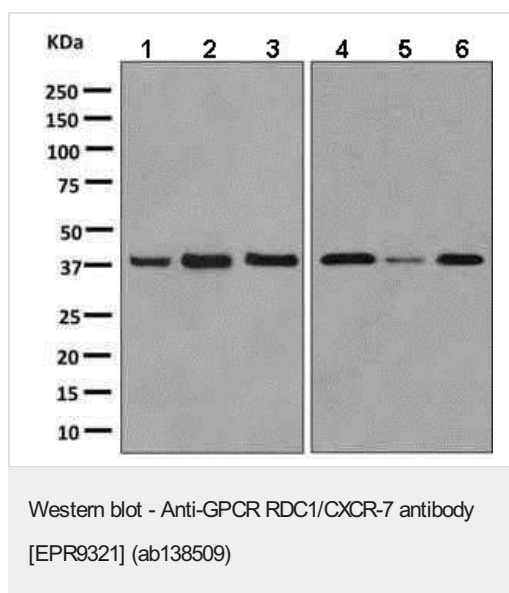
Anti-GPCR RDC1/CXCR-7 antibody [EPR9321] (ab138509) at 1/10000 dilution (purified) + THP-1 (Human monocytic leukemia monocyte) whole cell lysates at 15 µg

Secondary

Goat Anti-Rabbit IgG H&L (HRP) ([ab97051](#)) at 1/20000 dilution

Predicted band size: 41 kDa

Blocking and diluting buffer : 5% NFDm/TBST



All lanes : Anti-GPCR RDC1/CXCR-7 antibody [EPR9321] (ab138509) at 1/1000 dilution (unpurified)

Lane 1 : THP-1 cell lysate

Lane 2 : K562 cell lysate

Lane 3 : Raji cell lysate

Lane 4 : C6 cell lysate

Lane 5 : Raw 264.7 cell lysate

Lane 6 : NIH3T3 cell lysate

Lysates/proteins at 10 µg per lane.

Secondary

All lanes : HRP labelled goat anti-rabbit at 1/2000 dilution

Predicted band size: 41 kDa

Observed band size: 41 kDa

Why choose a recombinant antibody?



Research with confidence
Consistent and reproducible results



Long-term and scalable supply
Recombinant technology



Success from the first experiment
Confirmed specificity



Ethical standards compliant
Animal-free production

Anti-GPCR RDC1/CXCR-7 antibody [EPR9321]
(ab138509)

Please note: All products are "FOR RESEARCH USE ONLY. NOT FOR USE IN DIAGNOSTIC PROCEDURES"

Our Abpromise to you: Quality guaranteed and expert technical support

- Replacement or refund for products not performing as stated on the datasheet
- Valid for 12 months from date of delivery
- Response to your inquiry within 24 hours
- We provide support in Chinese, English, French, German, Japanese and Spanish
- Extensive multi-media technical resources to help you
- We investigate all quality concerns to ensure our products perform to the highest standards

If the product does not perform as described on this datasheet, we will offer a refund or replacement. For full details of the Abpromise, please visit <https://www.abcam.com/abpromise> or contact our technical team.

Terms and conditions

- Guarantee only valid for products bought direct from Abcam or one of our authorized distributors