


Product datasheet

Anti-GPCR TAS1R2 antibody ab77346

★☆☆☆☆ [1 Abreviews](#) [1 References](#) [1 Image](#)

Overview

Product name	Anti-GPCR TAS1R2 antibody
Description	Goat polyclonal to GPCR TAS1R2
Host species	Goat
Tested applications	Suitable for: WB
Species reactivity	Reacts with: Human Predicted to work with: Non human primates 
Immunogen	Synthetic peptide: CSKRCQSGQKKKP , corresponding to internal sequence amino acids 495-507 of Human GPCR TAS1R2 (NP_689418.2) Run BLAST with Run BLAST with
Positive control	Human Pancreas lysate.
General notes	<p>The Life Science industry has been in the grips of a reproducibility crisis for a number of years. Abcam is leading the way in addressing this with our range of recombinant monoclonal antibodies and knockout edited cell lines for gold-standard validation. Please check that this product meets your needs before purchasing.</p> <p>If you have any questions, special requirements or concerns, please send us an inquiry and/or contact our Support team ahead of purchase. Recommended alternatives for this product can be found below, along with publications, customer reviews and Q&As</p>

Properties

Form	Liquid
Storage instructions	Shipped at 4°C. Upon delivery aliquot and store at -20°C. Avoid repeated freeze / thaw cycles.
Storage buffer	pH: 7.30 Preservative: 0.02% Sodium azide Constituents: 0.5% BSA, 0.5% Tris buffered saline
Purity	Immunogen affinity purified
Purification notes	ab77346 is purified from goat serum by ammonium sulphate precipitation followed by antigen affinity chromatography using the immunising peptide.

Clonality	Polyclonal
Isotype	IgG

Applications

The Abpromise guarantee Our **Abpromise guarantee** covers the use of ab77346 in the following tested applications. The application notes include recommended starting dilutions; optimal dilutions/concentrations should be determined by the end user.

Application	Abreviews	Notes
WB		

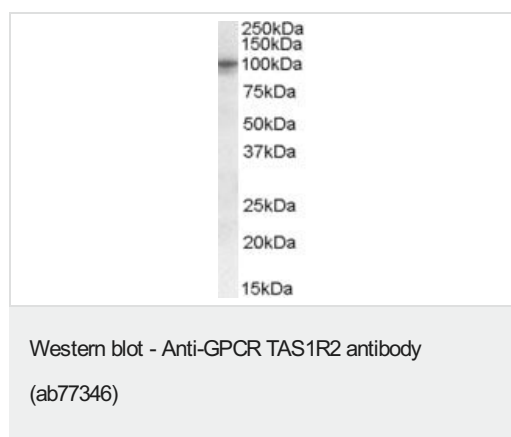
Application notes Peptide ELISA: Antibody detection limit dilution: 1/32000.
WB: Use at a concentration of 1 - 3 µg/ml. Detects a band of approximately 100 kDa (predicted molecular weight: 95 kDa).

Not yet tested in other applications.
Optimal dilutions/concentrations should be determined by the end user.

Target

Function Putative taste receptor. TAS1R2/TAS1R3 recognizes diverse natural and synthetic sweeteners.
Sequence similarities Belongs to the G-protein coupled receptor 3 family. TAS1R subfamily.
Cellular localization Cell membrane.

Images



Anti-GPCR TAS1R2 antibody (ab77346) at 0.3 µg/ml + Human pancreas lysate in RIPA buffer at 35 µg

Predicted band size: 95 kDa
Observed band size: 100 kDa

Primary incubation was 1 hour. Detected by chemiluminescence.

Please note: All products are "FOR RESEARCH USE ONLY. NOT FOR USE IN DIAGNOSTIC PROCEDURES"

Our Abpromise to you: Quality guaranteed and expert technical support

- Replacement or refund for products not performing as stated on the datasheet

- Valid for 12 months from date of delivery
- Response to your inquiry within 24 hours

- We provide support in Chinese, English, French, German, Japanese and Spanish
- Extensive multi-media technical resources to help you
- We investigate all quality concerns to ensure our products perform to the highest standards

If the product does not perform as described on this datasheet, we will offer a refund or replacement. For full details of the Abpromise, please visit <https://www.abcam.com/abpromise> or contact our technical team.

Terms and conditions

- Guarantee only valid for products bought direct from Abcam or one of our authorized distributors