


### Anti-GPR 139 antibody ab188742

1 Image

#### Overview

<b>Product name</b>	Anti-GPR 139 antibody
<b>Description</b>	Rabbit polyclonal to GPR 139
<b>Host species</b>	Rabbit
<b>Specificity</b>	BLAST analysis of the peptide immunogen showed no homology with other human proteins, except GPR142 (65%).
<b>Tested applications</b>	<b>Suitable for:</b> IHC-P
<b>Species reactivity</b>	<b>Reacts with:</b> Human <b>Predicted to work with:</b> Mouse, Rabbit, Horse, Chicken, Hamster, Cow, Dog, Pig, Monkey, Zebrafish 
<b>Immunogen</b>	Synthetic peptide corresponding to Human GPR 139. (17 amino acid peptide from the first cytoplasmic domain). Database link: <a href="#">Q6DWJ6</a>
<b>Positive control</b>	Human brain, neurons and glia.
<b>General notes</b>	<p>The Life Science industry has been in the grips of a reproducibility crisis for a number of years. Abcam is leading the way in addressing this with our range of recombinant monoclonal antibodies and knockout edited cell lines for gold-standard validation. Please check that this product meets your needs before purchasing.</p> <p>If you have any questions, special requirements or concerns, please send us an inquiry and/or contact our Support team ahead of purchase. Recommended alternatives for this product can be found below, along with publications, customer reviews and Q&amp;As</p>

#### Properties

<b>Form</b>	Liquid
<b>Storage instructions</b>	Shipped at 4°C. Store at +4°C short term (1-2 weeks). Upon delivery aliquot. Store at -20°C long term. Avoid freeze / thaw cycle.
<b>Storage buffer</b>	pH: 7.4 Preservative: 0.1% Sodium azide Constituent: 99% PBS
<b>Purity</b>	Immunogen affinity purified
<b>Clonality</b>	Polyclonal

Isotype

IgG

## Applications

### The Abpromise guarantee

Our **Abpromise guarantee** covers the use of ab188742 in the following tested applications.

The application notes include recommended starting dilutions; optimal dilutions/concentrations should be determined by the end user.

Application	Abreviews	Notes
IHC-P		Use a concentration of 6 µg/ml.

## Target

### Function

Orphan receptor. Seems to act through a G(q/11)-mediated pathway.

### Tissue specificity

Expressed almost exclusively in the brain. Detected at very low levels in the peripheral tissues.

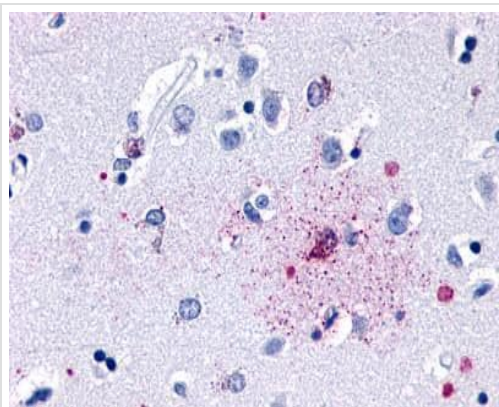
### Sequence similarities

Belongs to the G-protein coupled receptor 1 family.

### Cellular localization

Cell membrane.

## Images



Immunohistochemical analysis of formalin-fixed, paraffin-embedded Human brain, neurons and glia labeling GPR 139 with ab188742 at 6 µg/ml.

Immunohistochemistry (Formalin/PFA-fixed paraffin-embedded sections) - Anti-GPR 139 antibody (ab188742)

**Please note:** All products are "FOR RESEARCH USE ONLY. NOT FOR USE IN DIAGNOSTIC PROCEDURES"

## Our Abpromise to you: Quality guaranteed and expert technical support

- Replacement or refund for products not performing as stated on the datasheet
- Valid for 12 months from date of delivery
- Response to your inquiry within 24 hours

- We provide support in Chinese, English, French, German, Japanese and Spanish
- Extensive multi-media technical resources to help you
- We investigate all quality concerns to ensure our products perform to the highest standards

If the product does not perform as described on this datasheet, we will offer a refund or replacement. For full details of the Abpromise, please visit <https://www.abcam.com/abpromise> or contact our technical team.

#### **Terms and conditions**

---

- Guarantee only valid for products bought direct from Abcam or one of our authorized distributors