


Product datasheet

Anti-GPRC5A antibody - Extracellular domain ab188905

2 Images

Overview

Product name	Anti-GPRC5A antibody - Extracellular domain
Description	Rabbit polyclonal to GPRC5A - Extracellular domain
Host species	Rabbit
Specificity	BLAST analysis of the peptide immunogen showed no homology with other Human proteins.
Tested applications	Suitable for: IHC-P
Species reactivity	Reacts with: Human Predicted to work with: Mouse, Rat, Hamster, Cow, Dog, Monkey, Gorilla 
Immunogen	Synthetic peptide corresponding to Human GPRC5A (extracellular). (16 amino acid peptide from the 2nd extracellular domain; NP_003970.1). Database link: Q8NFJ5
Positive control	Human testis and prostate tissues; GPRC5A-transfected HEK293 cells.
General notes	<p>The Life Science industry has been in the grips of a reproducibility crisis for a number of years. Abcam is leading the way in addressing this with our range of recombinant monoclonal antibodies and knockout edited cell lines for gold-standard validation. Please check that this product meets your needs before purchasing.</p> <p>If you have any questions, special requirements or concerns, please send us an inquiry and/or contact our Support team ahead of purchase. Recommended alternatives for this product can be found below, along with publications, customer reviews and Q&As</p>

Properties

Form	Liquid
Storage instructions	Shipped at 4°C. Store at +4°C short term (1-2 weeks). Upon delivery aliquot. Store at -20°C long term. Avoid freeze / thaw cycle.
Storage buffer	pH: 7.4 Preservative: 0.1% Sodium azide Constituent: 99% PBS
Purity	Immunogen affinity purified
Clonality	Polyclonal

Isotype

IgG

Applications

The Abpromise guarantee

Our **Abpromise guarantee** covers the use of ab188905 in the following tested applications.

The application notes include recommended starting dilutions; optimal dilutions/concentrations should be determined by the end user.

Application	Abreviews	Notes
IHC-P		Use a concentration of 18 - 36 µg/ml. Perform heat mediated antigen retrieval before commencing with IHC staining protocol.

Target

Function

Unknown. This G-protein coupled receptor could be involved in modulating differentiation and maintaining homeostasis of epithelial cells. The comparable expression level in fetal lung and kidney with adult tissues suggests a possible role in embryonic development and maturation of these organs. This retinoic acid-inducible GPCR provide evidence for a possible interaction between retinoid and G-protein signaling pathways.

Tissue specificity

Expressed at high level in fetal and adult lung tissues. Constitutively expressed in fetal kidney and adult placenta, kidney, prostate, testis, ovary, small intestine, colon, stomach, and spinal chord at low to moderate levels. Not detectable in fetal heart, brain, and liver and adult heart, brain, liver, skeletal muscle, pancreas, spleen, thymus, and peripheral leukocytes. According to PubMed:10783259, expressed at low but detectable level in pancreas and heart.

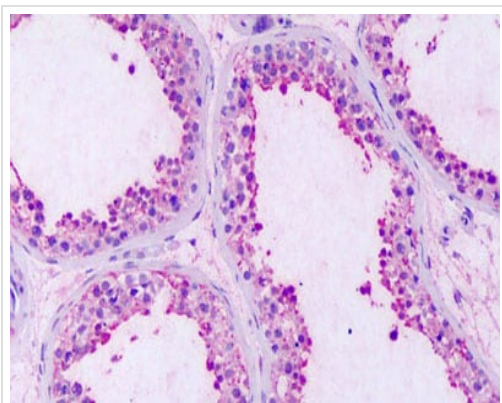
Sequence similarities

Belongs to the G-protein coupled receptor 3 family.

Cellular localization

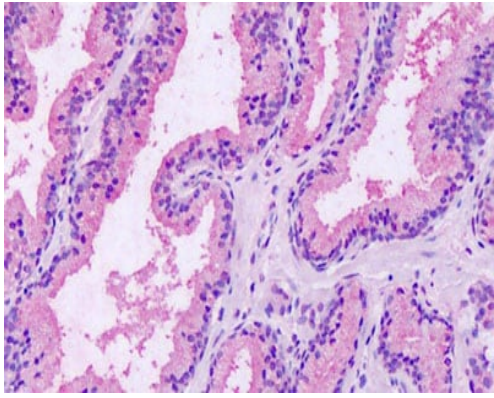
Cell membrane. Cytoplasmic vesicle membrane. Localized in the plasma membrane and perinuclear vesicles.

Images



Immunohistochemical analysis of formalin-fixed, paraffin-embedded Human testis tissue labeling GPRC5A with ab188905 at 36 µg/ml.

Immunohistochemistry (Formalin/PFA-fixed paraffin-embedded sections) - Anti-GPRC5A antibody - Extracellular domain (ab188905)



Immunohistochemical analysis of formalin-fixed, paraffin-embedded Human prostate tissue labeling GPRC5A with ab188905 at 36 µg/ml.

Immunohistochemistry (Formalin/PFA-fixed paraffin-embedded sections) - Anti-GPRC5A antibody - Extracellular domain (ab188905)

Please note: All products are "FOR RESEARCH USE ONLY. NOT FOR USE IN DIAGNOSTIC PROCEDURES"

Our Abpromise to you: Quality guaranteed and expert technical support

- Replacement or refund for products not performing as stated on the datasheet
- Valid for 12 months from date of delivery
- Response to your inquiry within 24 hours
- We provide support in Chinese, English, French, German, Japanese and Spanish
- Extensive multi-media technical resources to help you
- We investigate all quality concerns to ensure our products perform to the highest standards

If the product does not perform as described on this datasheet, we will offer a refund or replacement. For full details of the Abpromise, please visit <https://www.abcam.com/abpromise> or contact our technical team.

Terms and conditions

- Guarantee only valid for products bought direct from Abcam or one of our authorized distributors