

Product datasheet

Anti-GRAF antibody ab226177

2 Images

Overview

Product name	Anti-GRAF antibody
Description	Rabbit polyclonal to GRAF
Host species	Rabbit
Tested applications	Suitable for: WB, IP
Species reactivity	Reacts with: Human Predicted to work with: Chimpanzee, Cynomolgus monkey, Rhesus monkey, Gorilla, Orangutan



Immunogen	Synthetic peptide within Human GRAF aa 611-661. The exact sequence is proprietary. (NP_055886.1). Database link: Q9UNA1
------------------	-----------------------------------------------------------------------------------------------------------------------------------------------

Positive control	WB: HeLa, HEK-293T and Jurkat whole cell lysates. IP: Jurkat whole cell lysate.
-------------------------	---------------------------------------------------------------------------------

General notes	<p>The Life Science industry has been in the grips of a reproducibility crisis for a number of years. Abcam is leading the way in addressing this with our range of recombinant monoclonal antibodies and knockout edited cell lines for gold-standard validation. Please check that this product meets your needs before purchasing.</p> <p>If you have any questions, special requirements or concerns, please send us an inquiry and/or contact our Support team ahead of purchase. Recommended alternatives for this product can be found below, along with publications, customer reviews and Q&As</p>
----------------------	-----------------------------------------------------------------------------------------------------------------------------------------------------------------------------------------------------------------------------------------------------------------------------------------------------------------------------------------------------------------------------------------------------------------------------------------------------------------------------------------------------------------------------------------------------------------------------------------------------------------

Properties

Form	Liquid
Storage instructions	Shipped at 4°C. Store at +4°C short term (1-2 weeks). Upon delivery aliquot. Store at -20°C long term. Avoid freeze / thaw cycle.
Storage buffer	pH: 7 Preservative: 0.09% Sodium azide Constituent: Tris citrate/phosphate
	pH 7 to 8
Purity	Immunogen affinity purified
Purification notes	ab226177 was affinity purified using an epitope specific to GRAF immobilized on solid support.

Clonality	Polyclonal
Isotype	IgG

Applications

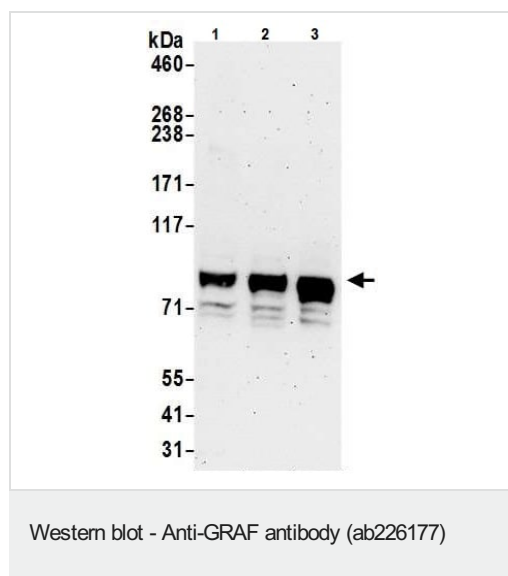
The Abpromise guarantee Our **Abpromise guarantee** covers the use of ab226177 in the following tested applications. The application notes include recommended starting dilutions; optimal dilutions/concentrations should be determined by the end user.

Application	Abreviews	Notes
WB		1/2000 - 1/10000. Predicted molecular weight: 86,92 kDa.
IP		Use at 2-10 µg/mg of lysate.

Target

Function	GTPase-activating protein for RHOA and CDC42.
Involvement in disease	Defects in ARHGAP26 are a cause of juvenile myelomonocytic leukemia (JMML) [MIM:607785]. JMML is a pediatric myelodysplastic syndrome that constitutes approximately 30% of childhood cases of myelodysplastic syndrome (MDS) and 2% of leukemia. Chromosomal translocation t(5;11)(q31;q23) with MLL has been found in a JMML patient.
Sequence similarities	Contains 1 PH domain. Contains 1 Rho-GAP domain. Contains 1 SH3 domain.
Cellular localization	Cell junction > focal adhesion. Cytoplasm > cytoskeleton. Colocalizes with actin stress fibers and cortical actin structures.

Images



All lanes : Anti-GRAF antibody (ab226177) at 0.1 µg/ml

Lane 1 : HeLa (human epithelial cell line from cervix adenocarcinoma) whole cell lysate

Lane 2 : HEK-293T (human epithelial cell line from embryonic kidney transformed with large T antigen) whole cell lysate

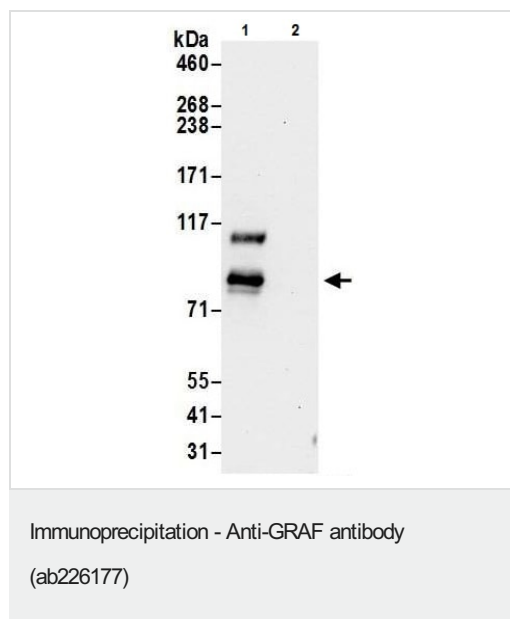
Lane 3 : Jurkat (human T cell leukemia cell line from peripheral blood) whole cell lysate

Lysates/proteins at 50 µg per lane.

Developed using the ECL technique.

Predicted band size: 86,92 kDa

Exposure time: 30 seconds



GRAF was immunoprecipitated from Jurkat (human T cell leukemia cell line from peripheral blood) whole cell lysate (1 mg for IP, 20% of IP loaded) with ab226177 at 6 µg per reaction. Western blot was performed from the immunoprecipitate using ab226177 at 0.4 µg/ml.

Lane 1: ab226177 IP in Jurkat whole cell lysate.

Lane 2: Control IgG IP in Jurkat whole cell lysate.

Detection: Chemiluminescence with exposure time of 3 minutes.

Please note: All products are "FOR RESEARCH USE ONLY. NOT FOR USE IN DIAGNOSTIC PROCEDURES"

Our Abpromise to you: Quality guaranteed and expert technical support

- Replacement or refund for products not performing as stated on the datasheet
- Valid for 12 months from date of delivery
- Response to your inquiry within 24 hours
- We provide support in Chinese, English, French, German, Japanese and Spanish
- Extensive multi-media technical resources to help you
- We investigate all quality concerns to ensure our products perform to the highest standards

If the product does not perform as described on this datasheet, we will offer a refund or replacement. For full details of the Abpromise, please visit <https://www.abcam.com/abpromise> or contact our technical team.

Terms and conditions

- Guarantee only valid for products bought direct from Abcam or one of our authorized distributors