


## Product datasheet

### Anti-Granzyme B antibody ab4059

★★★★★ [21 Abreviews](#) [146 References](#) [2 Images](#)

#### Overview

<b>Product name</b>	Anti-Granzyme B antibody
<b>Description</b>	Rabbit polyclonal to Granzyme B
<b>Host species</b>	Rabbit
<b>Specificity</b>	The immunogen used for this product shares 94% homology with Granzyme H. Cross-reactivity with this protein has not been confirmed experimentally.
<b>Tested applications</b>	<b>Suitable for:</b> IHC-P
<b>Species reactivity</b>	<b>Reacts with:</b> Human <b>Predicted to work with:</b> Mouse, Rat, Pig, Common marmoset 
<b>Immunogen</b>	Synthetic peptide. This information is proprietary to Abcam and/or its suppliers.
<b>General notes</b>	<p><b>This product is FOR RESEARCH USE ONLY. For commercial use, please contact <a href="mailto:partnerships@abcam.com">partnerships@abcam.com</a>.</b></p> <p>The Life Science industry has been in the grips of a reproducibility crisis for a number of years. Abcam is leading the way in addressing this with our range of recombinant monoclonal antibodies and knockout edited cell lines for gold-standard validation. Please check that this product meets your needs before purchasing.</p> <p>If you have any questions, special requirements or concerns, please send us an inquiry and/or contact our Support team ahead of purchase. Recommended alternatives for this product can be found below, along with publications, customer reviews and Q&amp;As</p>

#### Properties

<b>Form</b>	Liquid
<b>Storage instructions</b>	Shipped at 4°C. Upon delivery aliquot and store at -20°C. Avoid freeze / thaw cycles.
<b>Storage buffer</b>	pH: 7.60 Preservative: 0.1% Sodium azide Constituents: PBS, 1% BSA
<b>Purity</b>	Immunogen affinity purified
<b>Clonality</b>	Polyclonal
<b>Isotype</b>	IgG

## Applications

### The Abpromise guarantee

Our **Abpromise guarantee** covers the use of ab4059 in the following tested applications.

The application notes include recommended starting dilutions; optimal dilutions/concentrations should be determined by the end user.

Application	Abreviews	Notes
IHC-P	★★★★★ (20)	1/100. Perform heat mediated antigen retrieval before commencing with IHC staining protocol.

## Target

### Function

This enzyme is necessary for target cell lysis in cell-mediated immune responses. It cleaves after Asp. Seems to be linked to an activation cascade of caspases (aspartate-specific cysteine proteases) responsible for apoptosis execution. Cleaves caspase-3, -7, -9 and 10 to give rise to active enzymes mediating apoptosis.

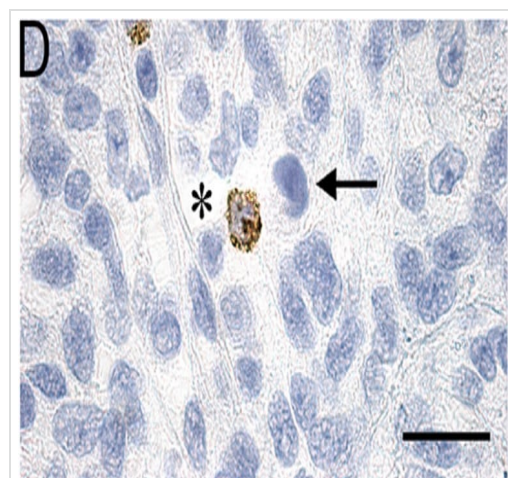
### Sequence similarities

Belongs to the peptidase S1 family. Granzyme subfamily.  
Contains 1 peptidase S1 domain.

### Cellular localization

Cytoplasmic granule. Cytoplasmic granules of cytolytic T-lymphocytes and natural killer cells.

## Images

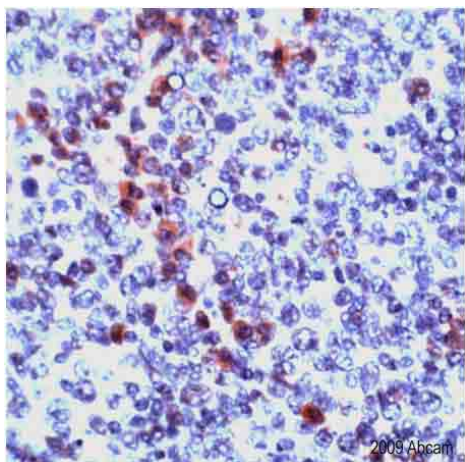


### Cytotoxic effector cells and regulatory T cells in human glioblastoma xenograft growing in immunocompetent rats.

Granzyme B-positive cytotoxic cells (ab4059 at a 1/75 dilution) in a GBM xenograft with rejection. Asterisks mark tissue lysed by effector cells.

Immunohistochemistry (Formalin/PFA-fixed paraffin-embedded sections) - Anti-Granzyme B antibody (ab4059)

Huszthy et al PLoS One. 2015 Aug 20;10(8):e0136089. doi: 10.1371/journal.pone.0136089. eCollection 2015. Fig 5. Reproduced under the Creative Commons license <http://creativecommons.org/licenses/by/4.0/>



Human tonsil tissue stained with anti-Granzyme B antibody (ab4059).

Immunohistochemistry (Formalin/PFA-fixed paraffin-embedded sections) - Anti-Granzyme B antibody (ab4059)

**Please note:** All products are "FOR RESEARCH USE ONLY. NOT FOR USE IN DIAGNOSTIC PROCEDURES"

### Our Abpromise to you: Quality guaranteed and expert technical support

- Replacement or refund for products not performing as stated on the datasheet
- Valid for 12 months from date of delivery
- Response to your inquiry within 24 hours
- We provide support in Chinese, English, French, German, Japanese and Spanish
- Extensive multi-media technical resources to help you
- We investigate all quality concerns to ensure our products perform to the highest standards

If the product does not perform as described on this datasheet, we will offer a refund or replacement. For full details of the Abpromise, please visit <https://www.abcam.com/abpromise> or contact our technical team.

### Terms and conditions

- Guarantee only valid for products bought direct from Abcam or one of our authorized distributors