

Product datasheet

Anti-Granzyme K antibody [EPR24601-56] ab288726

Recombinant RabMAb

[3 Images](#)

Overview

Product name	Anti-Granzyme K antibody [EPR24601-56]
Description	Rabbit monoclonal [EPR24601-56] to Granzyme K
Host species	Rabbit
Tested applications	Suitable for: Flow Cyt (Intra) Unsuitable for: IHC-P,IP or WB
Species reactivity	Reacts with: Human
Immunogen	Recombinant fragment. This information is proprietary to Abcam and/or its suppliers.
Positive control	Flow cyt: Human peripheral blood mononuclear cells (PBMC).
General notes	<p>This product is a recombinant monoclonal antibody, which offers several advantages including:</p> <ul style="list-style-type: none">- High batch-to-batch consistency and reproducibility- Improved sensitivity and specificity- Long-term security of supply- Animal-free production <p>For more information see here.</p> <p>Our RabMAb[®] technology is a patented hybridoma-based technology for making rabbit monoclonal antibodies. For details on our patents, please refer to RabMAb[®] patents.</p>

Properties

Form	Liquid
Storage instructions	Shipped at 4°C. Store at +4°C short term (1-2 weeks). Upon delivery aliquot. Store at -20°C long term. Avoid freeze / thaw cycle.
Storage buffer	pH: 7.20 Preservative: 0.01% Sodium azide Constituents: 59.94% PBS, 40% Glycerol (glycerin, glycerine), 0.05% BSA
Purity	Protein A purified
Clonality	Monoclonal
Clone number	EPR24601-56
Isotype	IgG

Applications

The Abpromise guarantee

Our **Abpromise guarantee** covers the use of ab288726 in the following tested applications.

The application notes include recommended starting dilutions; optimal dilutions/concentrations should be determined by the end user.

Application	Abreviews	Notes
Flow Cyt (Intra)		1/5000.

Application notes

Is unsuitable for IHC-P,IP or WB.

Target

Tissue specificity

Expressed in lung, spleen, thymus and peripheral blood leukocytes.

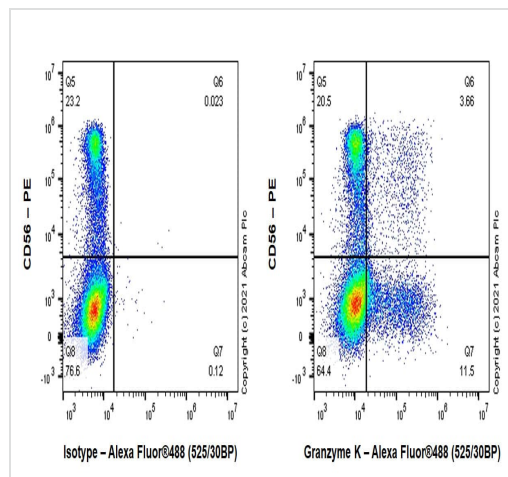
Sequence similarities

Belongs to the peptidase S1 family. Granzyme subfamily.
Contains 1 peptidase S1 domain.

Cellular localization

Secreted. Cytoplasmic granule.

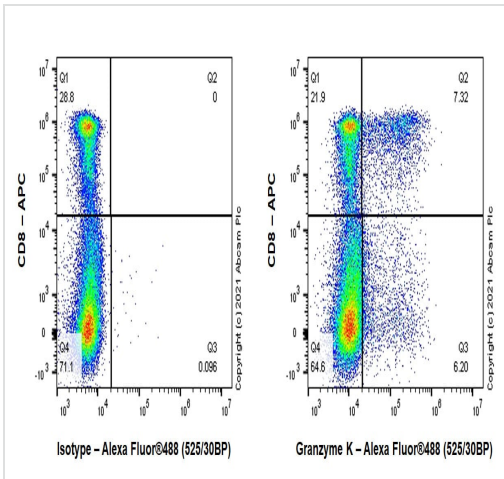
Images



Flow cytometric analysis of 4% paraformaldehyde-fixed, 0.1% saponin-premeabilized Human peripheral blood mononuclear cells labeling Granzyme K with ab288726 at 1/5000 dilution (Right) compared with Rabbit monoclonal IgG (**ab172730**) isotype control (Left). Goat Anti-Rabbit IgG (Alexa Fluor[®] 488, **ab150081**) at 1/2000 dilution was used as secondary antibody.

Cells were stained with anti-CD56 conjugated to PE. Fixed with 4% PFA for 10 min followed by intracellularly staining with rabbit IgG or ab288726.

Flow Cytometry (Intracellular) - Anti-Granzyme K antibody [EPR24601-56] (ab288726)



Flow Cytometry (Intracellular) - Anti-Granzyme K antibody [EPR24601-56] (ab288726)

Flow cytometric analysis of 4% paraformaldehyde-fixed, 0.1% saponin-premeabilized Human peripheral blood mononuclear cells labeling Granzyme K with ab288726 at 1/5000 dilution (Right) compared with Rabbit monoclonal IgG (**ab172730**) isotype control (Left). Goat Anti-Rabbit IgG (Alexa Fluor® 488, **ab150081**) at 1/2000 dilution was used as secondary antibody.

Cells were stained with anti-CD8 conjugated to APC. Fixed with 4% PFA for 10 min followed by intracellularly staining with rabbit IgG or ab288726.

Why choose a recombinant antibody?

 <p>Research with confidence Consistent and reproducible results</p>	 <p>Long-term and scalable supply Recombinant technology</p>
 <p>Success from the first experiment Confirmed specificity</p>	 <p>Ethical standards compliant Animal-free production</p>

Anti-Granzyme K antibody [EPR24601-56] (ab288726)

Please note: All products are "FOR RESEARCH USE ONLY. NOT FOR USE IN DIAGNOSTIC PROCEDURES"

Our Abpromise to you: Quality guaranteed and expert technical support

- Replacement or refund for products not performing as stated on the datasheet
- Valid for 12 months from date of delivery
- Response to your inquiry within 24 hours

- We provide support in Chinese, English, French, German, Japanese and Spanish
- Extensive multi-media technical resources to help you
- We investigate all quality concerns to ensure our products perform to the highest standards

If the product does not perform as described on this datasheet, we will offer a refund or replacement. For full details of the Abpromise, please visit <https://www.abcam.com/abpromise> or contact our technical team.

Terms and conditions

- Guarantee only valid for products bought direct from Abcam or one of our authorized distributors