

Anti-GRHL2 antibody ab88631

[2 References](#) [3 Images](#)

Overview

Product name	Anti-GRHL2 antibody
Description	Mouse polyclonal to GRHL2
Host species	Mouse
Tested applications	Suitable for: WB, ICC/IF
Species reactivity	Reacts with: Human
Immunogen	Recombinant full length protein within Human GRHL2. The exact immunogen sequence used to generate this antibody is proprietary information. If additional detail on the immunogen is needed to determine the suitability of the antibody for your needs, please contact our Scientific Support team to discuss your requirements.
Positive control	A431 cell lysate Transfected 293T cell lysate HeLa cells
General notes	<p>The Life Science industry has been in the grips of a reproducibility crisis for a number of years. Abcam is leading the way in addressing this with our range of recombinant monoclonal antibodies and knockout edited cell lines for gold-standard validation. Please check that this product meets your needs before purchasing.</p> <p>If you have any questions, special requirements or concerns, please send us an inquiry and/or contact our Support team ahead of purchase. Recommended alternatives for this product can be found below, along with publications, customer reviews and Q&As</p>

Properties

Form	Liquid
Storage instructions	Shipped at 4°C. Upon delivery aliquot and store at -20°C or -80°C. Avoid repeated freeze / thaw cycles.
Storage buffer	pH: 7.40 Constituent: 100% PBS
Purity	Protein A purified
Clonality	Polyclonal
Isotype	IgG

Applications

The Abpromise guarantee

Our **Abpromise guarantee** covers the use of ab88631 in the following tested applications.

The application notes include recommended starting dilutions; optimal dilutions/concentrations should be determined by the end user.

Application	Abreviews	Notes
WB		Use a concentration of 1 µg/ml. Predicted molecular weight: 71 kDa.
ICC/IF		Use a concentration of 10 µg/ml.

Target

Function

May function as a transcription factor.

Tissue specificity

Highly expressed in placenta, prostate, brain and kidney. Lower-level expression in a variety of epithelial tissues such as thymus, kidney, lung, salivary gland, mammary gland and digestive tract. Expressed in the cochlear.

Involvement in disease

Defects in GRHL2 are the cause of deafness autosomal dominant type 28 (DFNA28) [MIM:608641]. DFNA28 is a form of sensorineural hearing loss. Sensorineural deafness results from damage to the neural receptors of the inner ear, the nerve pathways to the brain, or the area of the brain that receives sound information. DFNA28 is characterized by mild to moderate hearing loss across most frequencies that progressed to severe loss in the higher frequencies by the fifth decade. Age at onset varied, with the earliest case documented at 7 years of age.

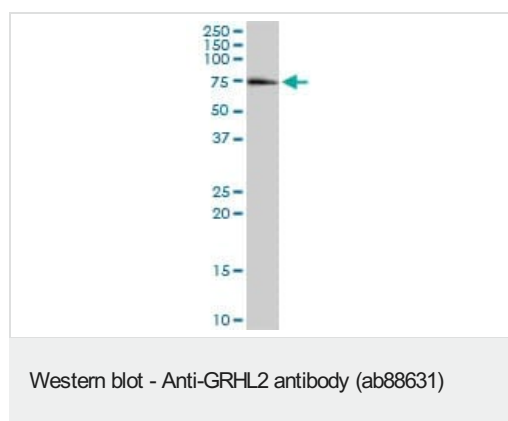
Sequence similarities

Belongs to the grh/CP2 family. Rainyhead subfamily.

Cellular localization

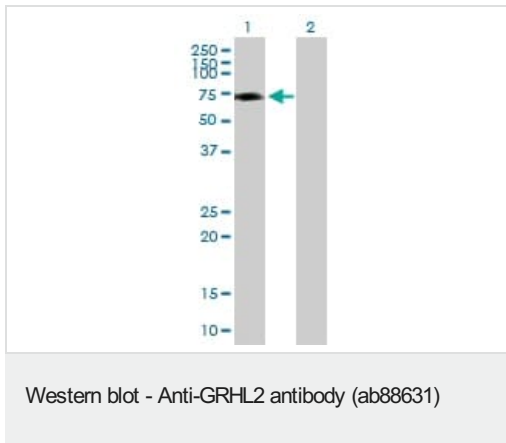
Nucleus.

Images



Anti-GRHL2 antibody (ab88631) at 1 µg/ml + A431 cell lysate at 50 µg/ml

Predicted band size: 71 kDa



All lanes : Anti-GRHL2 antibody (ab88631) at 1 µg/ml

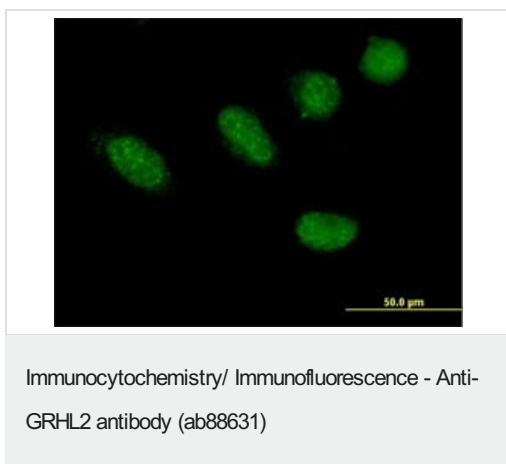
Lane 1 : GRHL2-transfected 293T cell lysate

Lane 2 : Non-transfected 293T cell lysate

Lysates/proteins at 25 µg per lane.

Predicted band size: 71 kDa

Observed band size: 69 kDa



Immunofluorescence analysis of HeLa cells using ab88631 at a dilution of 10 µg/ml followed by fluorescein conjugated secondary antibody.

Please note: All products are "FOR RESEARCH USE ONLY. NOT FOR USE IN DIAGNOSTIC PROCEDURES"

Our Abpromise to you: Quality guaranteed and expert technical support

- Replacement or refund for products not performing as stated on the datasheet
- Valid for 12 months from date of delivery
- Response to your inquiry within 24 hours
- We provide support in Chinese, English, French, German, Japanese and Spanish
- Extensive multi-media technical resources to help you
- We investigate all quality concerns to ensure our products perform to the highest standards

If the product does not perform as described on this datasheet, we will offer a refund or replacement. For full details of the Abpromise, please visit <https://www.abcam.com/abpromise> or contact our technical team.

Terms and conditions

- Guarantee only valid for products bought direct from Abcam or one of our authorized distributors