



## Product datasheet

### Anti-GRHL3 antibody ab221058

5 Images

#### Overview

<b>Product name</b>	Anti-GRHL3 antibody
<b>Description</b>	Rabbit polyclonal to GRHL3
<b>Host species</b>	Rabbit
<b>Tested applications</b>	<b>Suitable for:</b> IHC-P, ICC/IF
<b>Species reactivity</b>	<b>Reacts with:</b> Human
<b>Immunogen</b>	Recombinant fragment corresponding to Human GRHL3 aa 50-150. Database link: <a href="#">Q8TE85</a>
	<div>  <a href="#">Run BLAST with</a>  <a href="#">Run BLAST with</a> </div>
<b>Positive control</b>	IHC-P: Human urinary bladder, skin and oral mucosa tissue. ICC: MCF7 whole cells.
<b>General notes</b>	<p>The Life Science industry has been in the grips of a reproducibility crisis for a number of years. Abcam is leading the way in addressing this with our range of recombinant monoclonal antibodies and knockout edited cell lines for gold-standard validation. Please check that this product meets your needs before purchasing.</p> <p>If you have any questions, special requirements or concerns, please send us an inquiry and/or contact our Support team ahead of purchase. Recommended alternatives for this product can be found below, along with publications, customer reviews and Q&amp;As</p>

#### Properties

<b>Form</b>	Liquid
<b>Storage instructions</b>	Shipped at 4°C. Store at +4°C short term (1-2 weeks). Upon delivery aliquot. Store at -20°C long term. Avoid freeze / thaw cycle.
<b>Storage buffer</b>	pH: 7.20 Preservative: 0.02% Sodium azide Constituents: 40% Glycerol (glycerin, glycerine), 59% PBS
<b>Purity</b>	Immunogen affinity purified
<b>Clonality</b>	Polyclonal
<b>Isotype</b>	IgG

#### Applications

## The Abpromise guarantee

Our **Abpromise guarantee** covers the use of ab221058 in the following tested applications.

The application notes include recommended starting dilutions; optimal dilutions/concentrations should be determined by the end user.

Application	Abreviews	Notes
IHC-P		1/1000 - 1/2500. Perform heat mediated antigen retrieval with citrate buffer pH 6 before commencing with IHC staining protocol.
ICC/IF		Use a concentration of 0.25 - 2 µg/ml. Fixation/Permeabilization: PFA/Triton X-100.

## Target

### Function

May function as a transcription factor.

### Tissue specificity

Expressed in brain, colon, pancreas, placenta and kidney. Isoform 1 is expressed in lung and tonsil. Isoform 2 is prostate-specific.

### Sequence similarities

Belongs to the grh/CP2 family. Grainyhead subfamily.

### Cellular localization

Nucleus.

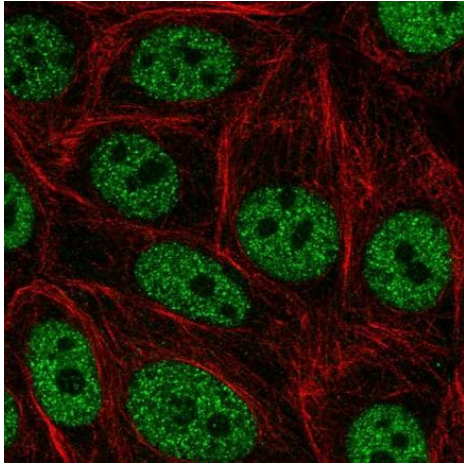
## Images



Immunohistochemical analysis of human urinary bladder tissue labeling GRHL3 in the nucleus of squamous epithelial cells with ab221058 at a 1/1000 dilution.

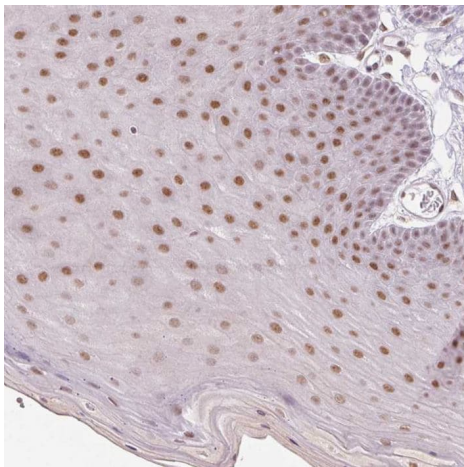
Performed heat mediated antigen retrieval with citrate buffer pH 6 before commencing with IHC staining protocol.

Immunohistochemistry (Formalin/PFA-fixed paraffin-embedded sections) - Anti-GRHL3 antibody (ab221058)



Immunocytochemistry/ Immunofluorescence - Anti-GRHL3 antibody (ab221058)

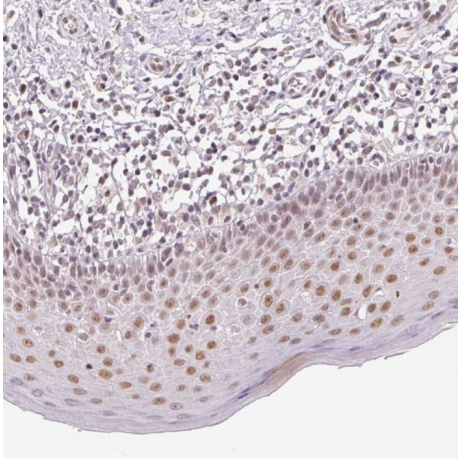
Immunocytochemical analysis of MCF7 (Human breast adenocarcinoma cell line) whole cells labeling GRHL3 (green) in the nucleoplasm with ab221058 at 2 µg/mL.



Immunohistochemistry (Formalin/PFA-fixed paraffin-embedded sections) - Anti-GRHL3 antibody (ab221058)

Immunohistochemical analysis of human skin tissue labeling GRHL3 in the nucleus of squamous epithelial cells with ab221058 at a 1/1000 dilution.

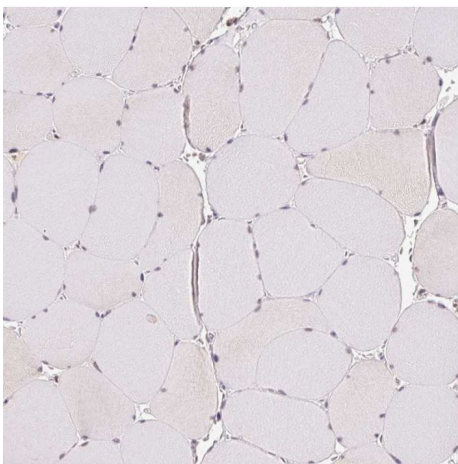
Performed heat mediated antigen retrieval with citrate buffer pH 6 before commencing with IHC staining protocol.



Immunohistochemistry (Formalin/PFA-fixed paraffin-embedded sections) - Anti-GRHL3 antibody (ab221058)

Immunohistochemical analysis of human oral mucosa tissue labeling GRHL3 in the nucleus of squamous epithelial cells with ab221058 at a 1/1000 dilution.

Performed heat mediated antigen retrieval with citrate buffer pH 6 before commencing with IHC staining protocol.



Immunohistochemistry (Formalin/PFA-fixed paraffin-embedded sections) - Anti-GRHL3 antibody (ab221058)

Immunohistochemical analysis of human skeletal muscle tissue labeling GRHL3 with ab221058 at a 1/1000 dilution. No positivity as expected.

Performed heat mediated antigen retrieval with citrate buffer pH 6 before commencing with IHC staining protocol.

**Please note:** All products are "FOR RESEARCH USE ONLY. NOT FOR USE IN DIAGNOSTIC PROCEDURES"

### Our Abpromise to you: Quality guaranteed and expert technical support

- Replacement or refund for products not performing as stated on the datasheet

- Valid for 12 months from date of delivery
- Response to your inquiry within 24 hours
- We provide support in Chinese, English, French, German, Japanese and Spanish
- Extensive multi-media technical resources to help you
- We investigate all quality concerns to ensure our products perform to the highest standards

If the product does not perform as described on this datasheet, we will offer a refund or replacement. For full details of the Abpromise, please visit <https://www.abcam.com/abpromise> or contact our technical team.

#### **Terms and conditions**

---

- Guarantee only valid for products bought direct from Abcam or one of our authorized distributors