

Product datasheet

Anti-GRINL1A antibody ab113427

[1 Image](#)

Overview

Product name	Anti-GRINL1A antibody
Description	Rabbit polyclonal to GRINL1A
Host species	Rabbit
Tested applications	Suitable for: WB
Species reactivity	Reacts with: Rat
Immunogen	18 amino acid synthetic peptide near the C-terminus of Human GRINL1A (NP_001018110).
Positive control	WB: Rat Kidney
General notes	<p>The Life Science industry has been in the grips of a reproducibility crisis for a number of years. Abcam is leading the way in addressing this with our range of recombinant monoclonal antibodies and knockout edited cell lines for gold-standard validation. Please check that this product meets your needs before purchasing.</p> <p>If you have any questions, special requirements or concerns, please send us an inquiry and/or contact our Support team ahead of purchase. Recommended alternatives for this product can be found below, along with publications, customer reviews and Q&As</p>

Properties

Form	Liquid
Storage instructions	Shipped at 4°C. Store at 4°C (stable for up to 12 months).
Storage buffer	pH: 7.2 Preservative: 0.02% Sodium azide Constituent: 99% PBS
Purity	Immunogen affinity purified
Clonality	Polyclonal
Isotype	IgG

Applications

The Abpromise guarantee Our **Abpromise guarantee** covers the use of ab113427 in the following tested applications. The application notes include recommended starting dilutions; optimal dilutions/concentrations should be determined by the end user.

Application	Abreviews	Notes
WB		Use a concentration of 1 - 2 µg/ml. Predicted molecular weight: 42 kDa.

Target

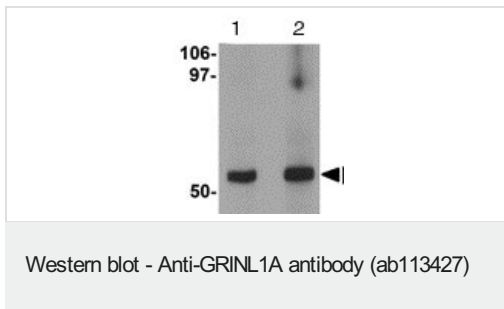
Relevance

GRINL1A is part of a complex transcript unit that includes the gene for GRINL1A combined protein (Gcom1). Transcription of this gene occurs at a downstream promoter, with at least three different alternatively spliced variants, grouped together as Gdown for GRINL1A downstream transcripts. The Gcom1 gene uses an upstream promoter for transcription and also has multiple alternatively spliced variants.

Cellular localization

Isoform 1: Nucleus.

Images



Lane 1 : Anti-GRINL1A antibody (ab113427) at 1 µg/ml

Lane 2 : Anti-GRINL1A antibody (ab113427) at 2 µg/ml

All lanes : Rat Kidney lysate

Lysates/proteins at 15 µg per lane.

Predicted band size: 42 kDa

Please note: All products are "FOR RESEARCH USE ONLY. NOT FOR USE IN DIAGNOSTIC PROCEDURES"

Our Abpromise to you: Quality guaranteed and expert technical support

- Replacement or refund for products not performing as stated on the datasheet
- Valid for 12 months from date of delivery
- Response to your inquiry within 24 hours
- We provide support in Chinese, English, French, German, Japanese and Spanish
- Extensive multi-media technical resources to help you
- We investigate all quality concerns to ensure our products perform to the highest standards

If the product does not perform as described on this datasheet, we will offer a refund or replacement. For full details of the Abpromise, please visit <https://www.abcam.com/abpromise> or contact our technical team.

Terms and conditions

- Guarantee only valid for products bought direct from Abcam or one of our authorized distributors