

### Anti-GRK1 antibody [D11] ab2776

[5 References](#) [4 Images](#)

#### Overview

<b>Product name</b>	Anti-GRK1 antibody [D11]
<b>Description</b>	Mouse monoclonal [D11] to GRK1
<b>Host species</b>	Mouse
<b>Specificity</b>	Detects G-protein-associated rhodopsin kinase 1a/b (GRK1a/b) from human and bovine tissues. This antibody does not cross-react with other G protein-coupled kinases.
<b>Tested applications</b>	<b>Suitable for:</b> ICC/IF
<b>Species reactivity</b>	<b>Reacts with:</b> Mouse, Cow, Human
<b>Immunogen</b>	Full length native protein (purified) corresponding to Human GRK1.
<b>Epitope</b>	This antibody recognizes an N-terminal epitope of human GRK1 which is conserved in both GRK1a and GRK1b.
<b>General notes</b>	<p>The Life Science industry has been in the grips of a reproducibility crisis for a number of years. Abcam is leading the way in addressing this with our range of recombinant monoclonal antibodies and knockout edited cell lines for gold-standard validation. Please check that this product meets your needs before purchasing.</p> <p>If you have any questions, special requirements or concerns, please send us an inquiry and/or contact our Support team ahead of purchase. Recommended alternatives for this product can be found below, along with publications, customer reviews and Q&amp;As</p>

#### Properties

<b>Form</b>	Liquid
<b>Storage instructions</b>	Shipped at 4°C. Store at +4°C short term (1-2 weeks). Upon delivery aliquot. Store at -20°C or -80°C. Avoid freeze / thaw cycle.
<b>Storage buffer</b>	Preservative: 0.05% Sodium azide
<b>Purity</b>	Protein G purified
<b>Primary antibody notes</b>	The sensation of sight is the result of a cascade of events starting with the interaction of photoactivated rhodopsin with a protein called transducin. Rhodopsin kinase is a G-protein-coupled Ser/Thr kinase, also known as GRK1, which is a key element in the regulation of this cascade. Following phosphorylation by GRK1, arrestin is recruited to phospho-rhodopsin quenching its phototransductive activity by preventing further interaction with transducin. By breaking the cycle of phototransduction, GRK1 plays an important role in the restoration of the

system for subsequent visual events.

<b>Clonality</b>	Monoclonal
<b>Clone number</b>	D11
<b>Isotype</b>	IgG

## Applications

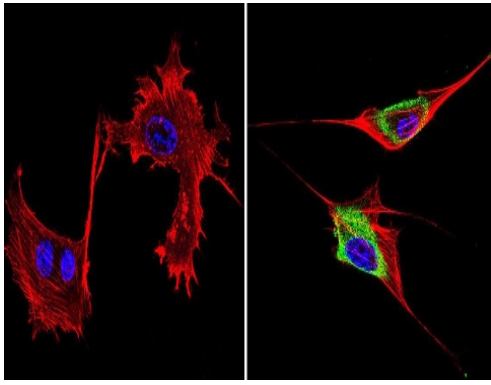
**The Abpromise guarantee** Our **Abpromise guarantee** covers the use of ab2776 in the following tested applications.  
The application notes include recommended starting dilutions; optimal dilutions/concentrations should be determined by the end user.

Application	Abreviews	Notes
ICC/IF		1/20 - 1/200.

## Target

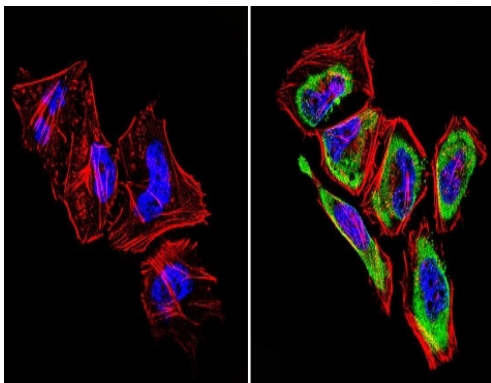
<b>Function</b>	Retina-specific kinase involved in the signal turnoff via phosphorylation of rhodopsin (RHO), the G protein- coupled receptor that initiates the phototransduction cascade. This rapid desensitization is essential for scotopic vision and permits rapid adaptation to changes in illumination.
<b>Tissue specificity</b>	Retinal-specific. Expressed in rods and cones cells.
<b>Involvement in disease</b>	Night blindness, congenital stationary, Oguchi type 2
<b>Sequence similarities</b>	Belongs to the protein kinase superfamily. AGC Ser/Thr protein kinase family. GPRK subfamily. Contains 1 AGC-kinase C-terminal domain. Contains 1 protein kinase domain. Contains 1 RGS domain.
<b>Post-translational modifications</b>	Autophosphorylated, Ser-21 is a minor site of autophosphorylation compared to Ser-491 and Thr-492 (By similarity). Phosphorylation at Ser-21 is regulated by light and activated by cAMP. Farnesylation is required for full activity.
<b>Cellular localization</b>	Membrane.

## Images



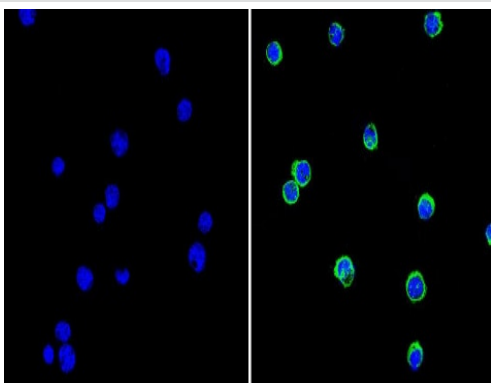
Immunocytochemistry/ Immunofluorescence - Anti-GRK1 antibody [D11] (ab2776)

Immunocytochemistry/Immunofluorescence analysis of GRK1 (green) in murine cells. Formalin-fixed cells were permeabilized with 0.1% Triton X-100 in TBS for 5-10 minutes at room temperature and blocked with 3% BSA-PBS for 30 minutes at room temperature. Cells were incubated with ab2776 (1:200) overnight in a humidified chamber. Cells were washed with PBST and incubated with a DyLight-conjugated secondary antibody for 45 minutes at room temperature in the dark. F-actin (red) was stained with a fluorescent phalloidin and nuclei (blue) were stained with DAPI. Images were taken at a 60X magnification.



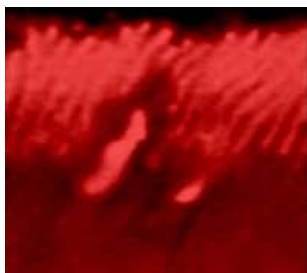
Immunocytochemistry/ Immunofluorescence - Anti-GRK1 antibody [D11] (ab2776)

Immunocytochemistry/Immunofluorescence analysis of GRK1 (green) in HeLa cells. Formalin-fixed cells were permeabilized with 0.1% Triton X-100 in TBS for 5-10 minutes at room temperature and blocked with 3% BSA-PBS for 30 minutes at room temperature. Cells were incubated with ab2776 (1:200) overnight in a humidified chamber. Cells were washed with PBST and incubated with a DyLight-conjugated secondary antibody for 45 minutes at room temperature in the dark. F-actin (red) was stained with a fluorescent phalloidin and nuclei (blue) were stained with DAPI. Images were taken at a 60X magnification.



Immunocytochemistry/ Immunofluorescence - Anti-GRK1 antibody [D11] (ab2776)

Immunocytochemistry/Immunofluorescence analysis of GRK1 (green) in human cells. Formalin-fixed cells were permeabilized with 0.1% Triton X-100 in TBS for 5-10 minutes at room temperature and blocked with 3% BSA-PBS for 30 minutes at room temperature. Cells were incubated with ab2776 (1:20) overnight in a humidified chamber. Cells were washed with PBST and incubated with a DyLight-conjugated secondary antibody for 45 minutes at room temperature in the dark. F-actin (red) was stained with a fluorescent phalloidin and nuclei (blue) were stained with DAPI. Images were taken at a 60X magnification.



Immunolocalization of GRK1 in bovine retina using ab2776.

Immunocytochemistry/ Immunofluorescence - Anti-GRK1 antibody [D11] (ab2776)

**Please note:** All products are "FOR RESEARCH USE ONLY. NOT FOR USE IN DIAGNOSTIC PROCEDURES"

### Our Abpromise to you: Quality guaranteed and expert technical support

---

- Replacement or refund for products not performing as stated on the datasheet
- Valid for 12 months from date of delivery
- Response to your inquiry within 24 hours
- We provide support in Chinese, English, French, German, Japanese and Spanish
- Extensive multi-media technical resources to help you
- We investigate all quality concerns to ensure our products perform to the highest standards

If the product does not perform as described on this datasheet, we will offer a refund or replacement. For full details of the Abpromise, please visit <https://www.abcam.com/abpromise> or contact our technical team.

### Terms and conditions

---

- Guarantee only valid for products bought direct from Abcam or one of our authorized distributors