

Product datasheet

Anti-GRO alpha + GRO gamma + GRO beta antibody [EPR4902] ab124898

Recombinant RabMAb

[1 References](#) [2 Images](#)

Overview

Product name	Anti-GRO alpha + GRO gamma + GRO beta antibody [EPR4902]
Description	Rabbit monoclonal [EPR4902] to CXCL1/GRO alpha + GRO gamma + GRO beta
Host species	Rabbit
Tested applications	Suitable for: WB Unsuitable for: ICC/IF, IHC-P or IP
Species reactivity	Reacts with: Human
Immunogen	Synthetic peptide within Human GRO alpha aa 50-150. The exact sequence is proprietary.
Positive control	Human GRO alpha recombinant protein.
General notes	<p>This product is a recombinant monoclonal antibody, which offers several advantages including:</p> <ul style="list-style-type: none"> - High batch-to-batch consistency and reproducibility - Improved sensitivity and specificity - Long-term security of supply - Animal-free production <p>For more information see here.</p> <p>Our RabMAb[®] technology is a patented hybridoma-based technology for making rabbit monoclonal antibodies. For details on our patents, please refer to RabMAb[®] patents.</p> <p>Mouse, Rat: We have preliminary internal testing data to indicate this antibody may not react with these species. Please contact us for more information.</p>

Properties

Form	Liquid
Storage instructions	Shipped at 4°C. Store at -20°C. Stable for 12 months at -20°C.
Storage buffer	<p>pH: 7.2</p> <p>Preservative: 0.01% Sodium azide</p> <p>Constituents: 0.31% Sodium citrate, 0.175% Sodium chloride, 0.0172% EDTA disodium salt, 59% PBS, 40% Glycerol (glycerin, glycerine), 0.05% BSA</p>
Purity	Protein A purified

Clonality	Monoclonal
Clone number	EPR4902
Isotype	IgG

Applications

The Abpromise guarantee Our **Abpromise guarantee** covers the use of ab124898 in the following tested applications. The application notes include recommended starting dilutions; optimal dilutions/concentrations should be determined by the end user.

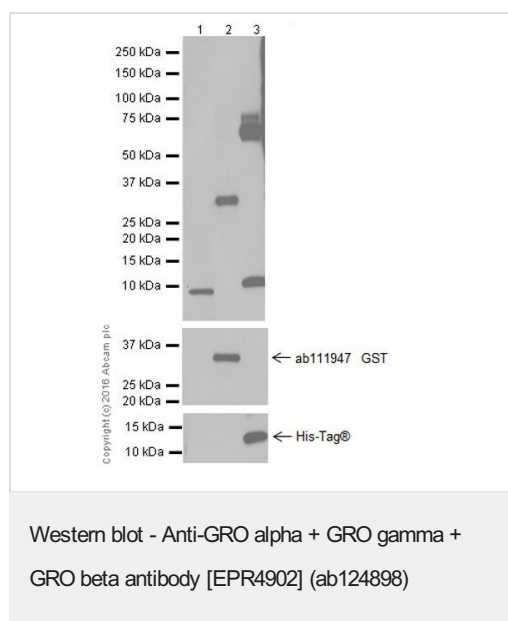
Application	Abreviews	Notes
WB		1/10000 - 1/50000. Detects a band of approximately 8 kDa (predicted molecular weight: 11 kDa).

Application notes Is unsuitable for ICC/IF, IHC-P or IP.

Target

Cellular localization	CXCL1/GRO alpha: Secreted. GRO gamma: Secreted.
------------------------------	---

Images



All lanes : Anti-GRO alpha + GRO gamma + GRO beta antibody
[EPR4902] (ab124898) at 1/2000 dilution

Lane 1 : Human GRO alpha active protein

Lane 2 : Human GRO beta fragment recombinant protein

Lane 3 : Human GRO gamma fragment recombinant protein

Lysates/proteins at 10 µg per lane.

Secondary

All lanes : Goat Anti-Rabbit IgG (H+L), Peroxidase conjugated at 1/100000 dilution

Predicted band size: 11 kDa

Observed band size: 10,36,10 kDa

Exposure time: 3 minutes

Blocking buffer and concentration: 5% NFDM/TBST

Diluting buffer and concentration:5% NFDM/TBST

Human GRO beta fragment protein contain aa35-107 with a GST-Tag. Human GRO gamma fragment recombinant protein contain aa35-107 with a His-Tag.

Why choose α recombinant antibody?



Research with confidence
Consistent and reproducible results



Long-term and scalable supply
Recombinant technology



Success from the first experiment
Confirmed specificity



Ethical standards compliant
Animal-free production

Anti-GRO alpha + GRO gamma + GRO beta antibody [EPR4902] (ab124898)

Please note: All products are "FOR RESEARCH USE ONLY. NOT FOR USE IN DIAGNOSTIC PROCEDURES"

Our Abpromise to you: Quality guaranteed and expert technical support

- Replacement or refund for products not performing as stated on the datasheet
- Valid for 12 months from date of delivery
- Response to your inquiry within 24 hours
- We provide support in Chinese, English, French, German, Japanese and Spanish
- Extensive multi-media technical resources to help you
- We investigate all quality concerns to ensure our products perform to the highest standards

If the product does not perform as described on this datasheet, we will offer a refund or replacement. For full details of the Abpromise, please visit <https://www.abcam.com/abpromise> or contact our technical team.

Terms and conditions

- Guarantee only valid for products bought direct from Abcam or one of our authorized distributors