

Product datasheet

Anti-groEL antibody ab90522

★★★★★ [2 Abreviews](#) [15 References](#) [1 Image](#)

Overview

Product name	Anti-groEL antibody
Description	Rabbit polyclonal to groEL
Host species	Rabbit
Tested applications	Suitable for: WB
Species reactivity	Reacts with: Escherichia coli
Immunogen	Full length protein corresponding to Escherichia coli groEL. Strain K12 Database link: P0A6F5
Positive control	WB: Recombinant groEL protein; E.coli cell lysate.
General notes	<p>The Life Science industry has been in the grips of a reproducibility crisis for a number of years. Abcam is leading the way in addressing this with our range of recombinant monoclonal antibodies and knockout edited cell lines for gold-standard validation. Please check that this product meets your needs before purchasing.</p> <p>If you have any questions, special requirements or concerns, please send us an inquiry and/or contact our Support team ahead of purchase. Recommended alternatives for this product can be found below, along with publications, customer reviews and Q&As</p>

Properties

Form	Liquid
Storage instructions	Shipped at 4°C. Upon delivery aliquot and store at -20°C. Avoid repeated freeze / thaw cycles.
Storage buffer	Preservative: 0.09% Sodium azide Constituents: PBS, 50% Glycerol (glycerin, glycerine)
Purity	Protein A purified
Clonality	Polyclonal
Isotype	IgG

Applications

The Abpromise guarantee Our [Abpromise guarantee](#) covers the use of ab90522 in the following tested applications.
The application notes include recommended starting dilutions; optimal dilutions/concentrations should be determined by the end user.

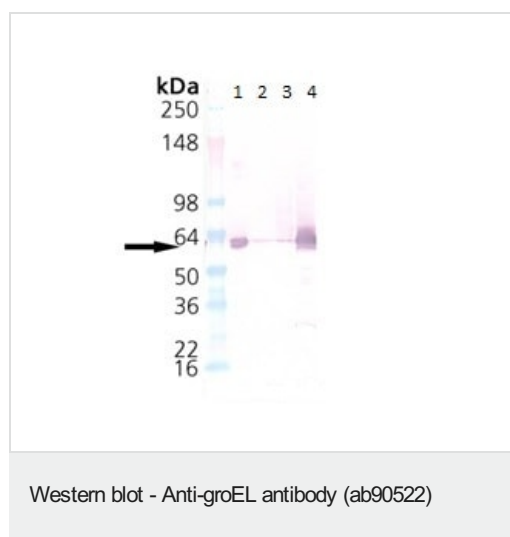
Application	Abreviews	Notes
WB	★★★★★ (2)	1/1000. Predicted molecular weight: 57 kDa.

Target

Relevance The bacterial chaperonin groEL is a double toroidal assembly, which together with the action of the ring-shaped oligomeric cochaperonin, GroES, facilitates protein folding in an ATP dependent manner.

Cellular localization Cytoplasmic

Images



All lanes : Anti-groEL antibody (ab90522) at 1/1000 dilution

Lane 1 : groEL recombinant protein

Lane 2 : Human recombinant HSP60

Lane 3 : Heat Shocked HeLa (human epithelial cell line from cervix adenocarcinoma) cell lysate

Lane 4 : E.coli cell lysate

Predicted band size: 57 kDa

Please note: All products are "FOR RESEARCH USE ONLY. NOT FOR USE IN DIAGNOSTIC PROCEDURES"

Our Abpromise to you: Quality guaranteed and expert technical support

- Replacement or refund for products not performing as stated on the datasheet
- Valid for 12 months from date of delivery
- Response to your inquiry within 24 hours
- We provide support in Chinese, English, French, German, Japanese and Spanish
- Extensive multi-media technical resources to help you
- We investigate all quality concerns to ensure our products perform to the highest standards

If the product does not perform as described on this datasheet, we will offer a refund or replacement. For full details of the Abpromise, please visit <https://www.abcam.com/abpromise> or contact our technical team.

Terms and conditions

- Guarantee only valid for products bought direct from Abcam or one of our authorized distributors