




Product datasheet

Anti-Growth Hormone antibody ab230996

2 Images

Overview

Product name	Anti-Growth Hormone antibody
Description	Rabbit polyclonal to Growth Hormone
Host species	Rabbit
Tested applications	Suitable for: WB
Species reactivity	Reacts with: Rat, Dog Predicted to work with: Mouse, Rabbit, Horse, Guinea pig, Cow, Cat, Pig 
Immunogen	Recombinant full length protein (His-T7-tag) corresponding to Dog Growth Hormone aa 1 to the C-terminus. Full length mature chain, expressed in E.coli. Database link: P33711  Run BLAST with  Run BLAST with
Positive control	WB: Rat cerebellum lysate; Recombinant dog Growth Hormone protein.
General notes	<p>The Life Science industry has been in the grips of a reproducibility crisis for a number of years. Abcam is leading the way in addressing this with our range of recombinant monoclonal antibodies and knockout edited cell lines for gold-standard validation. Please check that this product meets your needs before purchasing.</p> <p>If you have any questions, special requirements or concerns, please send us an inquiry and/or contact our Support team ahead of purchase. Recommended alternatives for this product can be found below, along with publications, customer reviews and Q&As</p>

Properties

Form	Liquid
Storage instructions	Shipped at 4°C. Store at +4°C short term (1-2 weeks). Upon delivery aliquot. Store at -20°C long term. Avoid freeze / thaw cycle.
Storage buffer	pH: 7.40 Preservative: 0.02% Sodium azide Constituents: 44.12% PBS, 55.77% Glycerol (glycerin, glycerine)
Purity	Immunogen affinity purified
Purification notes	ab230996 was purified by antigen-specific affinity chromatography followed by Protein A affinity chromatography.
Clonality	Polyclonal

Isotype

IgG

Applications

The Abpromise guarantee

Our **Abpromise guarantee** covers the use of ab230996 in the following tested applications.

The application notes include recommended starting dilutions; optimal dilutions/concentrations should be determined by the end user.

Application	Abreviews	Notes
WB		Use a concentration of 0.2 - 2 µg/ml. Predicted molecular weight: 24 kDa.

Target

Function

Plays an important role in growth control. Its major role in stimulating body growth is to stimulate the liver and other tissues to secrete IGF-1. It stimulates both the differentiation and proliferation of myoblasts. It also stimulates amino acid uptake and protein synthesis in muscle and other tissues.

Involvement in disease

Defects in GH1 are a cause of growth hormone deficiency isolated type 1A (IGHD1A) [MIM:262400]; also known as pituitary dwarfism I. IGHD1A is an autosomal recessive deficiency of GH which causes short stature. IGHD1A patients have an absence of GH with severe dwarfism and often develop anti-GH antibodies when given exogenous GH.

Defects in GH1 are a cause of growth hormone deficiency isolated type 1B (IGHD1B) [MIM:612781]; also known as dwarfism of Sindh. IGHD1B is an autosomal recessive deficiency of GH which causes short stature. IGHD1B patients have low but detectable levels of GH. Dwarfism is less severe than in IGHD1A and patients usually respond well to exogenous GH.

Defects in GH1 are the cause of Kowarski syndrome (KWKS) [MIM:262650]; also known as pituitary dwarfism VI.

Defects in GH1 are a cause of growth hormone deficiency isolated type 2 (IGHD2) [MIM:173100]. IGHD2 is an autosomal dominant deficiency of GH which causes short stature. Clinical severity is variable. Patients have a positive response and immunologic tolerance to growth hormone therapy.

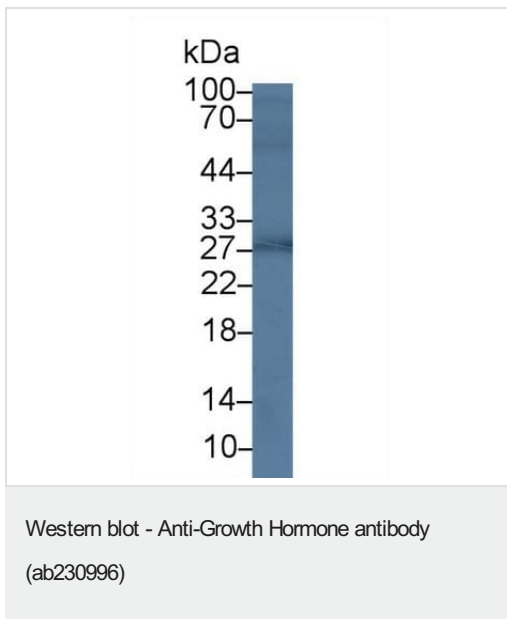
Sequence similarities

Belongs to the somatotropin/prolactin family.

Cellular localization

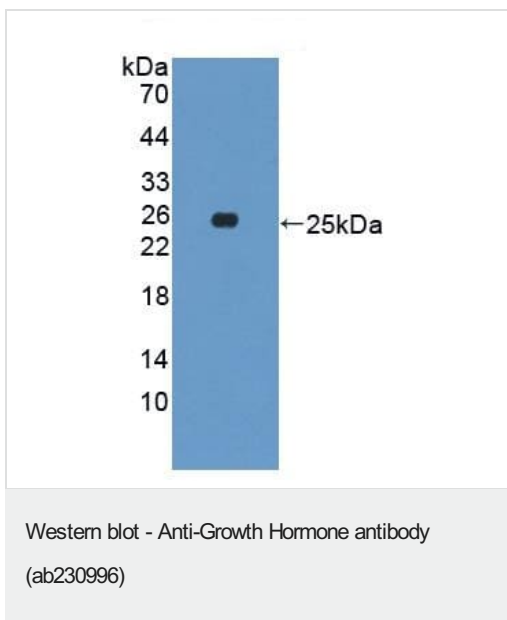
Secreted.

Images



Anti-Growth Hormone antibody (ab230996) at 2 µg/ml + Rat cerebellum lysate

Predicted band size: 24 kDa



Anti-Growth Hormone antibody (ab230996) at 2 µg/ml + Recombinant dog Growth Hormone protein

Predicted band size: 24 kDa

Please note: All products are "FOR RESEARCH USE ONLY. NOT FOR USE IN DIAGNOSTIC PROCEDURES"

Our Abpromise to you: Quality guaranteed and expert technical support

- Replacement or refund for products not performing as stated on the datasheet

- Valid for 12 months from date of delivery
- Response to your inquiry within 24 hours

- We provide support in Chinese, English, French, German, Japanese and Spanish
- Extensive multi-media technical resources to help you
- We investigate all quality concerns to ensure our products perform to the highest standards

If the product does not perform as described on this datasheet, we will offer a refund or replacement. For full details of the Abpromise, please visit <https://www.abcam.com/abpromise> or contact our technical team.

Terms and conditions

- Guarantee only valid for products bought direct from Abcam or one of our authorized distributors