

Product datasheet

Anti-Grp75/MOT antibody ab53098

★★★★★ [2 Abreviews](#) [21 References](#) [4 Images](#)

Overview

Product name	Anti-Grp75/MOT antibody
Description	Rabbit polyclonal to Grp75/MOT
Host species	Rabbit
Specificity	Detects endogenous levels of total Grp75 / MOT protein
Tested applications	Suitable for: ELISA, WB, IHC-P, ICC/IF
Species reactivity	Reacts with: Mouse, Rat, Human, African green monkey
Immunogen	Synthetic peptide corresponding to Human Grp75/MOT aa 630-679. Database link: P38646
General notes	<p>The Life Science industry has been in the grips of a reproducibility crisis for a number of years. Abcam is leading the way in addressing this with our range of recombinant monoclonal antibodies and knockout edited cell lines for gold-standard validation. Please check that this product meets your needs before purchasing.</p> <p>If you have any questions, special requirements or concerns, please send us an inquiry and/or contact our Support team ahead of purchase. Recommended alternatives for this product can be found below, along with publications, customer reviews and Q&As</p>

Properties

Form	Liquid
Storage instructions	Shipped at 4°C. Store at -20°C. Stable for 12 months at -20°C.
Storage buffer	<p>pH: 7.40</p> <p>Preservative: 0.02% Sodium azide</p> <p>Constituents: 50% Glycerol, 0.87% Sodium chloride, PBS</p> <p>Without Mg+2 and Ca+2</p>
Purity	Immunogen affinity purified
Purification notes	Affinity purified from rabbit antiserum by affinity chromatography using epitope specific immunogen.
Clonality	Polyclonal
Isotype	IgG

Applications

The Abpromise guarantee

Our **Abpromise guarantee** covers the use of ab53098 in the following tested applications.

The application notes include recommended starting dilutions; optimal dilutions/concentrations should be determined by the end user.

Application	Abreviews	Notes
ELISA		Use at an assay dependent concentration.
WB	★★★★★ (1)	1/300 - 1/1000. Detects a band of approximately 74 kDa (predicted molecular weight: 74 kDa).
IHC-P	★★★★★ (1)	Use at an assay dependent concentration.
ICC/IF		Use a concentration of 1 µg/ml.

Target

Function

Implicated in the control of cell proliferation and cellular aging. May also act as a chaperone.

Sequence similarities

Belongs to the heat shock protein 70 family.

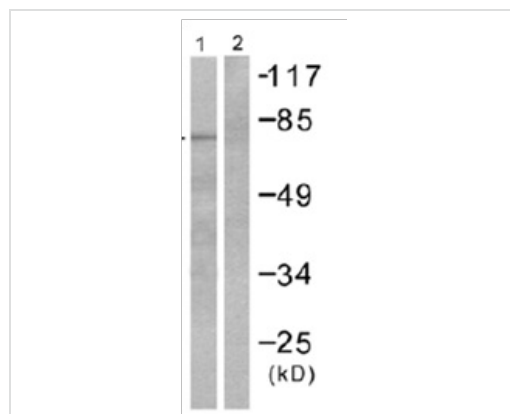
Post-translational modifications

Phosphorylated upon DNA damage, probably by ATM or ATR.

Cellular localization

Mitochondrion.

Images



Western blot - Anti-Grp75/MOT antibody (ab53098)

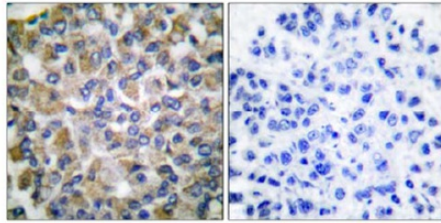
All lanes : Anti-Grp75/MOT antibody (ab53098) at 1/300 dilution

Lane 1 : COS-7 (African green monkey kidney fibroblast-like cell line) cell extract

Lane 2 : COS-7 (African green monkey kidney fibroblast-like cell line) cell extract with peptide

Predicted band size: 74 kDa

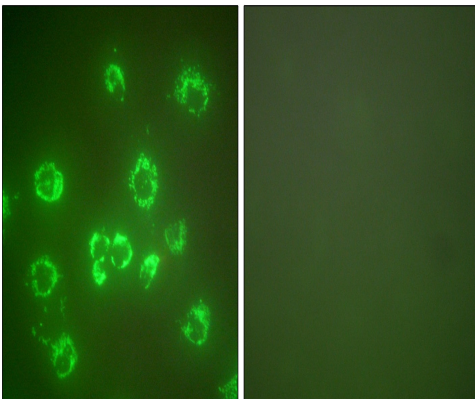
Observed band size: 74 kDa



Peptide - +

Immunohistochemistry (Formalin/PFA-fixed paraffin-embedded sections) - Anti-Grp75/MOT antibody (ab53098)

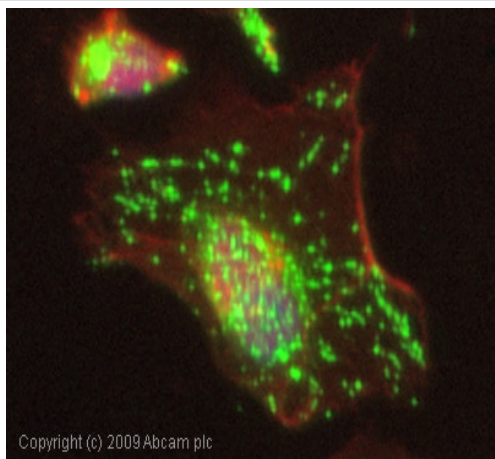
Immunohistochemical analysis of Grp75/MOT in paraffin-embedded human breast carcinoma tissue, using ab53098 at 1/50 dilution, in the presence (right) or absence (left) of peptide.



Peptide - +

Immunocytochemistry/ Immunofluorescence - Anti-Grp75/MOT antibody (ab53098)

Immunocytochemistry/ Immunofluorescence analysis of Grp75/MOT in COS-7 (African green monkey kidney fibroblast-like) cells, using ab53098 at 1/100 dilution, in the presence (right) or absence (left) of peptide.



Immunocytochemistry/ Immunofluorescence - Anti-Grp75/MOT antibody (ab53098)

ICC/IF image of ab53098 stained HeLa cells. The cells were 4% PFA fixed (10 min) and then incubated in 1%BSA / 10% normal goat serum / 0.3M glycine in 0.1% PBS-Tween for 1h to permeabilise the cells and block non-specific protein-protein interactions. The cells were then incubated with the antibody (ab53098, 1µg/ml) overnight at +4°C. The secondary antibody (green) was Alexa Fluor® 488 goat anti-rabbit IgG (H+L) used at a 1/1000 dilution for 1h. Alexa Fluor® 594 WGA was used to label plasma membranes (red) at a 1/200 dilution for 1h. DAPI was used to stain the cell nuclei (blue) at a concentration of 1.43µM.

Please note: All products are "FOR RESEARCH USE ONLY. NOT FOR USE IN DIAGNOSTIC PROCEDURES"

Our Abpromise to you: Quality guaranteed and expert technical support

- Replacement or refund for products not performing as stated on the datasheet
- Valid for 12 months from date of delivery
- Response to your inquiry within 24 hours
- We provide support in Chinese, English, French, German, Japanese and Spanish
- Extensive multi-media technical resources to help you
- We investigate all quality concerns to ensure our products perform to the highest standards

If the product does not perform as described on this datasheet, we will offer a refund or replacement. For full details of the Abpromise, please visit <https://www.abcam.com/abpromise> or contact our technical team.

Terms and conditions

- Guarantee only valid for products bought direct from Abcam or one of our authorized distributors