

## Product datasheet

### Anti-GRP94 antibody ab13509

★★★★★ [1 Abreviews](#) [19 References](#) [3 Images](#)

#### Overview

<b>Product name</b>	Anti-GRP94 antibody
<b>Description</b>	Rabbit polyclonal to GRP94
<b>Host species</b>	Rabbit
<b>Tested applications</b>	<b>Suitable for:</b> WB, ICC/IF
<b>Species reactivity</b>	<b>Reacts with:</b> Mouse, Rat, Human
<b>Immunogen</b>	Synthetic peptide corresponding to Mouse GRP94 aa 787-802 (C terminal) conjugated to Keyhole Limpet Haemocyanin (KLH). Sequence: EEEEETEKESTEKDEL

Database link: [P08113](#)

 [Run BLAST with](#)

 [Run BLAST with](#)

#### General notes

The Life Science industry has been in the grips of a reproducibility crisis for a number of years. Abcam is leading the way in addressing this with our range of recombinant monoclonal antibodies and knockout edited cell lines for gold-standard validation. Please check that this product meets your needs before purchasing.

If you have any questions, special requirements or concerns, please send us an inquiry and/or contact our Support team ahead of purchase. Recommended alternatives for this product can be found below, along with publications, customer reviews and Q&As

#### Properties

<b>Form</b>	Liquid
<b>Storage instructions</b>	Shipped at 4°C. Upon delivery aliquot and store at -20°C or -80°C. Avoid repeated freeze / thaw cycles.
<b>Storage buffer</b>	Preservative: 0.09% Sodium azide Constituents: 50% Glycerol (glycerin, glycerine), 49% PBS
<b>Purity</b>	Protein A purified
<b>Clonality</b>	Polyclonal
<b>Isotype</b>	IgG

## Applications

### The Abpromise guarantee

Our **Abpromise guarantee** covers the use of ab13509 in the following tested applications.

The application notes include recommended starting dilutions; optimal dilutions/concentrations should be determined by the end user.

Application	Abreviews	Notes
WB	★★★★★ (1)	Use at an assay dependent concentration. Predicted molecular weight: 94 kDa. 2µg/mL of ab13509 detects of Grp94 in 20µg of Rat Brain Tissue Extract using colorimetric analysis. 1/2000 for ECL detection.
ICC/IF		Use a concentration of 1 µg/ml.

## Target

### Function

Molecular chaperone that functions in the processing and transport of secreted proteins. Functions in endoplasmic reticulum associated degradation (ERAD). Has ATPase activity.

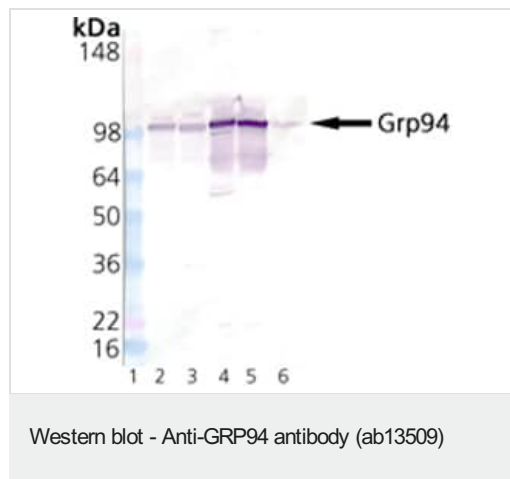
### Sequence similarities

Belongs to the heat shock protein 90 family.

### Cellular localization

Endoplasmic reticulum lumen. Melanosome. Identified by mass spectrometry in melanosome fractions from stage I to stage IV.

## Images



**All lanes :** Anti-GRP94 antibody (ab13509) at 1/1000 dilution

**Lane 1 :** Molecular weight ladder

**Lane 2 :** Lysates prepared from rat brain

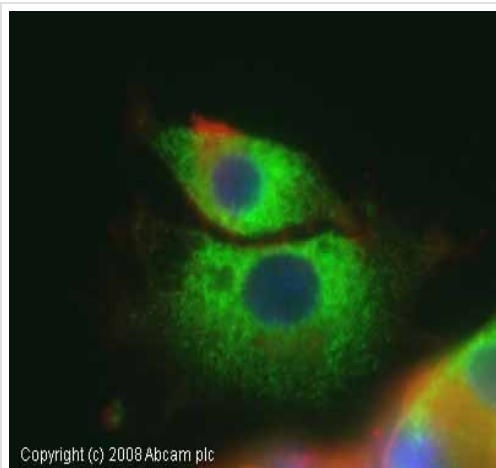
**Lane 3 :** Lysates prepared from mouse brain

**Lane 4 :** Lysates prepared from rat liver microsomes

**Lane 5 :** Lysates prepared from mouse liver microsomes

**Lane 6 :** Lysates prepared from human liver microsomes

**Predicted band size:** 94 kDa



Immunocytochemistry/ Immunofluorescence - Anti-GRP94 antibody (ab13509)

ICC/IF image of ab13509 stained rat PC12 cells. The cells were 4% PFA and 100% methanol fixed (10 min) and then incubated in 1% BSA / 10% normal goat serum / 0.3M glycine in 0.1% PBS-Tween for 1h to permeabilise the cells and block non-specific protein-protein interactions. The cells were then incubated with the antibody (ab13509, 1 µg/ml) overnight at +4°C. The secondary antibody (green) was Alexa Fluor® 488 goat anti-rabbit IgG (H+L) used at a 1/1000 dilution for 1h. Alexa Fluor® 594 WGA was used to label plasma membranes (red) at a 1/200 dilution for 1h. DAPI was used to stain the cell nuclei (blue).



Western blot - Anti-GRP94 antibody (ab13509)

**Please note:** All products are "FOR RESEARCH USE ONLY. NOT FOR USE IN DIAGNOSTIC PROCEDURES"

### Our Abpromise to you: Quality guaranteed and expert technical support

- Replacement or refund for products not performing as stated on the datasheet
- Valid for 12 months from date of delivery

- Response to your inquiry within 24 hours
- We provide support in Chinese, English, French, German, Japanese and Spanish
- Extensive multi-media technical resources to help you
- We investigate all quality concerns to ensure our products perform to the highest standards

If the product does not perform as described on this datasheet, we will offer a refund or replacement. For full details of the Abpromise, please visit <https://www.abcam.com/abpromise> or contact our technical team.

#### **Terms and conditions**

---

- Guarantee only valid for products bought direct from Abcam or one of our authorized distributors