


Product datasheet

Anti-GRPR antibody ab228759

[2 Images](#)

Overview

Product name	Anti-GRPR antibody
Description	Rabbit polyclonal to GRPR
Host species	Rabbit
Tested applications	Suitable for: WB
Species reactivity	Reacts with: Mouse, Human Predicted to work with: Rat, Cow, Pig, Rhesus monkey 
Immunogen	Synthetic peptide within Human GRPR (internal sequence). The exact sequence is proprietary. Database link: P30550
Positive control	WB: HeLa, MOLT-4 and NIH-3T3 whole cell lysate.
General notes	<p>The Life Science industry has been in the grips of a reproducibility crisis for a number of years. Abcam is leading the way in addressing this with our range of recombinant monoclonal antibodies and knockout edited cell lines for gold-standard validation. Please check that this product meets your needs before purchasing.</p> <p>If you have any questions, special requirements or concerns, please send us an inquiry and/or contact our Support team ahead of purchase. Recommended alternatives for this product can be found below, along with publications, customer reviews and Q&As</p>

Properties

Form	Liquid
Storage instructions	Shipped at 4°C. Store at +4°C short term (1-2 weeks). Upon delivery aliquot. Store at -20°C long term. Avoid freeze / thaw cycle.
Storage buffer	pH: 7.00 Preservative: 0.01% Thimerosal (merthiolate) Constituents: 79.99% PBS, 20% Glycerol (glycerin, glycerine)
Purity	Immunogen affinity purified
Clonality	Polyclonal
Isotype	IgG

Applications

The Abpromise guarantee

Our **Abpromise guarantee** covers the use of ab228759 in the following tested applications.

The application notes include recommended starting dilutions; optimal dilutions/concentrations should be determined by the end user.

Application	Abreviews	Notes
WB		1/500 - 1/3000. Predicted molecular weight: 43 kDa.

Target

Function

Receptor for gastrin releasing peptide (GRP). This receptor mediates its action by association with G proteins that activate a phosphatidylinositol-calcium second messenger system.

Tissue specificity

Highly expressed in pancreas. Also expressed in stomach, adrenal cortex and brain.

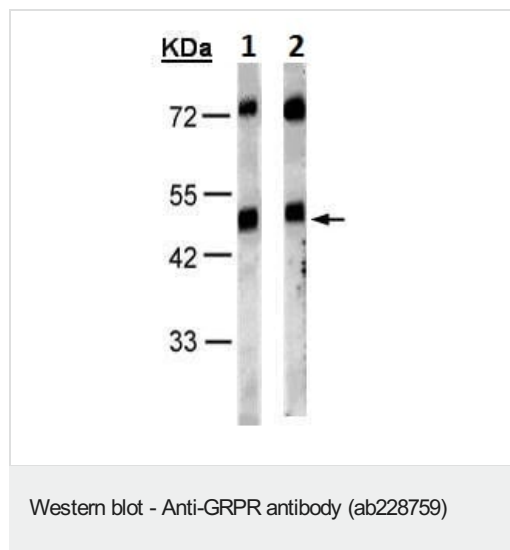
Sequence similarities

Belongs to the G-protein coupled receptor 1 family.

Cellular localization

Cell membrane.

Images



All lanes : Anti-GRPR antibody (ab228759) at 1/1000 dilution

Lane 1 : HeLa (human epithelial cell line from cervix adenocarcinoma) whole cell lysate

Lane 2 : MOLT-4 (human lymphoblastic leukemia cell line) whole cell lysate

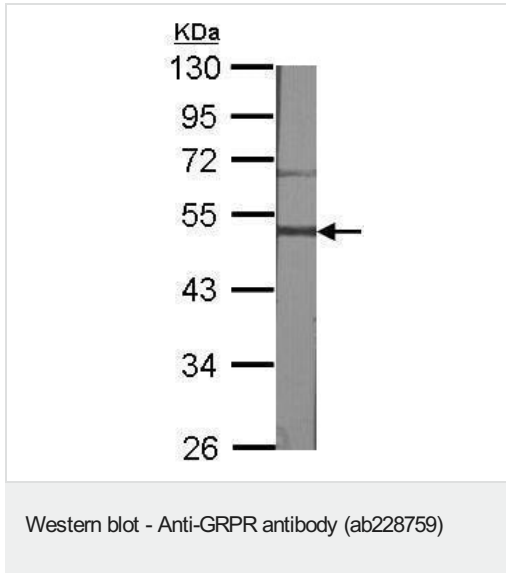
Lysates/proteins at 30 µg per lane.

Developed using the ECL technique.

Performed under reducing conditions.

Predicted band size: 43 kDa

10% SDS-PAGE



Anti-GRPR antibody (ab228759) at 1/1000 dilution + NIH-3T3 (mouse embryo fibroblast cell line) whole cell lysate at 30 µg

Developed using the ECL technique.

Performed under reducing conditions.

Predicted band size: 43 kDa

10% SDS-PAGE

Please note: All products are "FOR RESEARCH USE ONLY. NOT FOR USE IN DIAGNOSTIC PROCEDURES"

Our Abpromise to you: Quality guaranteed and expert technical support

- Replacement or refund for products not performing as stated on the datasheet
- Valid for 12 months from date of delivery
- Response to your inquiry within 24 hours
- We provide support in Chinese, English, French, German, Japanese and Spanish
- Extensive multi-media technical resources to help you
- We investigate all quality concerns to ensure our products perform to the highest standards

If the product does not perform as described on this datasheet, we will offer a refund or replacement. For full details of the Abpromise, please visit <https://www.abcam.com/abpromise> or contact our technical team.

Terms and conditions

- Guarantee only valid for products bought direct from Abcam or one of our authorized distributors