




# Anti-GRX2 antibody ab191292

[4 References](#) [2 Images](#)

## Overview

|                            |   |
|----------------------------|---|
| <b>Product name</b>        | Anti-GRX2 antibody  |
| <b>Description</b>         | Rabbit polyclonal to GRX2   |
| <b>Host species</b>        | Rabbit  |
| <b>Tested applications</b> | <b>Suitable for:</b> WB, IHC-P  |
| <b>Species reactivity</b>  | <b>Reacts with:</b> Rat, Human<br><b>Predicted to work with:</b> Mouse, Cow, Orangutan   |
| <b>Immunogen</b>           | Synthetic peptide corresponding to Human GRX2 aa 100 to the C-terminus (internal sequence).<br>Database link: <a href="#">Q9NS18</a><br> <a href="#">Run BLAST with</a>  <a href="#">Run BLAST with</a>   |
| <b>Positive control</b>    | Rat Testis Tissue Lysate; HeLa, U87, MCF7 and NEU cell lysates; Rat brain tissue.   |
| <b>General notes</b>       | <p>The Life Science industry has been in the grips of a reproducibility crisis for a number of years. Abcam is leading the way in addressing this with our range of recombinant monoclonal antibodies and knockout edited cell lines for gold-standard validation. Please check that this product meets your needs before purchasing.</p> <p>If you have any questions, special requirements or concerns, please send us an inquiry and/or contact our Support team ahead of purchase. Recommended alternatives for this product can be found below, along with publications, customer reviews and Q&amp;As</p> |

## Properties

|                             |  |
|-----------------------------|--|
| <b>Form</b>                 | Liquid   |
| <b>Storage instructions</b> | Shipped at 4°C. Store at +4°C short term (1-2 weeks). Upon delivery aliquot. Store at -20°C long term. Avoid freeze / thaw cycle.                                |
| <b>Storage buffer</b>       | Preservatives: 0.025% Sodium azide, 0.025% Thimerosal (merthiolate)<br>Constituents: 2.5% BSA, 0.45% Sodium chloride, 0.1% Dibasic monohydrogen sodium phosphate |
| <b>Purity</b>               | Immunogen affinity purified  |
| <b>Clonality</b>            | Polyclonal   |
| <b>Isotype</b>              | IgG  |

## Applications

### The Abpromise guarantee

Our **Abpromise guarantee** covers the use of ab191292 in the following tested applications.

The application notes include recommended starting dilutions; optimal dilutions/concentrations should be determined by the end user.

| Application | Abreviews | Notes  |
|-------------|-----------|--|
| WB          |           | Use a concentration of 0.1 - 0.5 µg/ml. Predicted molecular weight: 18 kDa.  |
| IHC-P       |           | Use a concentration of 0.5 - 1 µg/ml. Perform heat mediated antigen retrieval with citrate buffer pH 6 before commencing with IHC staining protocol. |

## Target

### Function

Glutathione-dependent oxidoreductase that facilitates the maintenance of mitochondrial redox homeostasis upon induction of apoptosis by oxidative stress. Involved in response to hydrogen peroxide and regulation of apoptosis caused by oxidative stress. Acts as a very efficient catalyst of monothiol reactions because of its high affinity for protein glutathione-mixed disulfides. Can receive electrons not only from glutathione (GSH), but also from thioredoxin reductase supporting both monothiol and dithiol reactions. Efficiently catalyzes both glutathionylation and deglutathionylation of mitochondrial complex I, which in turn regulates the superoxide production by the complex. Overexpression decreases the susceptibility to apoptosis and prevents loss of cardiolipin and cytochrome c release.

### Tissue specificity

Widely expressed. Expressed in brain, heart, skeletal muscle, colon, thymus, spleen, kidney, liver, small intestine, placenta and lung. Not expressed in peripheral blood leukocytes.

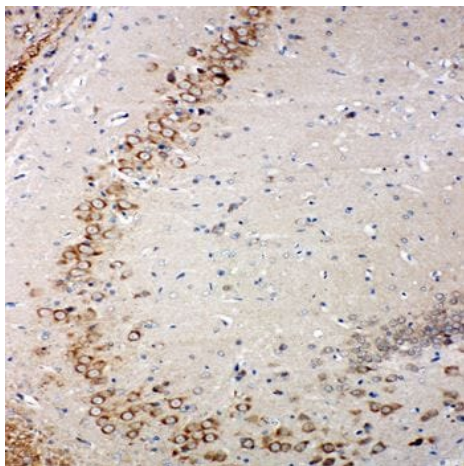
### Sequence similarities

Belongs to the glutaredoxin family.  
Contains 1 glutaredoxin domain.

### Cellular localization

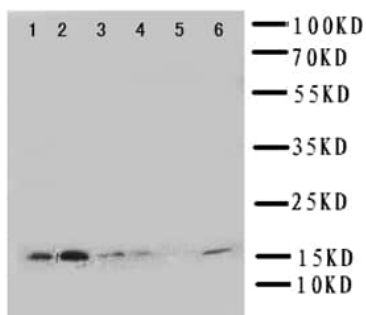
Mitochondrion and Nucleus.

## Images



Immunohistochemical analysis of paraffin-embedded rat brain tissue labeling GRX2 with ab191292 at 1 µg/ml.

Immunohistochemistry (Formalin/PFA-fixed paraffin-embedded sections) - Anti-GRX2 antibody (ab191292)



**All lanes :** Anti-GRX2 antibody (ab191292) at 0.5 µg/ml

**Lane 1 :** Rat Testis Tissue Lysate

**Lane 2 :** HeLa cell Lysate

**Lane 3 :** U87 cell Lysate

**Lane 4 :** NEU cell Lysate

**Lane 5 :** Jurkat cell Lysate

**Lane 6 :** MCF7 cell Lysate

**Predicted band size:** 18 kDa

Western blot - Anti-GRX2 antibody (ab191292)

**Please note:** All products are "FOR RESEARCH USE ONLY. NOT FOR USE IN DIAGNOSTIC PROCEDURES"

### Our Abpromise to you: Quality guaranteed and expert technical support

- Replacement or refund for products not performing as stated on the datasheet
- Valid for 12 months from date of delivery
- Response to your inquiry within 24 hours
- We provide support in Chinese, English, French, German, Japanese and Spanish
- Extensive multi-media technical resources to help you
- We investigate all quality concerns to ensure our products perform to the highest standards

If the product does not perform as described on this datasheet, we will offer a refund or replacement. For full details of the Abpromise, please visit <https://www.abcam.com/abpromise> or contact our technical team.

## Terms and conditions

---

- Guarantee only valid for products bought direct from Abcam or one of our authorized distributors