

Anti-GSAP antibody ab106630

[3 References](#) [3 Images](#)

Overview

Product name	Anti-GSAP antibody
Description	Rabbit polyclonal to GSAP
Host species	Rabbit
Specificity	ab106630 is predicted to not cross-react with other F-box protein family members.
Tested applications	Suitable for: IHC-P, WB
Species reactivity	Reacts with: Mouse
Immunogen	Synthetic peptide corresponding to Human GSAP (C terminal).
Positive control	WB: EL4 cell lysate. IHC-P: Mouse brain tissue.
General notes	<p>The Life Science industry has been in the grips of a reproducibility crisis for a number of years. Abcam is leading the way in addressing this with our range of recombinant monoclonal antibodies and knockout edited cell lines for gold-standard validation. Please check that this product meets your needs before purchasing.</p> <p>If you have any questions, special requirements or concerns, please send us an inquiry and/or contact our Support team ahead of purchase. Recommended alternatives for this product can be found below, along with publications, customer reviews and Q&As</p>

Properties

Form	Liquid
Storage instructions	Shipped at 4°C. Store at +4°C short term (1-2 weeks). Upon delivery aliquot. Store at -20°C long term. Avoid freeze / thaw cycle.
Storage buffer	<p>pH: 7.2</p> <p>Preservative: 0.02% Sodium azide</p> <p>Constituent: 99% PBS</p>
Purity	Immunogen affinity purified
Purification notes	ab106630 was purified by affinity chromatography via a peptide column.
Clonality	Polyclonal
Isotype	IgG

Applications

Applications

The Abpromise guarantee

Our **Abpromise guarantee** covers the use of ab106630 in the following tested applications.

The application notes include recommended starting dilutions; optimal dilutions/concentrations should be determined by the end user.

Application	Abreviews	Notes
IHC-P		Use at an assay dependent concentration.
WB		Use a concentration of 0.25 µg/ml. Predicted molecular weight: 98 kDa.

Target

Function

Regulator of gamma-secretase activity, which specifically activates the production of beta-amyloid protein (beta-amyloid protein 40 and beta-amyloid protein 42), without affecting the cleavage of other gamma-secretase targets such as Notch. The gamma-secretase complex is an endoprotease complex that catalyzes the intramembrane cleavage of integral membrane proteins such as Notch receptors and APP (beta-amyloid precursor protein). Specifically promotes the gamma-cleavage of APP CTF-alpha (also named APP-CTF) by the gamma-secretase complex to generate beta-amyloid, while it reduces the epsilon-cleavage of APP CTF-alpha, leading to a low production of AICD.

Tissue specificity

Widely expressed.

Sequence similarities

Belongs to the GSAP family.

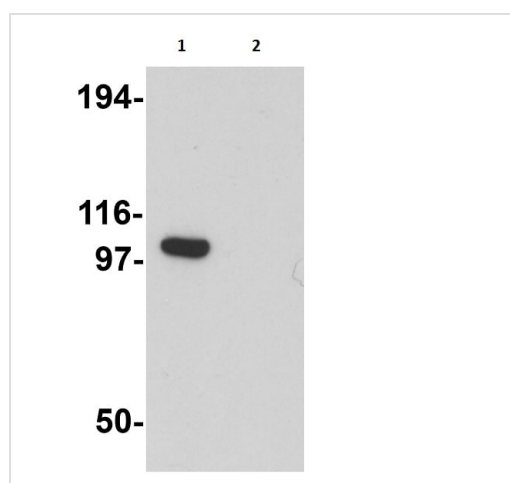
Post-translational modifications

The protein is first synthesized as a holoprotein form of 98 kDa and rapidly processed into the gamma-secretase-activating protein 16 kDa C-terminal form, which constitutes the predominant form.

Cellular localization

Golgi apparatus > trans-Golgi network.

Images



Western blot - Anti-GSAP antibody (ab106630)

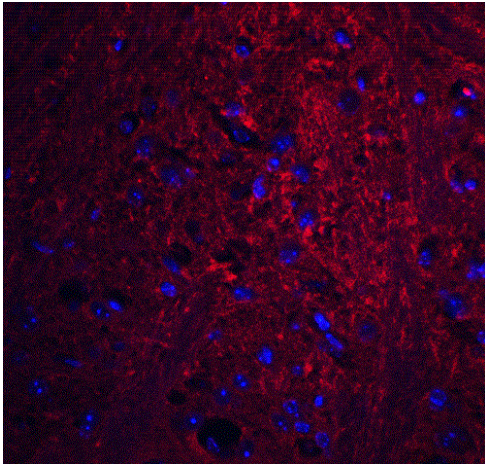
All lanes : Anti-GSAP antibody (ab106630) at 0.25 µg/ml

Lane 1 : EL4 cell lysate

Lane 2 : EL4 cell lysate with blocking peptide

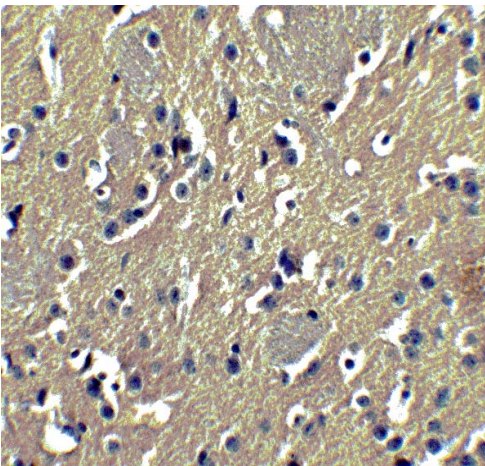
Lysates/proteins at 15 µg per lane.

Predicted band size: 98 kDa



Immunohistochemistry (Formalin/PFA-fixed paraffin-embedded sections) of mouse brain tissue staining GSAP with ab106630 at 20µg/ml

Immunohistochemistry (Formalin/PFA-fixed paraffin-embedded sections) - Anti-GSAP antibody (ab106630)



Immunohistochemistry (Formalin-fixed paraffin embedded sections) of mouse brain tissue labeling GSAP with Anti-GSAP antibody (ab106630) at 5µg/ml.

Immunohistochemistry (Formalin/PFA-fixed paraffin-embedded sections) - Anti-GSAP antibody (ab106630)

Please note: All products are "FOR RESEARCH USE ONLY. NOT FOR USE IN DIAGNOSTIC PROCEDURES"

Our Abpromise to you: Quality guaranteed and expert technical support

- Replacement or refund for products not performing as stated on the datasheet
- Valid for 12 months from date of delivery
- Response to your inquiry within 24 hours
- We provide support in Chinese, English, French, German, Japanese and Spanish
- Extensive multi-media technical resources to help you
- We investigate all quality concerns to ensure our products perform to the highest standards

If the product does not perform as described on this datasheet, we will offer a refund or replacement. For full details of the Abpromise, please visit <https://www.abcam.com/abpromise> or contact our technical team.

Terms and conditions

- Guarantee only valid for products bought direct from Abcam or one of our authorized distributors