

Product datasheet

Anti-GSDMD antibody [EPR19829] ab210070

KO VALIDATED Recombinant RabMAB

★★★★☆ 1 Abreviews 38 References 4 Images

Overview

Product name	Anti-GSDMD antibody [EPR19829]
Description	Rabbit monoclonal [EPR19829] to GSDMD
Host species	Rabbit
Specificity	The expression of C-terminal of GSDMD is upregulated in response to LPS treatment (PMID: 32109412).
Tested applications	Suitable for: WB
Species reactivity	Reacts with: Human
Immunogen	Recombinant full length protein. This information is proprietary to Abcam and/or its suppliers.
Positive control	WB: Recombinant Human GSDMD protein (ab164113), HeLa, 293T, PC-3, and Jurkat whole cell lysates.
General notes	This product is a recombinant monoclonal antibody, which offers several advantages including: <ul style="list-style-type: none">- High batch-to-batch consistency and reproducibility- Improved sensitivity and specificity- Long-term security of supply- Animal-free production For more information see here .

Properties

Form	Liquid
Storage instructions	Shipped at 4°C. Store at +4°C short term (1-2 weeks). Upon delivery aliquot. Store at -20°C long term. Avoid freeze / thaw cycle.
Storage buffer	pH: 7.2 Preservative: 0.01% Sodium azide Constituents: 59% PBS, 40% Glycerol, 0.05% BSA
Purity	Protein A purified
Clonality	Monoclonal
Clone number	EPR19829
Isotype	IgG

Applications

The Abpromise guarantee

Our [Abpromise guarantee](#) covers the use of ab210070 in the following tested applications.

The application notes include recommended starting dilutions; optimal dilutions/concentrations should be determined by the end user.

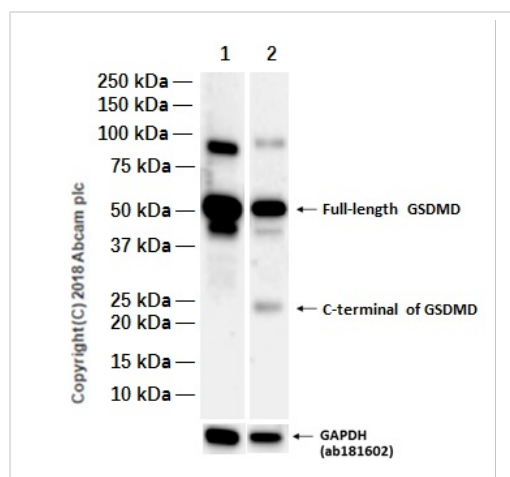
Application	Abreviews	Notes
WB	★★★★★ (1)	1/1000. Detects a band of approximately 52 kDa (predicted molecular weight: 53 kDa).

Target

Sequence similarities

Belongs to the gasdermin family.

Images



Western blot - Anti-GSDMD antibody [EPR19829] (ab210070)

All lanes : Anti-GSDMD antibody [EPR19829] (ab210070) at 1/1000 dilution

Lane 1 : THP-1 (Human monocytic leukemia monocyte) cells were differentiated into macrophage-like cells by incubation in the presence of 50ng/ul PMA for 48h. Then incubated for 90 min without treatment whole cell lysate.

Lane 2 : THP-1 (Human monocytic leukemia monocyte) cells were differentiated into macrophage-like cells by incubation in the presence of 50ng/ul PMA for 48h. Then treated with PrgI and PA (a NAIP-NLRC4 inflammasome trigger) for 90 min whole cell lysate.

Secondary

All lanes : Goat Anti-Rabbit IgG H&L (HRP) ([ab97051](#)) at 1/20000 dilution

Predicted band size: 53 kDa

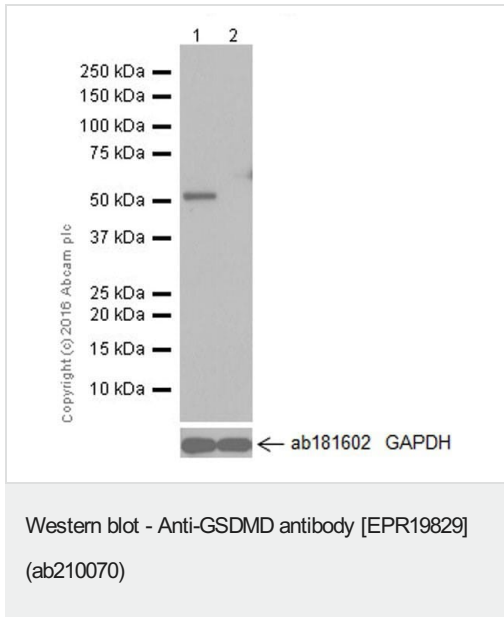
Observed band size: 23,53 kDa

Exposure time: 180 seconds

Blocking and diluting buffer was 5% NFDM/TBST.

The lysates were kindly provided by our collaborator Dr Feng Shao's lab, NIBS.

The 43 kDa band is likely to be a GSDMD cleavage product by caspase-3 at GSDMD Asp88 (PMID: 30902848, PMID: 28392147, PMID: 30135078).



All lanes : Anti-GSDMD antibody [EPR19829] (ab210070) at 1/1000 dilution

Lane 1 : Wild-type HeLa (Human epithelial cell line from cervix adenocarcinoma) cell lysate

Lane 2 : Human Gasdermin-D knockout HeLa (Human epithelial cell line from cervix adenocarcinoma) cell lysate

Lysates/proteins at 20 µg per lane.

Secondary

All lanes : Goat Anti-Rabbit IgG H&L (HRP) (**ab97051**) at 1/100000 dilution

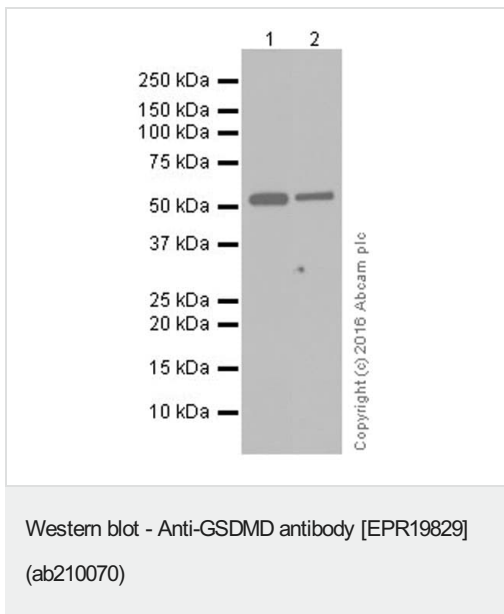
Predicted band size: 53 kDa

Observed band size: 52 kDa

Exposure time: 3 minutes

Blocking/Dilution buffer: 5% NFDm/TBST.

The lysates were kindly provided by our collaborator Dr Feng Shao's lab, NIBS.



All lanes : Anti-GSDMD antibody [EPR19829] (ab210070) at 1/1000 dilution

Lane 1 : PC-3 (Human prostate adenocarcinoma cell line) whole cell lysate

Lane 2 : Jurkat (Human T cell leukemia cell line from peripheral blood) whole cell lysate

Lysates/proteins at 10 µg per lane.

Secondary

All lanes : Goat Anti-Rabbit IgG H&L (HRP) (**ab97051**) at 1/100000 dilution


Predicted band size: 53 kDa

Observed band size: 52 kDa

Exposure time: 3 minutes

Blocking/Dilution buffer: 5% NFD/MTBST.

Why choose a recombinant antibody?



- Research with confidence**
Consistent and reproducible results
- Long-term and scalable supply**
Recombinant technology
- Success from the first experiment**
Confirmed specificity
- Ethical standards compliant**
Animal-free production

Anti-GSDMD antibody [EPR19829] (ab210070)

Please note: All products are "FOR RESEARCH USE ONLY. NOT FOR USE IN DIAGNOSTIC PROCEDURES"

Our Abpromise to you: Quality guaranteed and expert technical support

- Replacement or refund for products not performing as stated on the datasheet
- Valid for 12 months from date of delivery
- Response to your inquiry within 24 hours
- We provide support in Chinese, English, French, German, Japanese and Spanish
- Extensive multi-media technical resources to help you
- We investigate all quality concerns to ensure our products perform to the highest standards

If the product does not perform as described on this datasheet, we will offer a refund or replacement. For full details of the Abpromise, please visit <https://www.abcam.com/abpromise> or contact our technical team.

Terms and conditions

- Guarantee only valid for products bought direct from Abcam or one of our authorized distributors