

Anti-GSK3 alpha antibody ab131344

[1 References](#) [3 Images](#)

Overview

Product name	Anti-GSK3 alpha antibody
Description	Rabbit polyclonal to GSK3 alpha
Host species	Rabbit
Tested applications	Suitable for: WB, IHC-P, ICC/IF
Species reactivity	Reacts with: Human
Immunogen	Synthetic peptide conjugated to KLH, surrounding amino acids 19-23 (T-S-S-F-A) of Human GSK3 alpha (NP_063937.2). Run BLAST with Run BLAST with
Positive control	MCF7 cells; 293 cell extracts; Human breast carcinoma tissue.
General notes	<p>The Life Science industry has been in the grips of a reproducibility crisis for a number of years. Abcam is leading the way in addressing this with our range of recombinant monoclonal antibodies and knockout edited cell lines for gold-standard validation. Please check that this product meets your needs before purchasing.</p> <p>If you have any questions, special requirements or concerns, please send us an inquiry and/or contact our Support team ahead of purchase. Recommended alternatives for this product can be found below, along with publications, customer reviews and Q&As</p>

Properties

Form	Liquid
Storage instructions	Shipped at 4°C. Store at -20°C. Stable for 12 months at -20°C.
Storage buffer	pH: 7.40 Preservative: 0.02% Sodium azide Constituents: 50% Glycerol (glycerin, glycerine), 0.88% Sodium chloride, 49% PBS PBS is without Mg ²⁺ and Ca ²⁺
Purity	Immunogen affinity purified
Purification notes	ab131344 was purified by affinity chromatography using epitope specific peptide.
Clonality	Polyclonal

Isotype

IgG

Applications

The Abpromise guarantee

Our **Abpromise guarantee** covers the use of ab131344 in the following tested applications.

The application notes include recommended starting dilutions; optimal dilutions/concentrations should be determined by the end user.

Application	Abreviews	Notes
WB		1/500 - 1/1000. Detects a band of approximately 51 kDa (predicted molecular weight: 51 kDa).
IHC-P		1/50 - 1/100.
ICC/IF		1/100 - 1/200.

Target

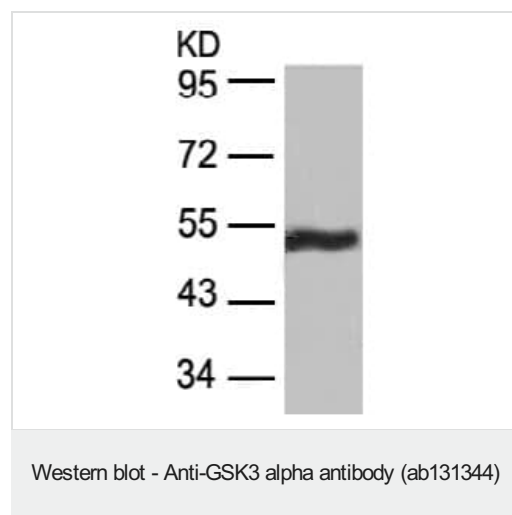
Function

Implicated in the hormonal control of several regulatory proteins including glycogen synthase, MYB and the transcription factor JUN.

Sequence similarities

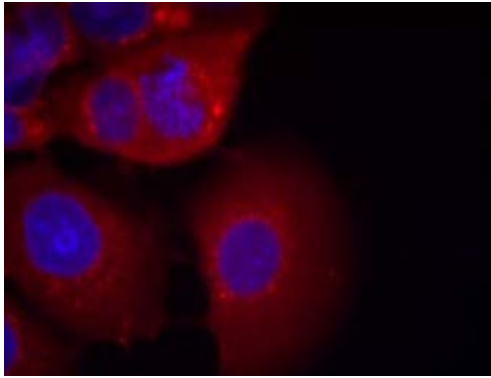
Belongs to the protein kinase superfamily. CMGC Ser/Thr protein kinase family. GSK-3 subfamily. Contains 1 protein kinase domain.

Images



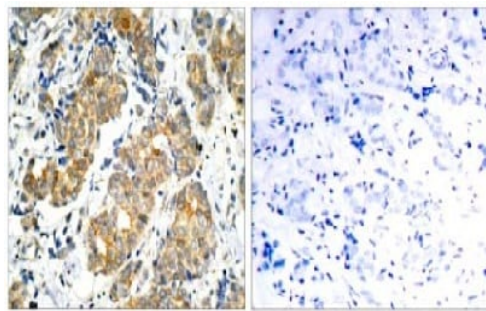
Anti-GSK3 alpha antibody (ab131344) at 1/500 dilution + 293 cell extracts

Predicted band size: 51 kDa



Immunofluorescent analysis of methanol-fixed MCF7 cells labelling GSK3 alpha with ab131344 at 1/100 dilution.

Immunocytochemistry/ Immunofluorescence - Anti-GSK3 alpha antibody (ab131344)



Immunohistochemical analysis of paraffin-embedded Human breast carcinoma tissue labelling GSK3 alpha with ab131344 at 1/50 dilution, in the absence (left) and presence (right) of the blocking peptide.

Immunohistochemistry (Formalin/PFA-fixed paraffin-embedded sections) - Anti-GSK3 alpha antibody (ab131344)

Please note: All products are "FOR RESEARCH USE ONLY. NOT FOR USE IN DIAGNOSTIC PROCEDURES"

Our Abpromise to you: Quality guaranteed and expert technical support

- Replacement or refund for products not performing as stated on the datasheet
- Valid for 12 months from date of delivery
- Response to your inquiry within 24 hours
- We provide support in Chinese, English, French, German, Japanese and Spanish
- Extensive multi-media technical resources to help you
- We investigate all quality concerns to ensure our products perform to the highest standards

If the product does not perform as described on this datasheet, we will offer a refund or replacement. For full details of the Abpromise, please visit <https://www.abcam.com/abpromise> or contact our technical team.

Terms and conditions

- Guarantee only valid for products bought direct from Abcam or one of our authorized distributors