

Product datasheet

Anti-GSK3 beta (phospho Y216) + GSK3 alpha (phospho Y279) antibody ab75745

★★★★★ [5 Abreviews](#) [153 References](#) [4 Images](#)

Overview

Product name	Anti-GSK3 beta (phospho Y216) + GSK3 alpha (phospho Y279) antibody
Description	Rabbit polyclonal to GSK3 beta (phospho Y216) + GSK3 alpha (phospho Y279)
Host species	Rabbit
Specificity	ab75745 detects endogenous levels of GSK3 beta only when phosphorylated at tyrosine 216 and GSK3 alpha when phosphorylated at tyrosine 276. This antibody can also cross-react with GSK3 alpha subunit due to the consistent antigen-sequence of "GEPNVSICSRYY".
Tested applications	Suitable for: ICC/IF, WB, IHC-P
Species reactivity	Reacts with: Mouse, Rat, Human
Immunogen	<p>This product was produced with the following immunogens:</p> <p>Synthetic peptide corresponding to Human GSK3 beta (phospho Y216).</p> <p>Synthetic peptide corresponding to Human GSK3 alpha (phospho Y279).</p> <p>Database link: P49840</p>

 [Run BLAST with](#)

 [Run BLAST with](#)

General notes

The Life Science industry has been in the grips of a reproducibility crisis for a number of years. Abcam is leading the way in addressing this with our range of recombinant monoclonal antibodies and knockout edited cell lines for gold-standard validation. Please check that this product meets your needs before purchasing.

If you have any questions, special requirements or concerns, please send us an inquiry and/or contact our Support team ahead of purchase. Recommended alternatives for this product can be found below, along with publications, customer reviews and Q&As

Properties

Form	Liquid
Storage instructions	Shipped at 4°C. Upon delivery aliquot and store at -20°C. Avoid freeze / thaw cycles.
Storage buffer	<p>pH: 7.40</p> <p>Preservative: 0.02% Sodium azide</p> <p>Constituents: 0.87% Sodium chloride, 50% Glycerol, PBS</p>

	Without Mg ²⁺ and Ca ²⁺
Purity	Immunogen affinity purified
Purification notes	ab75745 was affinity purified from rabbit antiserum by affinity chromatography using epitope specific phosphopeptide. The antibody against non phosphopeptide was removed by chromatography using non phosphopeptide corresponding to the phosphorylation site.
Clonality	Polyclonal
Isotype	IgG

Applications

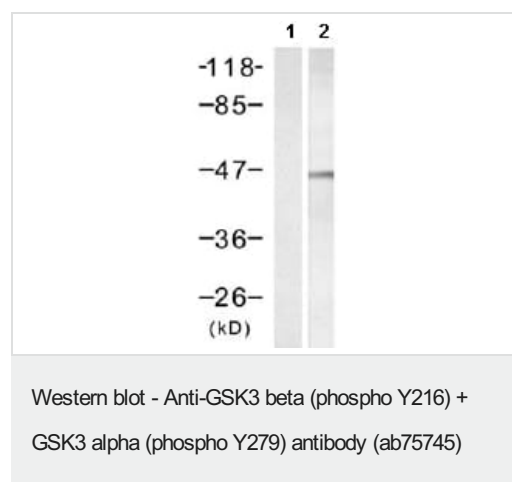
The Abpromise guarantee Our **Abpromise guarantee** covers the use of ab75745 in the following tested applications. The application notes include recommended starting dilutions; optimal dilutions/concentrations should be determined by the end user.

Application	Abreviews	Notes
ICC/IF		1/100 - 1/200.
WB	★★★★★ (4)	1/500 - 1/1000. Predicted molecular weight: 47 kDa. This antibody can be used with studies using ab110532 .
IHC-P		1/50 - 1/100.

Target

Cellular localization GSK3 beta: Cytoplasm. Nucleus. Cell membrane. The phosphorylated form shows localization to cytoplasm and cell membrane. The MEMO1-RHOA-DIAPH1 signaling pathway controls localization of the phosphorylated form to the cell membrane.

Images



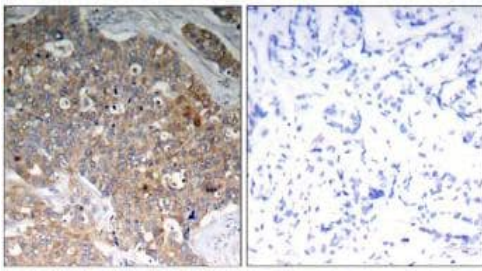
All lanes : Anti-GSK3 beta (phospho Y216) + GSK3 alpha (phospho Y279) antibody (ab75745) at 1/500 dilution

Lane 1 : 293 cell extracts, untreated

Lane 2 : 293 cell extracts, treated with insulin (40μM, 30min)

Predicted band size: 47 kDa

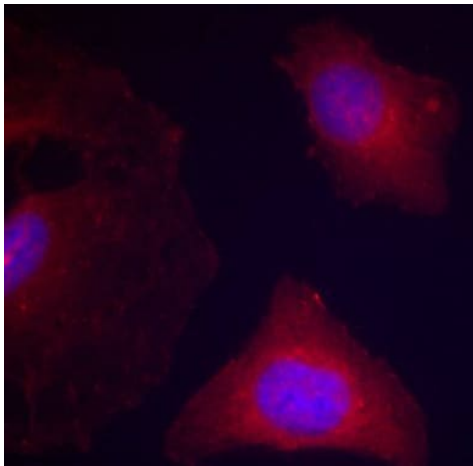
Observed band size: 47 kDa



P-Peptide - +

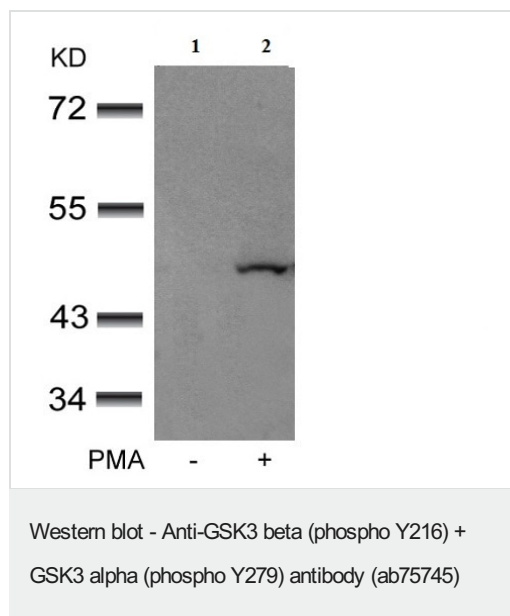
Immunohistochemistry (Formalin/PFA-fixed paraffin-embedded sections) - Anti-GSK3 beta (phospho Y216) + GSK3 alpha (phospho Y279) antibody (ab75745)

ab75745, at a 1/50 dilution, staining GSK3 alpha/beta in paraffin embedded human breast carcinoma tissue by Immunohistochemistry, in the absence (left image) or presence (right image) of the immunizing phospho peptide.



Immunocytochemistry/ Immunofluorescence - Anti-GSK3 beta (phospho Y216) + GSK3 alpha (phospho Y279) antibody (ab75745)

ab75745 at 1/100 dilution staining GSK3 alpha/beta in human HeLa cells by ICC/IF.



All lanes : Anti-GSK3 beta (phospho Y216) + GSK3 alpha (phospho Y279) antibody (ab75745) at 1/500 dilution

Lane 1 : 293 cells untreated PMA

Lane 2 : 293 cells treated PMA

Predicted band size: 47 kDa

Please note: All products are "FOR RESEARCH USE ONLY. NOT FOR USE IN DIAGNOSTIC PROCEDURES"

Our Abpromise to you: Quality guaranteed and expert technical support

- Replacement or refund for products not performing as stated on the datasheet
- Valid for 12 months from date of delivery
- Response to your inquiry within 24 hours
- We provide support in Chinese, English, French, German, Japanese and Spanish
- Extensive multi-media technical resources to help you
- We investigate all quality concerns to ensure our products perform to the highest standards

If the product does not perform as described on this datasheet, we will offer a refund or replacement. For full details of the Abpromise, please visit <https://www.abcam.com/abpromise> or contact our technical team.

Terms and conditions

- Guarantee only valid for products bought direct from Abcam or one of our authorized distributors