

Product datasheet

Anti-GSTA1 antibody ab180650

★★★★☆ [1 Abreviews](#) [4 References](#) [2 Images](#)

Overview

Product name	Anti-GSTA1 antibody
Description	Rabbit polyclonal to GSTA1
Host species	Rabbit
Tested applications	Suitable for: WB, IHC-P
Species reactivity	Reacts with: Mouse, Human
Immunogen	Recombinant full length protein corresponding to Human GSTA1 aa 1-222.

Sequence:

MAEKPKLHYFNARGRMESTRWLLAAAGVEFEEKFIKSAE
DLDKLRNDGYL
MFQQVPMVEIDGMKLVQTRAILNYASKYNLYGKDIKERALI
DMYEGIA
DLGEMILLLPVCPPEEKDAKLALIKEKIKNRYFPAFEKVLK
SHGQDYLVG
NKLSRADIHVELLYVEELDSSLISSFPLLKALKTRISNLPT
VKKFLQP GSPRKPPMDEKSLEEARKIFRF

Database link: [P08263](#)

 [Run BLAST with](#)

 [Run BLAST with](#)

Positive control Mouse liver cell line extract.

General notes The Life Science industry has been in the grips of a reproducibility crisis for a number of years. Abcam is leading the way in addressing this with our range of recombinant monoclonal antibodies and knockout edited cell lines for gold-standard validation. Please check that this product meets your needs before purchasing.

If you have any questions, special requirements or concerns, please send us an inquiry and/or contact our Support team ahead of purchase. Recommended alternatives for this product can be found below, along with publications, customer reviews and Q&As

Properties

Form	Liquid
Storage instructions	Shipped at 4°C. Store at +4°C short term (1-2 weeks). Upon delivery aliquot. Store at -20°C long term. Avoid freeze / thaw cycle.

Storage buffer	pH: 7.30 Preservative: 0.02% Sodium azide Constituents: 50% Glycerol, 49% PBS
Purity	Immunogen affinity purified
Clonality	Polyclonal
Isotype	IgG

Applications

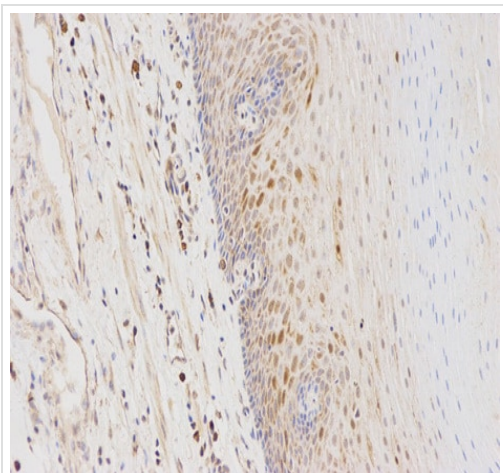
The Abpromise guarantee Our **Abpromise guarantee** covers the use of ab180650 in the following tested applications. The application notes include recommended starting dilutions; optimal dilutions/concentrations should be determined by the end user.

Application	Abreviews	Notes
WB	★★★★★ (1)	1/500 - 1/2000. Predicted molecular weight: 25 kDa.
IHC-P		1/50 - 1/200. ab171870 - Rabbit polyclonal IgG, is suitable for use as an isotype control with this antibody.

Target

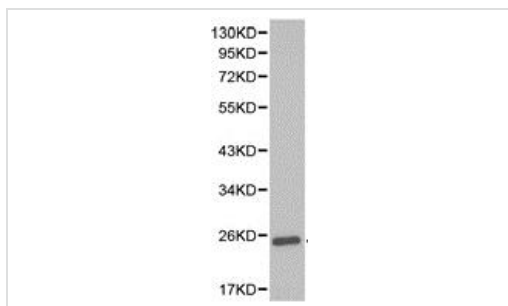
Function	Conjugation of reduced glutathione to a wide number of exogenous and endogenous hydrophobic electrophiles.
Tissue specificity	Liver.
Sequence similarities	Belongs to the GST superfamily. Alpha family. Contains 1 GST C-terminal domain. Contains 1 GST N-terminal domain.
Domain	The C-terminal domain may form a component of the hydrophobic substrate-binding site, but in contrast appears not to be directly involved in GSH binding and is not absolutely essential for catalytic activity.
Cellular localization	Cytoplasm.

Images



Immunohistochemistry (Formalin/PFA-fixed paraffin-embedded sections) analysis of human esophagus tissue labelling GSTA1 with ab180650 at 1/100. Magnification: 200x.

Immunohistochemistry (Formalin/PFA-fixed paraffin-embedded sections) - Anti-GSTA1 antibody (ab180650)



Anti-GSTA1 antibody (ab180650) at 1/500 dilution + Mouse liver cell line extract

Predicted band size: 25 kDa

Western blot - Anti-GSTA1 antibody (ab180650)

Please note: All products are "FOR RESEARCH USE ONLY. NOT FOR USE IN DIAGNOSTIC PROCEDURES"

Our Abpromise to you: Quality guaranteed and expert technical support

- Replacement or refund for products not performing as stated on the datasheet
- Valid for 12 months from date of delivery
- Response to your inquiry within 24 hours
- We provide support in Chinese, English, French, German, Japanese and Spanish

- Extensive multi-media technical resources to help you
- We investigate all quality concerns to ensure our products perform to the highest standards

If the product does not perform as described on this datasheet, we will offer a refund or replacement. For full details of the Abpromise, please visit <https://www.abcam.com/abpromise> or contact our technical team.

Terms and conditions

- Guarantee only valid for products bought direct from Abcam or one of our authorized distributors