



Product datasheet

Anti-GSTK1 antibody ab231549

[1 Abreviews](#) [6 Images](#)

Overview

Product name	Anti-GSTK1 antibody
Description	Rabbit polyclonal to GSTK1
Host species	Rabbit
Tested applications	Suitable for: WB, IHC-P
Species reactivity	Reacts with: Mouse, Human
Immunogen	Recombinant fragment (His-T7-tag) corresponding to Mouse GSTK1 aa 1 to the C-terminus. N-terminal tags. Expressed in E.coli. Database link: Q9DCM2
	 Run BLAST with  Run BLAST with
Positive control	IHC-P: Mouse liver, kidney, brain and stomach tissues. WB: HeLa and Raji cell lysates; Mouse liver and heart lysates; Recombinant human GSTK1 protein.
General notes	<p>The Life Science industry has been in the grips of a reproducibility crisis for a number of years. Abcam is leading the way in addressing this with our range of recombinant monoclonal antibodies and knockout edited cell lines for gold-standard validation. Please check that this product meets your needs before purchasing.</p> <p>If you have any questions, special requirements or concerns, please send us an inquiry and/or contact our Support team ahead of purchase. Recommended alternatives for this product can be found below, along with publications, customer reviews and Q&As</p>

Properties

Form	Liquid
Storage instructions	Shipped at 4°C. Store at +4°C short term (1-2 weeks). Upon delivery aliquot. Store at -20°C long term. Avoid freeze / thaw cycle.
Storage buffer	pH: 7.40 Preservative: 0.02% Sodium azide Constituents: 44.12% PBS, 55.77% Glycerol (glycerin, glycerine)
Purity	Immunogen affinity purified
Purification notes	ab231549 was purified by antigen-specific affinity chromatography followed by Protein A affinity chromatography.
Clonality	Polyclonal

Isotype

IgG

Applications

The Abpromise guarantee

Our **Abpromise guarantee** covers the use of ab231549 in the following tested applications.

The application notes include recommended starting dilutions; optimal dilutions/concentrations should be determined by the end user.

Application	Abreviews	Notes
WB		Use a concentration of 0.5 - 2 µg/ml. Predicted molecular weight: 26 kDa.
IHC-P		Use a concentration of 5 - 20 µg/ml.

Target

Function

Significant glutathione conjugating activity is found only with the model substrate, 1-chloro-2,4-dinitrobenzene (CDNB).

Tissue specificity

Ubiquitous.

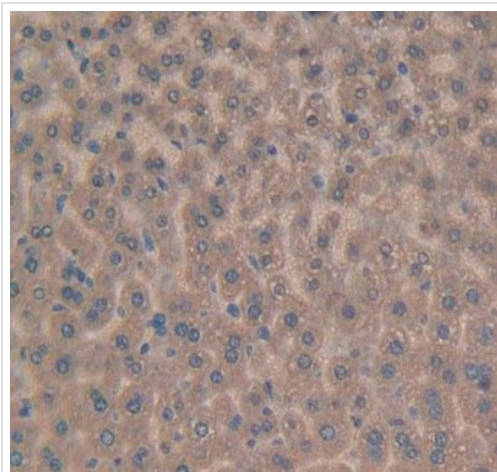
Sequence similarities

Belongs to the GST superfamily. Kappa family.

Cellular localization

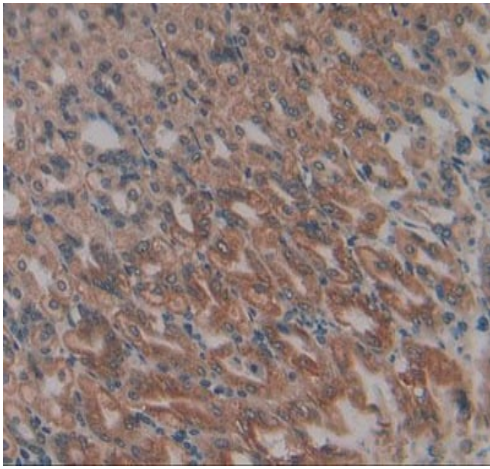
Peroxisome.

Images



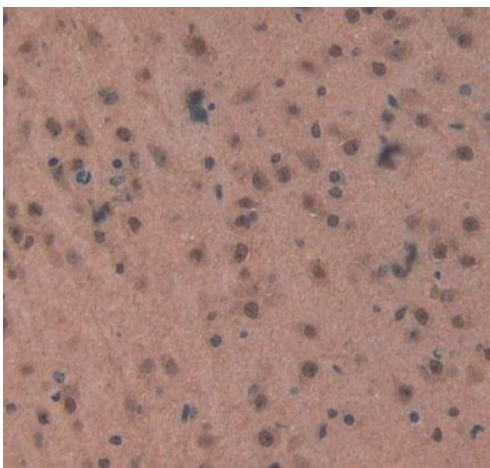
Paraffin-embedded mouse liver tissue stained for GSTK1 using ab231549 at 20 µg/ml in immunohistochemical analysis. DAB staining.

Immunohistochemistry (Formalin/PFA-fixed paraffin-embedded sections) - Anti-GSTK1 antibody (ab231549)



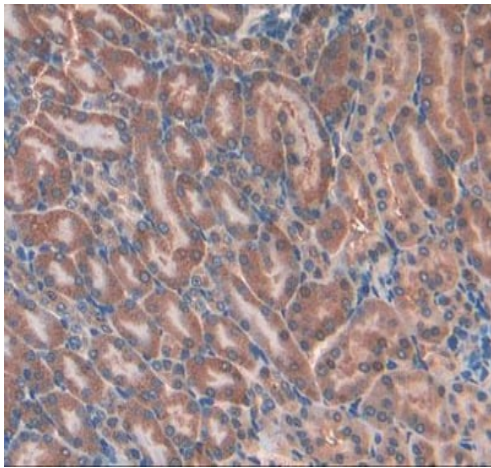
Paraffin-embedded mouse kidney tissue stained for GSTK1 using ab231549 at 20 µg/ml in immunohistochemical analysis. DAB staining.

Immunohistochemistry (Formalin/PFA-fixed paraffin-embedded sections) - Anti-GSTK1 antibody (ab231549)



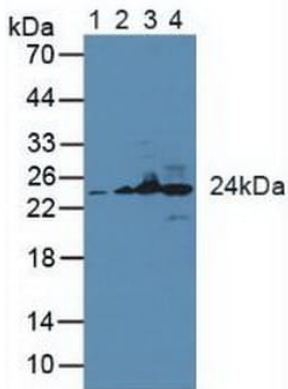
Paraffin-embedded mouse brain tissue stained for GSTK1 using ab231549 at 20 µg/ml in immunohistochemical analysis. DAB staining.

Immunohistochemistry (Formalin/PFA-fixed paraffin-embedded sections) - Anti-GSTK1 antibody (ab231549)



Immunohistochemistry (Formalin/PFA-fixed paraffin-embedded sections) - Anti-GSTK1 antibody (ab231549)

Paraffin-embedded mouse stomach tissue stained for GSTK1 using ab231549 at 20 µg/ml in immunohistochemical analysis. DAB staining.



Western blot - Anti-GSTK1 antibody (ab231549)

All lanes : Anti-GSTK1 antibody (ab231549) at 3 µg/ml

Lane 1 : HeLa (human epithelial cell line from cervix adenocarcinoma) cell lysate

Lane 2 : Raji (human Burkitt's lymphoma cell line) cell lysate

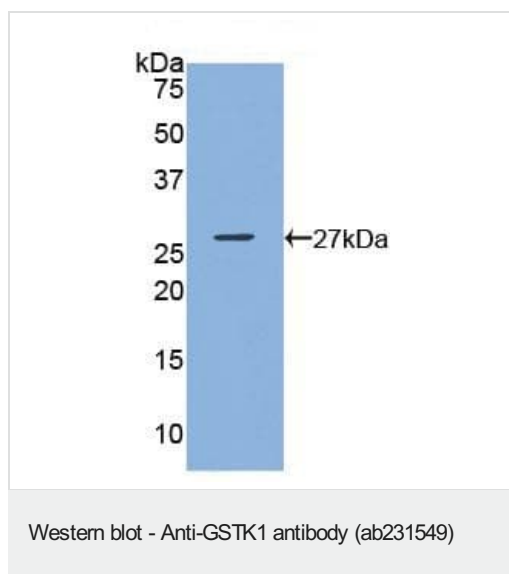
Lane 3 : Mouse liver lysate

Lane 4 : Mouse heart lysate

Secondary

All lanes : HRP-Linked Guinea pig Anti-Rabbit at 1/2000 dilution

Predicted band size: 26 kDa



Anti-GSTK1 antibody (ab231549) at 3 µg/ml + Recombinant human GSTK1 protein

Secondary

HRP-Linked Guinea pig Anti-Rabbit at 1/2000 dilution

Predicted band size: 26 kDa

Please note: All products are "FOR RESEARCH USE ONLY. NOT FOR USE IN DIAGNOSTIC PROCEDURES"

Our Abpromise to you: Quality guaranteed and expert technical support

- Replacement or refund for products not performing as stated on the datasheet
- Valid for 12 months from date of delivery
- Response to your inquiry within 24 hours
- We provide support in Chinese, English, French, German, Japanese and Spanish
- Extensive multi-media technical resources to help you
- We investigate all quality concerns to ensure our products perform to the highest standards

If the product does not perform as described on this datasheet, we will offer a refund or replacement. For full details of the Abpromise, please visit <https://www.abcam.com/abpromise> or contact our technical team.

Terms and conditions

- Guarantee only valid for products bought direct from Abcam or one of our authorized distributors