




Product datasheet

Anti-GTF2H1 antibody ab232982

[1 References](#) [5 Images](#)

Overview

Product name	Anti-GTF2H1 antibody
Description	Rabbit polyclonal to GTF2H1
Host species	Rabbit
Tested applications	Suitable for: WB, IHC-P
Species reactivity	Reacts with: Human, Pig Predicted to work with: Mouse 
Immunogen	Recombinant fragment (His-T7-tag) corresponding to Human GTF2H1 aa 50-350. N-terminal tags. Expressed in E. coli. Database link: P32780  Run BLAST with  Run BLAST with
Positive control	IHC-P: Human liver tissue. WB: Pig cerebrum and liver tissue lysate. HepG2 cell lysate. Recombinant human GTF2H1 protein.
General notes	<p>The Life Science industry has been in the grips of a reproducibility crisis for a number of years. Abcam is leading the way in addressing this with our range of recombinant monoclonal antibodies and knockout edited cell lines for gold-standard validation. Please check that this product meets your needs before purchasing.</p> <p>If you have any questions, special requirements or concerns, please send us an inquiry and/or contact our Support team ahead of purchase. Recommended alternatives for this product can be found below, along with publications, customer reviews and Q&As</p>

Properties

Form	Liquid
Storage instructions	Shipped at 4°C. Store at +4°C short term (1-2 weeks). Upon delivery aliquot. Store at -20°C long term. Avoid freeze / thaw cycle.
Storage buffer	pH: 7.40 Preservative: 0.011% Proclin 300 Constituents: 55.77% Glycerol (glycerin, glycerine), 44.219% PBS
Purity	Protein A purified
Purification notes	Antigen-specific affinity chromatography followed by Protein A affinity chromatography
Clonality	Polyclonal

Isotype

IgG

Applications

The Abpromise guarantee

Our **Abpromise guarantee** covers the use of ab232982 in the following tested applications.

The application notes include recommended starting dilutions; optimal dilutions/concentrations should be determined by the end user.

Application	Abreviews	Notes
WB		Use a concentration of 0.2 - 2 µg/ml. Predicted molecular weight: 62 kDa.
IHC-P		Use a concentration of 5 - 20 µg/ml.

Target

Function

Component of the core-TFIIH basal transcription factor involved in nucleotide excision repair (NER) of DNA and, when complexed to CAK, in RNA transcription by RNA polymerase II.

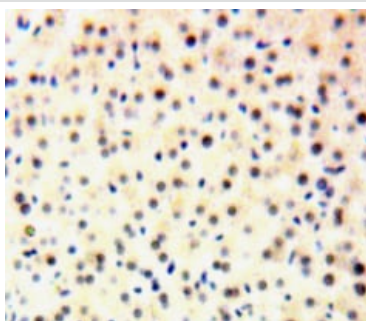
Sequence similarities

Contains 2 BSD domains.

Cellular localization

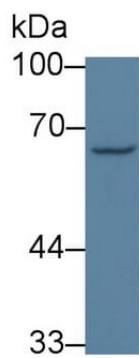
Nucleus.

Images



Formalin-fixed, paraffin-embedded human liver tissue stained for GTF2H1 with ab232982 at 20 µg/ml in immunohistochemical analysis. DAB staining.

Immunohistochemistry (Formalin/PFA-fixed paraffin-embedded sections) - Anti-GTF2H1 antibody (ab232982)



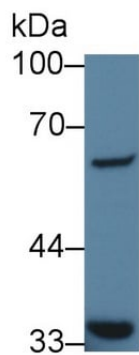
Western blot - Anti-GTF2H1 antibody (ab232982)

Anti-GTF2H1 antibody (ab232982) at 5 µg/ml + Pig cerebrum tissue lysate

Secondary

HRP-Linked Goat anti-Rabbit IgG polyclonal at 0.2 µg/ml

Predicted band size: 62 kDa



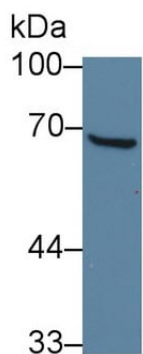
Western blot - Anti-GTF2H1 antibody (ab232982)

Anti-GTF2H1 antibody (ab232982) at 5 µg/ml + HepG2 (Human liver hepatocellular carcinoma cell line) cell lysate

Secondary

HRP-Linked Goat anti-Rabbit IgG polyclonal at 0.2 µg/ml

Predicted band size: 62 kDa



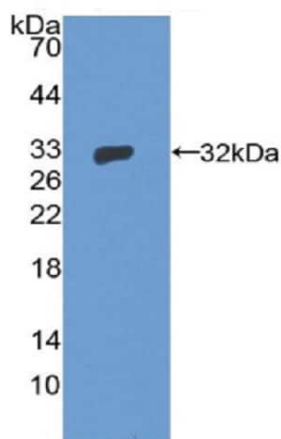
Western blot - Anti-GTF2H1 antibody (ab232982)

Anti-GTF2H1 antibody (ab232982) at 5 µg/ml + Pig liver tissue lysate

Secondary

HRP-Linked Goat anti-Rabbit IgG polyclonal at 0.2 µg/ml

Predicted band size: 62 kDa



Western blot - Anti-GTF2H1 antibody (ab232982)

Anti-GTF2H1 antibody (ab232982) at 2 µg/ml + Recombinant human GTF2H1 protein

Predicted band size: 62 kDa

Please note: All products are "FOR RESEARCH USE ONLY. NOT FOR USE IN DIAGNOSTIC PROCEDURES"

Our Abpromise to you: Quality guaranteed and expert technical support

- Replacement or refund for products not performing as stated on the datasheet
- Valid for 12 months from date of delivery
- Response to your inquiry within 24 hours

- We provide support in Chinese, English, French, German, Japanese and Spanish
- Extensive multi-media technical resources to help you
- We investigate all quality concerns to ensure our products perform to the highest standards

If the product does not perform as described on this datasheet, we will offer a refund or replacement. For full details of the Abpromise, please visit <https://www.abcam.com/abpromise> or contact our technical team.

Terms and conditions

- Guarantee only valid for products bought direct from Abcam or one of our authorized distributors