


## Product datasheet

# Anti-GTF2IRD1 antibody ab64805

[1 Abreviews](#) [1 References](#) [1 Image](#)

### Overview

---

<b>Product name</b>	Anti-GTF2IRD1 antibody
<b>Description</b>	Rabbit polyclonal to GTF2IRD1
<b>Host species</b>	Rabbit
<b>Tested applications</b>	<b>Suitable for:</b> WB
<b>Species reactivity</b>	<b>Reacts with:</b> Human <b>Predicted to work with:</b> Mouse, Rat 
<b>Immunogen</b>	A synthetic peptide derived from N terminus of human GTF2IRD1.
<b>Positive control</b>	Extracts from 293 cells
<b>General notes</b>	<p>The Life Science industry has been in the grips of a reproducibility crisis for a number of years. Abcam is leading the way in addressing this with our range of recombinant monoclonal antibodies and knockout edited cell lines for gold-standard validation. Please check that this product meets your needs before purchasing.</p> <p>If you have any questions, special requirements or concerns, please send us an inquiry and/or contact our Support team ahead of purchase. Recommended alternatives for this product can be found below, along with publications, customer reviews and Q&amp;As</p>

### Properties

---

<b>Form</b>	Liquid
<b>Storage instructions</b>	Shipped at 4°C. Store at -20°C. Stable for 12 months at -20°C.
<b>Storage buffer</b>	pH: 7.40 Preservative: 0.02% Sodium azide Constituents: PBS, 50% Glycerol (glycerin, glycerine), 0.87% Sodium chloride
<b>Purity</b>	Immunogen affinity purified
<b>Purification notes</b>	The antibody was affinity purified from rabbit antiserum by affinity chromatography using epitope specific immunogen.
<b>Clonality</b>	Polyclonal
<b>Isotype</b>	IgG

### Applications

## Applications

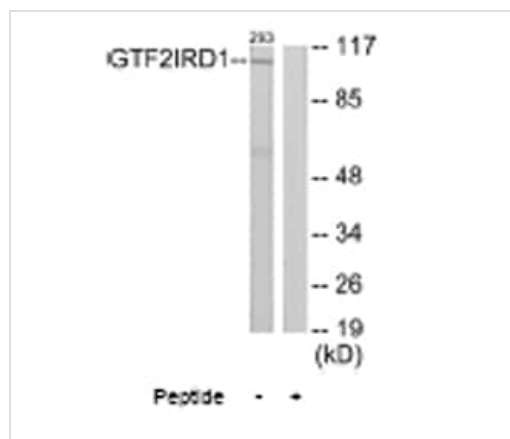
**The Abpromise guarantee** Our **Abpromise guarantee** covers the use of ab64805 in the following tested applications. The application notes include recommended starting dilutions; optimal dilutions/concentrations should be determined by the end user.

Application	Abreviews	Notes
WB		1/500 - 1/1000. Detects a band of approximately 106 kDa (predicted molecular weight: 106 kDa).

## Target

<b>Function</b>	May be a transcription regulator involved in cell-cycle progression and skeletal muscle differentiation. May repress GTF2I transcriptional functions, by preventing its nuclear residency, or by inhibiting its transcriptional activation. May contribute to slow-twitch fiber type specificity during myogenesis and in regenerating muscles. Binds troponin I slow-muscle fiber enhancer (USE B1). Binds specifically and with high affinity to the EFG sequences derived from the early enhancer of HOXC8.
<b>Tissue specificity</b>	Highly expressed in adult skeletal muscle, heart, fibroblast, bone and fetal tissues. Expressed at lower levels in all other tissues tested.
<b>Involvement in disease</b>	Note=GTF2IRD1 is located in the Williams-Beuren syndrome (WBS) critical region. WBS results from a hemizygous deletion of several genes on chromosome 7q11.23, thought to arise as a consequence of unequal crossing over between highly homologous low-copy repeat sequences flanking the deleted region. Haploinsufficiency of GTF2IRD1 may be the cause of certain cardiovascular and musculo-skeletal abnormalities observed in the disease.
<b>Sequence similarities</b>	Belongs to the TFII-I family. Contains 5 GTF2I-like repeats.
<b>Developmental stage</b>	Highly expressed in developing and regenerating muscles, at the time of myofiber diversification.
<b>Domain</b>	The N-terminal half may have an activating activity.
<b>Cellular localization</b>	Nucleus.

## Images



Western blot - Anti-GTF2IRD1 antibody (ab64805)

**All lanes** : Anti-GTF2IRD1 antibody (ab64805) at 1/500 dilution

**Lane 1** : Extracts from 293 cells, no peptide

**Lane 2** : Extracts from 293 cells, plus peptide

Lysates/proteins at 5 µg per lane.

**Predicted band size:** 106 kDa

**Observed band size:** 106 kDa

**Please note:** All products are "FOR RESEARCH USE ONLY. NOT FOR USE IN DIAGNOSTIC PROCEDURES"

### **Our Abpromise to you: Quality guaranteed and expert technical support**

---

- Replacement or refund for products not performing as stated on the datasheet
- Valid for 12 months from date of delivery
- Response to your inquiry within 24 hours
  
- We provide support in Chinese, English, French, German, Japanese and Spanish
- Extensive multi-media technical resources to help you
- We investigate all quality concerns to ensure our products perform to the highest standards

If the product does not perform as described on this datasheet, we will offer a refund or replacement. For full details of the Abpromise, please visit <https://www.abcam.com/abpromise> or contact our technical team.

### **Terms and conditions**

---

- Guarantee only valid for products bought direct from Abcam or one of our authorized distributors