

Product datasheet

Anti-Guanylyl Cyclase alpha 1/GUCY1A3 antibody [EPR12270] α b172480

Recombinant RabMAb

2 Images

Overview

Product name	Anti-Guanylyl Cyclase alpha 1/GUCY1A3 antibody [EPR12270]
Description	Rabbit monoclonal [EPR12270] to Guanylyl Cyclase alpha 1/GUCY1A3
Host species	Rabbit
Tested applications	Suitable for: WB Unsuitable for: ICC/IF, IHC-P or IP
Species reactivity	Reacts with: Human Does not react with: Mouse, Rat
Immunogen	Recombinant fragment within Human Guanylyl Cyclase alpha 1/GUCY1A3. The exact sequence is proprietary. Database link: Q02108
Positive control	Human fetal kidney and fetal lung tissue lysate.
General notes	This product is a recombinant monoclonal antibody, which offers several advantages including: <ul style="list-style-type: none">- High batch-to-batch consistency and reproducibility- Improved sensitivity and specificity- Long-term security of supply- Animal-free production For more information see here . Our RabMAb [®] technology is a patented hybridoma-based technology for making rabbit monoclonal antibodies. For details on our patents, please refer to RabMAb[®] patents .

Properties

Form	Liquid
Storage instructions	Shipped at 4°C. Store at +4°C short term (1-2 weeks). Upon delivery aliquot. Store at -20°C long term. Avoid freeze / thaw cycle.
Storage buffer	pH: 7.20 Preservative: 0.01% Sodium azide Constituents: 9% PBS, 40% Glycerol (glycerin, glycerine), 0.05% BSA, 50% Tissue culture supernatant

Purity	Tissue culture supernatant
Clonality	Monoclonal
Clone number	EPR12270
Isotype	IgG

Applications

The Abpromise guarantee Our **Abpromise guarantee** covers the use of ab172480 in the following tested applications. The application notes include recommended starting dilutions; optimal dilutions/concentrations should be determined by the end user.

Application	Abreviews	Notes
WB		1/1000 - 1/10000. Predicted molecular weight: 77 kDa.

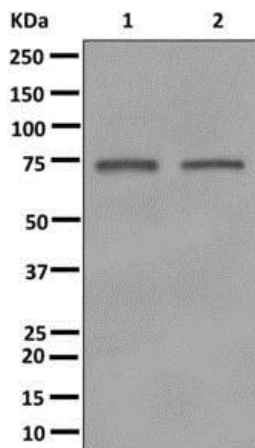
Application notes Is unsuitable for ICC/IF, IHC-P or IP.

Target

Sequence similarities Belongs to the adenylyl cyclase class-4/guanylyl cyclase family. Contains 1 guanylate cyclase domain.

Cellular localization Cytoplasm.

Images



All lanes : Anti-Guanylyl Cyclase alpha 1/GUCY1A3 antibody [EPR12270] (ab172480) at 1/1000 dilution

Lane 1 : Human fetal kidney tissue lysate

Lane 2 : Human fetal lung tissue lysate

Lysates/proteins at 10 µg per lane.

Predicted band size: 77 kDa

Western blot - Anti-Guanylyl Cyclase alpha
1/GUCY1A3 antibody [EPR12270] (ab172480)

Why choose a recombinant antibody?



Research with confidence
Consistent and reproducible results



Long-term and scalable supply
Recombinant technology



Success from the first experiment
Confirmed specificity



Ethical standards compliant
Animal-free production

Anti-Guanylyl Cyclase alpha 1/GUCY1A3 antibody
[EPR12270] (ab172480)

Please note: All products are "FOR RESEARCH USE ONLY. NOT FOR USE IN DIAGNOSTIC PROCEDURES"

Our Abpromise to you: Quality guaranteed and expert technical support

- Replacement or refund for products not performing as stated on the datasheet
- Valid for 12 months from date of delivery
- Response to your inquiry within 24 hours
- We provide support in Chinese, English, French, German, Japanese and Spanish
- Extensive multi-media technical resources to help you
- We investigate all quality concerns to ensure our products perform to the highest standards

If the product does not perform as described on this datasheet, we will offer a refund or replacement. For full details of the Abpromise, please visit <https://www.abcam.com/abpromise> or contact our technical team.

Terms and conditions

- Guarantee only valid for products bought direct from Abcam or one of our authorized distributors