

Product datasheet

Anti-GUCY1A2 antibody ab42108

★★★★★ [1 Abreviews](#) [8 References](#) [2 Images](#)

Overview

Product name	Anti-GUCY1A2 antibody
Description	Rabbit polyclonal to GUCY1A2
Host species	Rabbit
Tested applications	Suitable for: IHC-P, WB
Species reactivity	Reacts with: Mouse, Rat
Immunogen	Synthetic peptide corresponding to Human GUCY1A2 aa 692-708. Sequence: GICYFLEVR TGPKPPKP

 [Run BLAST with](#)

 [Run BLAST with](#)

General notes

The Life Science industry has been in the grips of a reproducibility crisis for a number of years. Abcam is leading the way in addressing this with our range of recombinant monoclonal antibodies and knockout edited cell lines for gold-standard validation. Please check that this product meets your needs before purchasing.

If you have any questions, special requirements or concerns, please send us an inquiry and/or contact our Support team ahead of purchase. Recommended alternatives for this product can be found below, along with publications, customer reviews and Q&As

Properties

Form	Liquid
Storage instructions	Shipped at 4°C. Upon delivery aliquot and store at -20°C or -80°C. Avoid repeated freeze / thaw cycles.
Storage buffer	Antibody stabilization buffer, with preservatives, consisting of Hepes, NaCl, KCl, glycerol, BSA and chaotropic agents.
Purity	Immunogen affinity purified
Clonality	Polyclonal
Isotype	IgG

Applications

The Abpromise guarantee

Our **Abpromise guarantee** covers the use of ab42108 in the following tested applications.

The application notes include recommended starting dilutions; optimal dilutions/concentrations should be determined by the end user.

Application	Abreviews	Notes
IHC-P		1/50 - 1/150.
WB		1/750. Detects a band of approximately 98 kDa (predicted molecular weight: 98 kDa).

Target

Function

Has guanylyl cyclase on binding to the beta-1 subunit.

Isoform 2 acts as a negative regulator of guanylyl cyclase activity as it forms non-functional heterodimers with the beta subunits.

Tissue specificity

Isoform 1 is expressed in fetal brain, liver, colon, endothelium and testis. Isoform 2 is expressed only in liver, colon and endothelium.

Sequence similarities

Belongs to the adenylyl cyclase class-4/guanylyl cyclase family.

Contains 1 guanylate cyclase domain.

Cellular localization

Cytoplasm.

Images

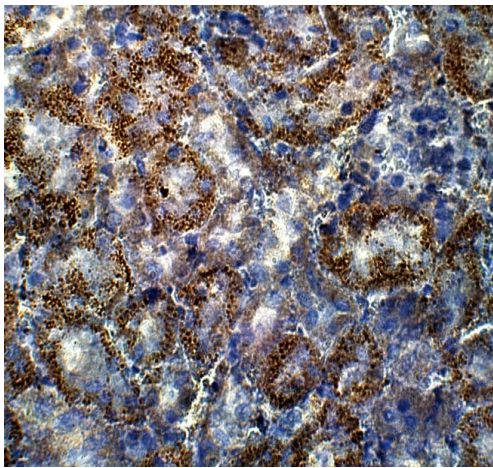


Anti-GUCY1A2 antibody (ab42108) at 1/750 dilution + Soluble Guanylyl Cyclase alpha 2 Antibody Positive Control (Affinity Purified Recombinant full length protein)

Predicted band size: 98 kDa

Observed band size: 98 kDa

Western blot - Anti-GUCY1A2 antibody (ab42108)



Immunohistochemistry (Formalin/PFA-fixed paraffin-embedded sections) analysis of mouse large intestine staining GUCY1A2 with ab42108 at a 1/100 dilution in IHC blocking buffer. DAB (brown) staining and Hematoxylin QS (blue) counterstain. 40X magnification.

Immunohistochemistry (Formalin/PFA-fixed paraffin-embedded sections) - Anti-GUCY1A2 antibody (ab42108)

Please note: All products are "FOR RESEARCH USE ONLY. NOT FOR USE IN DIAGNOSTIC PROCEDURES"

Our Abpromise to you: Quality guaranteed and expert technical support

- Replacement or refund for products not performing as stated on the datasheet
- Valid for 12 months from date of delivery
- Response to your inquiry within 24 hours
- We provide support in Chinese, English, French, German, Japanese and Spanish
- Extensive multi-media technical resources to help you
- We investigate all quality concerns to ensure our products perform to the highest standards

If the product does not perform as described on this datasheet, we will offer a refund or replacement. For full details of the Abpromise, please visit <https://www.abcam.com/abpromise> or contact our technical team.

Terms and conditions

- Guarantee only valid for products bought direct from Abcam or one of our authorized distributors