


### Anti-GUCY1B3 antibody ab24824

[1 Abreviews](#) [8 References](#) [2 Images](#)

#### Overview

Product name	Anti-GUCY1B3 antibody
Description	Rabbit polyclonal to GUCY1B3
Host species	Rabbit
Tested applications	<b>Suitable for:</b> ICC/IF, IHC-P
Species reactivity	<b>Reacts with:</b> Human <b>Predicted to work with:</b> Mouse, Rat, Dog, Pig 
Immunogen	Synthetic peptide corresponding to GUCY1B3.
Positive control	Brain
General notes	<b>This product is FOR RESEARCH USE ONLY. For commercial use, please contact <a href="mailto:partnerships@abcam.com">partnerships@abcam.com</a>.</b>  The Life Science industry has been in the grips of a reproducibility crisis for a number of years. Abcam is leading the way in addressing this with our range of recombinant monoclonal antibodies and knockout edited cell lines for gold-standard validation. Please check that this product meets your needs before purchasing.  If you have any questions, special requirements or concerns, please send us an inquiry and/or contact our Support team ahead of purchase. Recommended alternatives for this product can be found below, along with publications, customer reviews and Q&As

#### Properties

Form	Liquid
Storage instructions	Shipped at 4°C. Upon delivery aliquot and store at -20°C. Avoid freeze / thaw cycles.
Storage buffer	pH: 7.60 Preservative: 0.1% Sodium azide Constituents: PBS, 1% BSA
Purity	Immunogen affinity purified
Clonality	Polyclonal
Isotype	IgG

## Applications

### The Abpromise guarantee

Our **Abpromise guarantee** covers the use of ab24824 in the following tested applications.

The application notes include recommended starting dilutions; optimal dilutions/concentrations should be determined by the end user.

Application	Abreviews	Notes
ICC/IF		Use a concentration of 5 µg/ml.
IHC-P		1/100. Perform heat mediated antigen retrieval before commencing with IHC staining protocol.

## Target

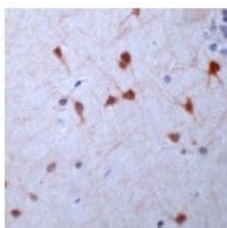
### Sequence similarities

Belongs to the adenylyl cyclase class-4/guanylyl cyclase family.  
Contains 1 guanylate cyclase domain.

### Cellular localization

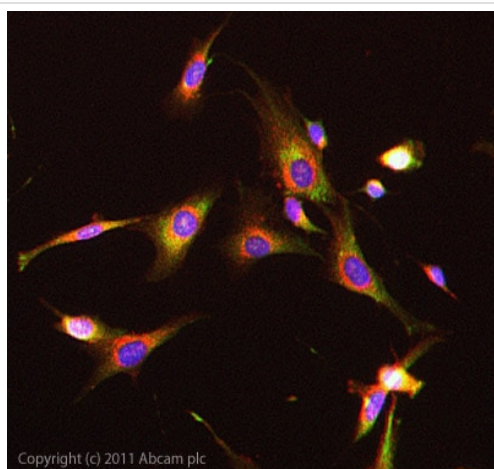
Cytoplasm.

## Images



Human cerebellum stained with Anti GUCY1B3 ab24824 at 1/100 dilution for 30 min at RT.

Immunohistochemistry (Formalin/PFA-fixed paraffin-embedded sections) - Anti-GUCY1B3 antibody (ab24824)



ICC/IF image of ab24824 stained SKNSH cells. The cells were Both and then incubated in 1%BSA / 10% normal goat serum / 0.3M glycine in 0.1% PBS-Tween for 1h to permeabilise the cells and block non-specific protein-protein interactions. The cells were then incubated with the antibody (ab24824, 5µg/ml) overnight at +4°C. The secondary antibody (green) was **ab96899** Dylight 488 goat anti-rabbit IgG (H+L) used at a 1/250 dilution for 1h. Alexa Fluor® 594 WGA was used to label plasma membranes (red) at a 1/200 dilution for 1h. DAPI was used to stain the cell nuclei (blue) at a concentration of 1.43µM.

Immunocytochemistry/ Immunofluorescence - Anti-GUCY1B3 antibody (ab24824)

**Please note:** All products are "FOR RESEARCH USE ONLY. NOT FOR USE IN DIAGNOSTIC PROCEDURES"

### **Our Abpromise to you: Quality guaranteed and expert technical support**

---

- Replacement or refund for products not performing as stated on the datasheet
- Valid for 12 months from date of delivery
- Response to your inquiry within 24 hours
- We provide support in Chinese, English, French, German, Japanese and Spanish
- Extensive multi-media technical resources to help you
- We investigate all quality concerns to ensure our products perform to the highest standards

If the product does not perform as described on this datasheet, we will offer a refund or replacement. For full details of the Abpromise, please visit <https://www.abcam.com/abpromise> or contact our technical team.

### **Terms and conditions**

---

- Guarantee only valid for products bought direct from Abcam or one of our authorized distributors