

Product datasheet

Anti-GULP antibody ab236893

[1 References](#) [2 Images](#)

Overview

Product name	Anti-GULP antibody
Description	Rabbit polyclonal to GULP
Host species	Rabbit
Tested applications	Suitable for: ICC/IF, WB
Species reactivity	Reacts with: Rat, Human
Immunogen	Recombinant fragment corresponding to Human GULP aa 150-300. Database link: Q9UBP9 Run BLAST with Run BLAST with
Positive control	WB: HepG2 whole cell lysate; Rat heart lysate. ICC/IF: HepG2 cells.
General notes	<p>The Life Science industry has been in the grips of a reproducibility crisis for a number of years. Abcam is leading the way in addressing this with our range of recombinant monoclonal antibodies and knockout edited cell lines for gold-standard validation. Please check that this product meets your needs before purchasing.</p> <p>If you have any questions, special requirements or concerns, please send us an inquiry and/or contact our Support team ahead of purchase. Recommended alternatives for this product can be found below, along with publications, customer reviews and Q&As</p>

Properties

Form	Liquid
Storage instructions	Shipped at 4°C. Store at +4°C short term (1-2 weeks). Upon delivery aliquot. Store at -20°C long term. Avoid freeze / thaw cycle.
Storage buffer	pH: 7.40 Preservative: 0.03% Proclin 300 Constituents: 50% Glycerol (glycerin, glycerine), PBS
Purity	Protein G purified
Purification notes	Purity >95%.
Clonality	Polyclonal
Isotype	IgG

Applications

The Abpromise guarantee

Our **Abpromise guarantee** covers the use of ab236893 in the following tested applications.

The application notes include recommended starting dilutions; optimal dilutions/concentrations should be determined by the end user.

Application	Abreviews	Notes
ICC/IF		1/50 - 1/500.
WB		1/2000 - 1/10000. Predicted molecular weight: 34 kDa.

Target

Function

May function as an adapter protein. Required for efficient phagocytosis of apoptotic cells. Modulates cellular glycosphingolipid and cholesterol transport. May play a role in the internalization and endosomal trafficking of various LRP1 ligands, such as PSAP. Increases cellular levels of GTP-bound ARF6.

Tissue specificity

Widely expressed. Detected in macrophages, pancreas, kidney, skeletal muscle, heart, colon, intestine, lung, placenta and ovary.

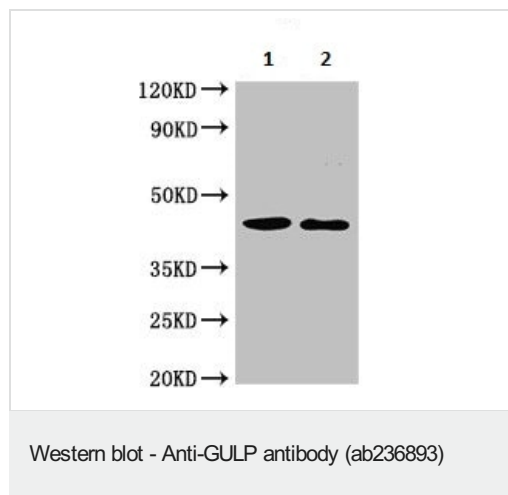
Sequence similarities

Belongs to the ced-6 family.
Contains 1 PID domain.

Cellular localization

Cytoplasm. May associate with the cytoplasmic side of the plasma membrane and early endosomes.

Images



All lanes : Anti-GULP antibody (ab236893) at 1/2000 dilution

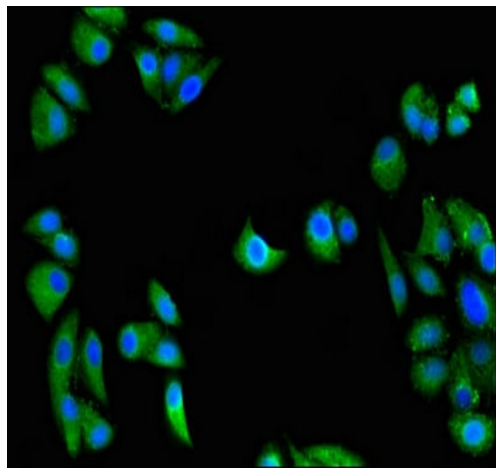
Lane 1 : HepG2 (human liver hepatocellular carcinoma cell line) cell lysate

Lane 2 : Rat heart tissue lysate

Secondary

All lanes : Goat polyclonal to rabbit IgG at 1/50000 dilution

Predicted band size: 34 kDa



Immunocytochemistry/ Immunofluorescence - Anti-GULP antibody (ab236893)

HepG2 (human liver hepatocellular carcinoma cell line) cells labeling GULP using ab236893 at 1/100 dilution in ICC/IF, followed by Alexa Fluor 488[®] conjugated Goat Anti-Rabbit IgG (H+L).

Please note: All products are "FOR RESEARCH USE ONLY. NOT FOR USE IN DIAGNOSTIC PROCEDURES"

Our Abpromise to you: Quality guaranteed and expert technical support

- Replacement or refund for products not performing as stated on the datasheet
- Valid for 12 months from date of delivery
- Response to your inquiry within 24 hours
- We provide support in Chinese, English, French, German, Japanese and Spanish
- Extensive multi-media technical resources to help you
- We investigate all quality concerns to ensure our products perform to the highest standards

If the product does not perform as described on this datasheet, we will offer a refund or replacement. For full details of the Abpromise, please visit <https://www.abcam.com/abpromise> or contact our technical team.

Terms and conditions

- Guarantee only valid for products bought direct from Abcam or one of our authorized distributors