

Anti-H-ERG antibody ab196301

[1 Abreviews](#) [4 References](#) [2 Images](#)

Overview

Product name	Anti-H-ERG antibody
Description	Rabbit polyclonal to H-ERG
Host species	Rabbit
Tested applications	Suitable for: WB, IHC-P
Species reactivity	Reacts with: Human
Immunogen	Synthetic peptide within Human H-ERG conjugated to keyhole limpet haemocyanin. The exact sequence is proprietary. Database link: Q12809
Positive control	HeLa whole cell lysate (ab150035) and Human heart tissue
General notes	<p>The Life Science industry has been in the grips of a reproducibility crisis for a number of years. Abcam is leading the way in addressing this with our range of recombinant monoclonal antibodies and knockout edited cell lines for gold-standard validation. Please check that this product meets your needs before purchasing.</p> <p>If you have any questions, special requirements or concerns, please send us an inquiry and/or contact our Support team ahead of purchase. Recommended alternatives for this product can be found below, along with publications, customer reviews and Q&As</p>

Properties

Form	Liquid
Storage instructions	Shipped at 4°C. Store at +4°C short term (1-2 weeks). Upon delivery aliquot. Store at -20°C long term. Avoid freeze / thaw cycle.
Storage buffer	pH: 7.40 Preservative: 0.02% Sodium azide Constituent: 1% BSA
Purity	Affinity purified
Clonality	Polyclonal
Isotype	IgG

Applications

The Abpromise guarantee

Our **Abpromise guarantee** covers the use of ab196301 in the following tested applications.

The application notes include recommended starting dilutions; optimal dilutions/concentrations should be determined by the end user.

Application	Abreviews	Notes
WB		1/250 - 1/500. Predicted molecular weight: 127 kDa.
IHC-P		1/50 - 1/500.

Target

Function

Pore-forming (alpha) subunit of voltage-gated inwardly rectifying potassium channel. Channel properties are modulated by cAMP and subunit assembly. Mediates the rapidly activating component of the delayed rectifying potassium current in heart (IKr). Isoform 3 has no channel activity by itself, but modulates channel characteristics when associated with isoform 1.

Tissue specificity

Highly expressed in heart and brain.

Involvement in disease

Defects in KCNH2 are the cause of long QT syndrome type 2 (LQT2) [MIM:613688]. Long QT syndromes are heart disorders characterized by a prolonged QT interval on the ECG and polymorphic ventricular arrhythmias. They cause syncope and sudden death in response to exercise or emotional stress. Deafness is often associated with LQT2.

Defects in KCNH2 are the cause of short QT syndrome type 1 (SQT1) [MIM:609620]. Short QT syndromes are heart disorders characterized by idiopathic persistently and uniformly short QT interval on ECG in the absence of structural heart disease in affected individuals. They cause syncope and sudden death.

Sequence similarities

Belongs to the potassium channel family. H (Eag) (TC 1.A.1.20) subfamily. Kv11.1/KCNH2 sub-subfamily.

Contains 1 cyclic nucleotide-binding domain.

Contains 1 PAC (PAS-associated C-terminal) domain.

Contains 1 PAS (PER-ARNT-SIM) domain.

Domain

The segment S4 is probably the voltage-sensor and is characterized by a series of positively charged amino acids at every third position.

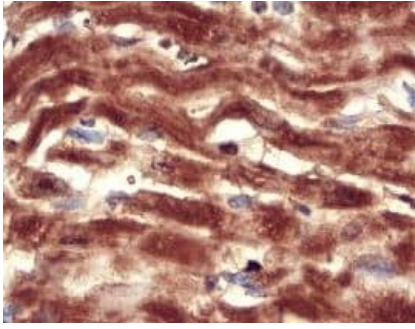
Post-translational modifications

Phosphorylated on serine and threonine residues. Phosphorylation by PKA inhibits ion conduction.

Cellular localization

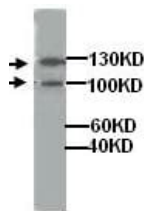
Membrane.

Images



Immunohistochemical staining of paraffin embedded, formalin fixed Human heart tissue labeling H-ERG using ab196301 at 1/200 dilution.

Immunohistochemistry (Formalin/PFA-fixed paraffin-embedded sections) - Anti-H-ERG antibody (ab196301)



Anti-H-ERG antibody (ab196301) at 1/500 dilution + HeLa cell lysate

Predicted band size: 127 kDa

Western blot - Anti-H-ERG antibody (ab196301)

Please note: All products are "FOR RESEARCH USE ONLY. NOT FOR USE IN DIAGNOSTIC PROCEDURES"

Our Abpromise to you: Quality guaranteed and expert technical support

- Replacement or refund for products not performing as stated on the datasheet
- Valid for 12 months from date of delivery
- Response to your inquiry within 24 hours
- We provide support in Chinese, English, French, German, Japanese and Spanish
- Extensive multi-media technical resources to help you
- We investigate all quality concerns to ensure our products perform to the highest standards

If the product does not perform as described on this datasheet, we will offer a refund or replacement. For full details of the Abpromise, please visit <https://www.abcam.com/abpromise> or contact our technical team.

Terms and conditions

- Guarantee only valid for products bought direct from Abcam or one of our authorized distributors