



Product datasheet

Anti-HAGE antibody ab224141

2 Images

Overview

Product name	Anti-HAGE antibody
Description	Rabbit polyclonal to HAGE
Host species	Rabbit
Tested applications	Suitable for: IHC-P, WB
Species reactivity	Reacts with: Human
Immunogen	Recombinant fragment corresponding to Human HAGE aa 100-250. Database link: Q9NXZ2
	<div>  Run BLAST with </div> <div>  Run BLAST with </div>
Positive control	WB: CAPAN-2 cell lysate. IHC-P: Human testis tissue.
General notes	<p>The Life Science industry has been in the grips of a reproducibility crisis for a number of years. Abcam is leading the way in addressing this with our range of recombinant monoclonal antibodies and knockout edited cell lines for gold-standard validation. Please check that this product meets your needs before purchasing.</p> <p>If you have any questions, special requirements or concerns, please send us an inquiry and/or contact our Support team ahead of purchase. Recommended alternatives for this product can be found below, along with publications, customer reviews and Q&As</p>

Properties

Form	Liquid
Storage instructions	Shipped at 4°C. Store at +4°C short term (1-2 weeks). Upon delivery aliquot. Store at -20°C long term. Avoid freeze / thaw cycle.
Storage buffer	pH: 7.20 Preservative: 0.02% Sodium azide Constituents: 40% Glycerol (glycerin, glycerine), PBS
Purity	Immunogen affinity purified
Clonality	Polyclonal
Isotype	IgG

Applications

The Abpromise guarantee

Our **Abpromise guarantee** covers the use of ab224141 in the following tested applications.

The application notes include recommended starting dilutions; optimal dilutions/concentrations should be determined by the end user.

Application	Abreviews	Notes
IHC-P		1/200 - 1/500. Perform heat mediated antigen retrieval with citrate buffer pH 6 before commencing with IHC staining protocol.
WB		Use a concentration of 0.04 - 0.4 µg/ml. Predicted molecular weight: 21,73 kDa.

Target

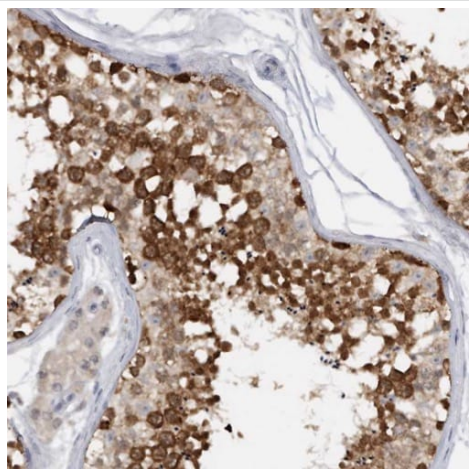
Tissue specificity

Expressed in testis. Expressed in many tumors of various histological types at a level that is 100-fold higher than the level observed in normal tissues except testis.

Sequence similarities

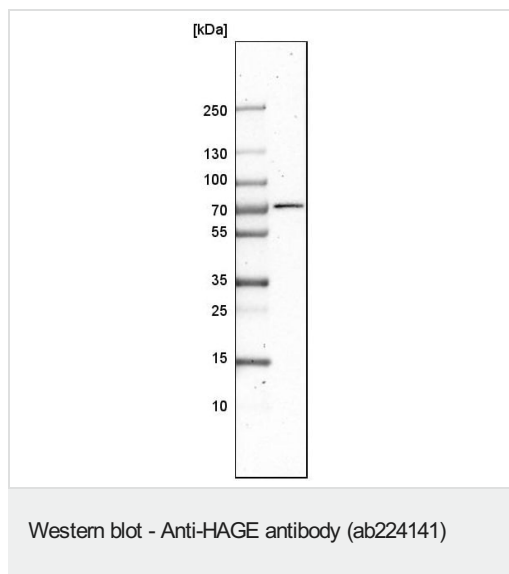
Belongs to the DEAD box helicase family.
Contains 1 helicase ATP-binding domain.
Contains 1 helicase C-terminal domain.
Contains 1 KH domain.

Images



Immunohistochemistry (Formalin/PFA-fixed paraffin-embedded sections) - Anti-HAGE antibody (ab224141)

Paraffin-embedded human testis tissue stained for HAGE using ab224141 at 1/200 dilution in immunohistochemical analysis.



Anti-HAGE antibody (ab224141) at 1/100 dilution + CAPAN-2 cell lysate

Predicted band size: 21,73 kDa

Please note: All products are "FOR RESEARCH USE ONLY. NOT FOR USE IN DIAGNOSTIC PROCEDURES"

Our Abpromise to you: Quality guaranteed and expert technical support

- Replacement or refund for products not performing as stated on the datasheet
- Valid for 12 months from date of delivery
- Response to your inquiry within 24 hours
- We provide support in Chinese, English, French, German, Japanese and Spanish
- Extensive multi-media technical resources to help you
- We investigate all quality concerns to ensure our products perform to the highest standards

If the product does not perform as described on this datasheet, we will offer a refund or replacement. For full details of the Abpromise, please visit <https://www.abcam.com/abpromise> or contact our technical team.

Terms and conditions

- Guarantee only valid for products bought direct from Abcam or one of our authorized distributors