


Product datasheet

Anti-HAPLN1 antibody [EPR6338] ab181997

Recombinant RabMAb

★★★★☆ **3 Abreviews** **3 References** [6 Images](#)

Overview

Product name	Anti-HAPLN1 antibody [EPR6338]
Description	Rabbit monoclonal [EPR6338] to HAPLN1
Host species	Rabbit
Tested applications	Suitable for: WB, IHC-P, ICC/IF, Flow Cyt (Intra)
Species reactivity	Reacts with: Human Predicted to work with: Mouse, Rat 
Immunogen	Synthetic peptide. This information is proprietary to Abcam and/or its suppliers.
Positive control	Human spleen, MCF7 and Caco2 lysates; Human transitional cell carcinoma of bladder tissue; MCF7 cells.
General notes	<p>This product is a recombinant monoclonal antibody, which offers several advantages including:</p> <ul style="list-style-type: none"> - High batch-to-batch consistency and reproducibility - Improved sensitivity and specificity - Long-term security of supply - Animal-free production <p>For more information see here.</p> <p>Our RabMAb[®] technology is a patented hybridoma-based technology for making rabbit monoclonal antibodies. For details on our patents, please refer to RabMAb[®] patents.</p>

Properties

Form	Liquid
Storage instructions	Shipped at 4°C. Store at +4°C short term (1-2 weeks). Upon delivery aliquot. Store at -20°C long term. Avoid freeze / thaw cycle.
Storage buffer	Preservative: 0.01% Sodium azide Constituents: 40% Glycerol, 59% PBS, 0.05% BSA
Purity	Protein A purified
Clonality	Monoclonal
Clone number	EPR6338
Isotype	IgG

Applications

The Abpromise guarantee

Our **Abpromise guarantee** covers the use of ab181997 in the following tested applications.

The application notes include recommended starting dilutions; optimal dilutions/concentrations should be determined by the end user.

Application	Abreviews	Notes
WB	★★★★★ (1)	1/1000. Detects a band of approximately 45 kDa (predicted molecular weight: 40 kDa).
IHC-P		1/50. Perform heat mediated antigen retrieval with Tris/EDTA buffer pH 9.0 before commencing with IHC staining protocol.
ICC/IF		1/250.
Flow Cyt (Intra)		1/2000.

Target

Function

Stabilizes the aggregates of proteoglycan monomers with hyaluronic acid in the extracellular cartilage matrix.

Tissue specificity

Widely expressed. Weakly expressed in the brain.

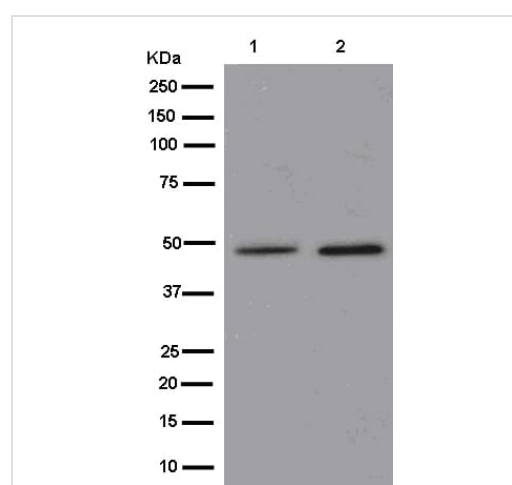
Sequence similarities

Belongs to the HAPLN family.
Contains 1 Ig-like V-type (immunoglobulin-like) domain.
Contains 2 Link domains.

Cellular localization

Secreted, extracellular space, extracellular matrix.

Images



Western blot - Anti-HAPLN1 antibody [EPR6338]
(ab181997)

All lanes : Anti-HAPLN1 antibody [EPR6338] (ab181997) at
1/1000 dilution

Lane 1 : MCF7 lysate

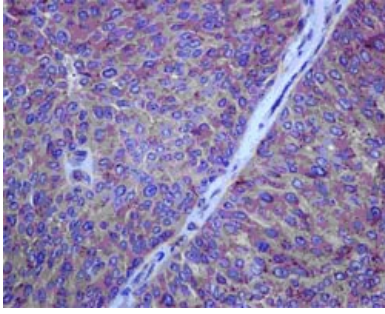
Lane 2 : Caco2 lysate

Lysates/proteins at 10 µg per lane.

Secondary

All lanes : Goat Anti-Rabbit IgG, (H+L)-HRP at 1/1000 dilution

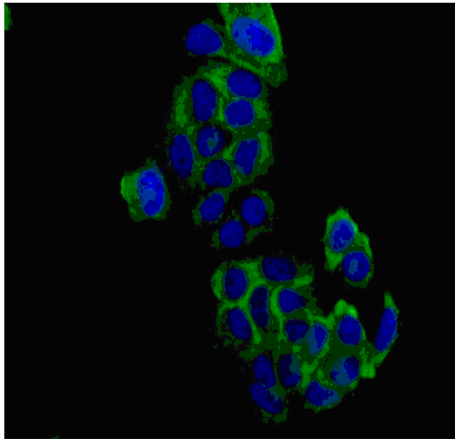
Predicted band size: 40 kDa



Immunohistochemistry (Formalin/PFA-fixed paraffin-embedded sections) - Anti-HAPLN1 antibody [EPR6338] (ab181997)

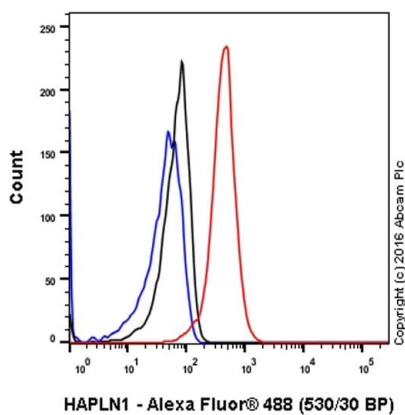
Immunohistochemical analysis of paraffin-embedded Human transitional cell carcinoma of bladder tissue labeling HAPLN1 with ab181997 at 1/50 dilution followed by pre-diluted HRP-conjugated secondary antibody and counter-stained with Hematoxylin.

Perform heat mediated antigen retrieval with EDTA buffer pH 9 before commencing with IHC staining protocol.



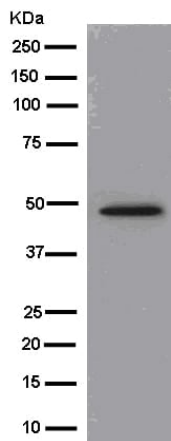
Immunocytochemistry/ Immunofluorescence - Anti-HAPLN1 antibody [EPR6338] (ab181997)

Immunofluorescent analysis of MCF7 cells (paraformaldehyde-fixed, 4%) labeling HAPLN1 with ab181997 at 1/250 dilution, followed by Goat anti rabbit IgG(Dylight 488) at 1/200 dilution and counter-stained with DAPI (blue).



Flow Cytometry (Intracellular) - Anti-HAPLN1 antibody [EPR6338] (ab181997)

Intracellular Flow Cytometry analysis of MCF-7 (human breast carcinoma) cells labeling HAPLN1 with purified ab181997 at 1/2000 dilution (red). The secondary antibody was Goat anti rabbit IgG (Alexa Fluor® 488) at 1/2000 dilution. A Rabbit monoclonal IgG (Black) was used as the isotype control and cells without incubation with primary antibody and secondary antibody (Blue) were used as unlabeled control.



Western blot - Anti-HAPLN1 antibody [EPR6338] (ab181997)

Anti-HAPLN1 antibody [EPR6338] (ab181997) at 1/1000 dilution + Human spleen lysate at 10 µg

Secondary

Goat Anti-Rabbit IgG H&L (HRP) ([ab136636](#)) at 1/1000 dilution

Predicted band size: 40 kDa

Why choose a recombinant antibody?



Research with confidence
Consistent and reproducible results



Long-term and scalable supply
Recombinant technology



Success from the first experiment
Confirmed specificity



Ethical standards compliant
Animal-free production

Anti-HAPLN1 antibody [EPR6338] (ab181997)

Please note: All products are "FOR RESEARCH USE ONLY. NOT FOR USE IN DIAGNOSTIC PROCEDURES"

Our Abpromise to you: Quality guaranteed and expert technical support

- Replacement or refund for products not performing as stated on the datasheet
- Valid for 12 months from date of delivery
- Response to your inquiry within 24 hours
- We provide support in Chinese, English, French, German, Japanese and Spanish
- Extensive multi-media technical resources to help you
- We investigate all quality concerns to ensure our products perform to the highest standards

If the product does not perform as described on this datasheet, we will offer a refund or replacement. For full details of the Abpromise, please visit <https://www.abcam.com/abpromise> or contact our technical team.

Terms and conditions

- Guarantee only valid for products bought direct from Abcam or one of our authorized distributors