

Anti-HAS1 antibody ab198846

[3 References](#) [2 Images](#)

Overview

Product name	Anti-HAS1 antibody
Description	Rabbit polyclonal to HAS1
Host species	Rabbit
Tested applications	Suitable for: IHC-P, WB
Species reactivity	Reacts with: Human
Immunogen	Synthetic peptide within Human HAS1 (internal sequence). The exact sequence is proprietary. Database link: Q92839
Positive control	Human testis and prostate tissue lysates, Human thyroid cancer tissue
General notes	<p>The Life Science industry has been in the grips of a reproducibility crisis for a number of years. Abcam is leading the way in addressing this with our range of recombinant monoclonal antibodies and knockout edited cell lines for gold-standard validation. Please check that this product meets your needs before purchasing.</p> <p>If you have any questions, special requirements or concerns, please send us an inquiry and/or contact our Support team ahead of purchase. Recommended alternatives for this product can be found below, along with publications, customer reviews and Q&As</p>

Properties

Form	Liquid
Storage instructions	Shipped at 4°C. Store at +4°C short term (1-2 weeks). Upon delivery aliquot. Store at -20°C long term. Avoid freeze / thaw cycle.
Storage buffer	pH: 7.4 Preservative: 0.05% Sodium azide Constituents: 49% PBS, 50% Glycerol
Purity	Immunogen affinity purified
Clonality	Polyclonal
Isotype	IgG

Applications

The Abpromise guarantee

Our **Abpromise guarantee** covers the use of ab198846 in the following tested applications.

The application notes include recommended starting dilutions; optimal dilutions/concentrations should be determined by the end user.

Application	Abreviews	Notes
IHC-P		1/30 - 1/200.
WB		1/200 - 1/1000. Predicted molecular weight: 65 kDa.

Target

Function

Catalyzes the addition of GlcNAc or GlcUA monosaccharides to the nascent hyaluronan polymer. Therefore, it is essential to hyaluronan synthesis a major component of most extracellular matrices that has a structural role in tissues architectures and regulates cell adhesion, migration and differentiation. This is one of the isozymes catalyzing that reaction. Also able to catalyze the synthesis of chito-oligosaccharide depending on the substrate.

Tissue specificity

Widely expressed. Highly expressed in ovary followed by spleen, thymus, prostate, testes and large intestine. Weakly expressed in small intestine.

Pathway

Glycan biosynthesis; hyaluronan biosynthesis.

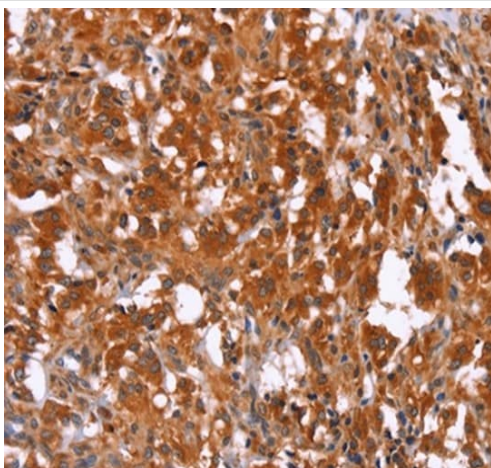
Sequence similarities

Belongs to the NodC/HAS family.

Cellular localization

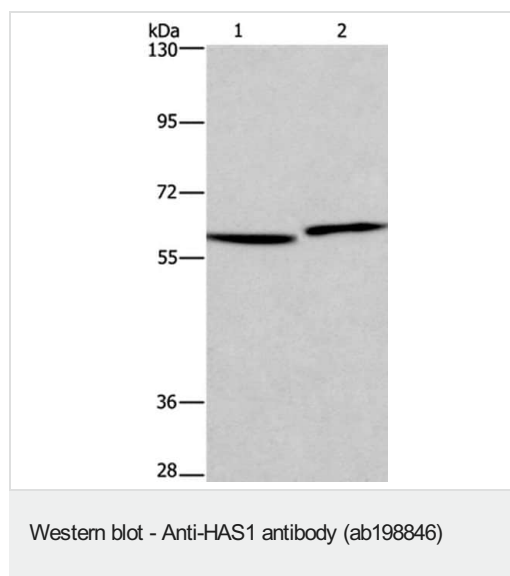
Membrane.

Images



Immunohistochemical analysis of paraffin-embedded Human thyroid cancer tissue labeling HAS1 with ab198846 at 1/30.

Immunohistochemistry (Formalin/PFA-fixed paraffin-embedded sections) - Anti-HAS1 antibody (ab198846)



All lanes : Anti-HAS1 antibody (ab198846) at 1/350 dilution

Lane 1 : Human testis tissue lysate

Lane 2 : Human prostate tissue lysate

Lysates/proteins at 40 µg per lane.

Developed using the ECL technique.

Predicted band size: 65 kDa

Exposure time: 30 seconds

Gel: 6%SDS-PAGE

Please note: All products are "FOR RESEARCH USE ONLY. NOT FOR USE IN DIAGNOSTIC PROCEDURES"

Our Abpromise to you: Quality guaranteed and expert technical support

- Replacement or refund for products not performing as stated on the datasheet
- Valid for 12 months from date of delivery
- Response to your inquiry within 24 hours
- We provide support in Chinese, English, French, German, Japanese and Spanish
- Extensive multi-media technical resources to help you
- We investigate all quality concerns to ensure our products perform to the highest standards

If the product does not perform as described on this datasheet, we will offer a refund or replacement. For full details of the Abpromise, please visit <https://www.abcam.com/abpromise> or contact our technical team.

Terms and conditions

- Guarantee only valid for products bought direct from Abcam or one of our authorized distributors