

Product datasheet

Anti-Haspin antibody ab226222

★★★★★ [1 Abreviews](#) [2 References](#) [1 Image](#)

Overview

Product name	Anti-Haspin antibody
Description	Rabbit polyclonal to Haspin
Host species	Rabbit
Tested applications	Suitable for: ICC/IF
Species reactivity	Reacts with: Human
Immunogen	Recombinant fragment corresponding to Human Haspin aa 1-150. Database link: Q8TF76 Run BLAST with Run BLAST with
Positive control	ICC/IF: A431 cells.
General notes	<p>The Life Science industry has been in the grips of a reproducibility crisis for a number of years. Abcam is leading the way in addressing this with our range of recombinant monoclonal antibodies and knockout edited cell lines for gold-standard validation. Please check that this product meets your needs before purchasing.</p> <p>If you have any questions, special requirements or concerns, please send us an inquiry and/or contact our Support team ahead of purchase. Recommended alternatives for this product can be found below, along with publications, customer reviews and Q&As</p>

Properties

Form	Liquid
Storage instructions	Shipped at 4°C. Store at +4°C short term (1-2 weeks). Upon delivery aliquot. Store at -20°C long term. Avoid freeze / thaw cycle.
Storage buffer	pH: 7.20 Preservative: 0.02% Sodium azide Constituents: 40% Glycerol (glycerin, glycerine), PBS
Purity	Immunogen affinity purified
Clonality	Polyclonal
Isotype	IgG

Applications

The Abpromise guarantee

Our **Abpromise guarantee** covers the use of ab226222 in the following tested applications.

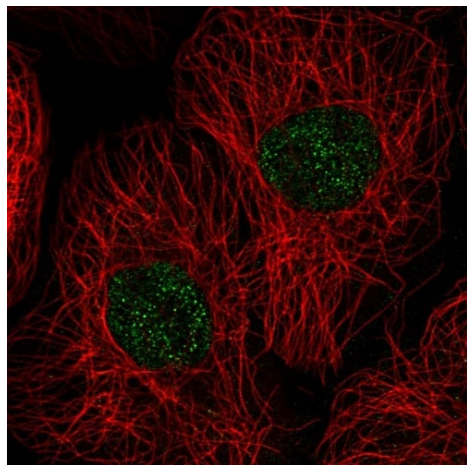
The application notes include recommended starting dilutions; optimal dilutions/concentrations should be determined by the end user.

Application	Abreviews	Notes
ICC/IF		Use a concentration of 0.25 - 2 µg/ml. Fixation/Permeabilization: PFA/Triton X-100.

Target

Function	Required for normal alignment of chromosomes at metaphase. Phosphorylates histone H3 'Thr-3' during mitosis.
Tissue specificity	Strongly expressed in testis. Also present in thymus and bone marrow and low levels observed in prostate, intestine, lung, spleen and lymph node. Expressed in fetal skin, liver, kidney and small intestine and also in proliferating but not non-proliferating cell lines.
Sequence similarities	Belongs to the protein kinase superfamily. Ser/Thr protein kinase family. Haspin subfamily. Contains 1 protein kinase domain.
Post-translational modifications	Autophosphorylated on both serine and threonine residues (By similarity). Phosphorylated during mitosis. Phosphorylated upon DNA damage, probably by ATM or ATR.
Cellular localization	Nucleus.

Images



PFA-fixed, Triton X-100 permeabilized A431 (human epidermoid carcinoma cell line) cells stained for Haspin (green) using ab226222 at 4 µg/ml in ICC/IF.

Immunocytochemistry/ Immunofluorescence - Anti-Haspin antibody (ab226222)

Please note: All products are "FOR RESEARCH USE ONLY. NOT FOR USE IN DIAGNOSTIC PROCEDURES"

Our Abpromise to you: Quality guaranteed and expert technical support

- Replacement or refund for products not performing as stated on the datasheet

- Valid for 12 months from date of delivery
- Response to your inquiry within 24 hours

- We provide support in Chinese, English, French, German, Japanese and Spanish
- Extensive multi-media technical resources to help you
- We investigate all quality concerns to ensure our products perform to the highest standards

If the product does not perform as described on this datasheet, we will offer a refund or replacement. For full details of the Abpromise, please visit <https://www.abcam.com/abpromise> or contact our technical team.

Terms and conditions

- Guarantee only valid for products bought direct from Abcam or one of our authorized distributors