


Anti-HCC1 antibody ab12326

★★★★★ [1 Abreviews](#) [1 Image](#)

Overview

Product name	Anti-HCC1 antibody
Description	Rabbit polyclonal to HCC1
Host species	Rabbit
Tested applications	Suitable for: WB
Species reactivity	Reacts with: Human Predicted to work with: Mouse, Rat, Rabbit, Horse, Guinea pig, Cow, Dog, Pig, Rhesus monkey, Gorilla, Orangutan 
Immunogen	Synthetic peptide corresponding to Human HCC1 aa 480-530. (Peptide available as ab40426)
Positive control	Nuclear extract from HeLa cells.
General notes	<p>The Life Science industry has been in the grips of a reproducibility crisis for a number of years. Abcam is leading the way in addressing this with our range of recombinant monoclonal antibodies and knockout edited cell lines for gold-standard validation. Please check that this product meets your needs before purchasing.</p> <p>If you have any questions, special requirements or concerns, please send us an inquiry and/or contact our Support team ahead of purchase. Recommended alternatives for this product can be found below, along with publications, customer reviews and Q&As</p>

Properties

Form	Liquid
Storage instructions	Shipped at 4°C. Upon delivery aliquot and store at -20°C. Avoid freeze / thaw cycles.
Storage buffer	pH: 7 Preservative: 0.1% Sodium azide Constituents: 0.021% PBS, 1.764% Sodium citrate, 1.815% Tris
Purity	Immunogen affinity purified
Purification notes	Purified using the peptide immobilized on solid support.
Clonality	Polyclonal
Isotype	IgG

Applications

The Abpromise guarantee

Our **Abpromise guarantee** covers the use of ab12326 in the following tested applications.

The application notes include recommended starting dilutions; optimal dilutions/concentrations should be determined by the end user.

Application	Abreviews	Notes
WB	★★★★★ (1)	1/1000 - 1/10000. Predicted molecular weight: 59 kDa.

Target

Function

Transcriptional coactivator for steroid nuclear receptors ESR1/ER-alpha and ESR2/ER-beta, and JUN/AP-1 (By similarity). May be involved in pre-mRNA splicing process.

Tissue specificity

Widely expressed. Highly expressed in pancreas, skeletal muscle, lung and brain. Expressed at intermediate level in kidney, liver and heart.

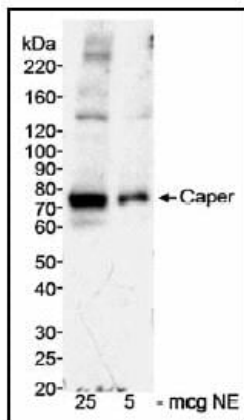
Sequence similarities

Belongs to the splicing factor SR family.
Contains 3 RRM (RNA recognition motif) domains.

Cellular localization

Nucleus speckle. Concentrated in nuclear speckles. Colocalizes with the core spliceosomal snRNP proteins.

Images



Western blot - Anti-HCC1 antibody (ab12326)

Detection of Human Caper by Western Blot. Samples: Nuclear extract (NE) from HeLa cells. Antibody: ab12326 used at 0.3 mcg/ml. Detection: Chemiluminescence with an exposure time of 5 minutes.

Detection of Human Caper by Western Blot. Samples: Nuclear extract (NE) from HeLa cells. Antibody: ab12326 used at 0.3 mcg/ml. Detection: Chemiluminescence with an exposure time of 5 minutes.

Please note: All products are "FOR RESEARCH USE ONLY. NOT FOR USE IN DIAGNOSTIC PROCEDURES"

Our Abpromise to you: Quality guaranteed and expert technical support

- Replacement or refund for products not performing as stated on the datasheet
- Valid for 12 months from date of delivery
- Response to your inquiry within 24 hours
- We provide support in Chinese, English, French, German, Japanese and Spanish

- Extensive multi-media technical resources to help you
- We investigate all quality concerns to ensure our products perform to the highest standards

If the product does not perform as described on this datasheet, we will offer a refund or replacement. For full details of the Abpromise, please visit <https://www.abcam.com/abpromise> or contact our technical team.

Terms and conditions

- Guarantee only valid for products bought direct from Abcam or one of our authorized distributors