


Product datasheet

Anti-HCC1 antibody ab229238

[2 Images](#)

Overview

Product name	Anti-HCC1 antibody
Description	Rabbit polyclonal to HCC1
Host species	Rabbit
Tested applications	Suitable for: WB
Species reactivity	Reacts with: Mouse Predicted to work with: Rat, Rabbit, Cow 
Immunogen	Recombinant fragment within Human HCC1 (internal sequence). The exact sequence is proprietary. Database link: Q14498
Positive control	WB: NIH/3T3, JC and A431 whole cell lysate.
General notes	<p>The Life Science industry has been in the grips of a reproducibility crisis for a number of years. Abcam is leading the way in addressing this with our range of recombinant monoclonal antibodies and knockout edited cell lines for gold-standard validation. Please check that this product meets your needs before purchasing.</p> <p>If you have any questions, special requirements or concerns, please send us an inquiry and/or contact our Support team ahead of purchase. Recommended alternatives for this product can be found below, along with publications, customer reviews and Q&As</p>

Properties

Form	Liquid
Storage instructions	Shipped at 4°C. Store at +4°C short term (1-2 weeks). Upon delivery aliquot. Store at -20°C long term. Avoid freeze / thaw cycle.
Storage buffer	pH: 7.00 Preservative: 0.01% Thimerosal (merthiolate) Constituents: 78.99% PBS, 1% BSA, 20% Glycerol (glycerin, glycerine)
Purity	Immunogen affinity purified
Clonality	Polyclonal
Isotype	IgG

Applications

The Abpromise guarantee

Our **Abpromise guarantee** covers the use of ab229238 in the following tested applications.

The application notes include recommended starting dilutions; optimal dilutions/concentrations should be determined by the end user.

Application	Abreviews	Notes
WB		1/500 - 1/3000. Predicted molecular weight: 59 kDa.

Target

Function

Transcriptional coactivator for steroid nuclear receptors ESR1/ER-alpha and ESR2/ER-beta, and JUN/AP-1 (By similarity). May be involved in pre-mRNA splicing process.

Tissue specificity

Widely expressed. Highly expressed in pancreas, skeletal muscle, lung and brain. Expressed at intermediate level in kidney, liver and heart.

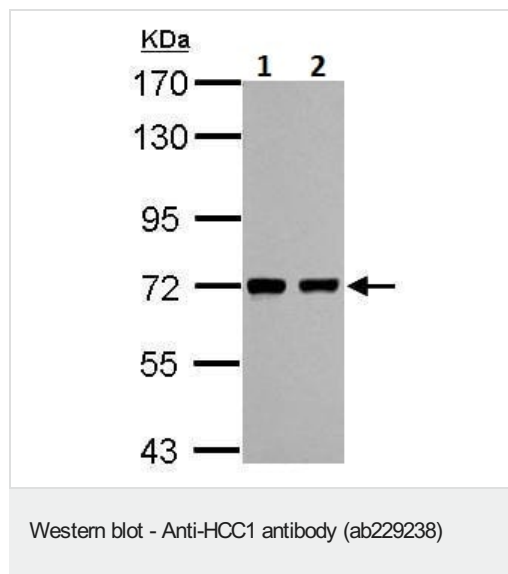
Sequence similarities

Belongs to the splicing factor SR family.
Contains 3 RRM (RNA recognition motif) domains.

Cellular localization

Nucleus speckle. Concentrated in nuclear speckles. Colocalizes with the core spliceosomal snRNP proteins.

Images



All lanes : Anti-HCC1 antibody (ab229238) at 1/1000 dilution

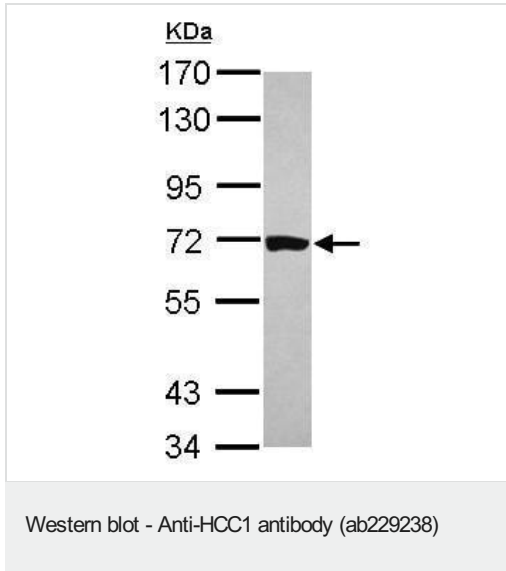
Lane 1 : NIH/3T3 (mouse embryo fibroblast cell line) whole cell lysate

Lane 2 : JC whole cell lysate

Lysates/proteins at 30 µg per lane.

Predicted band size: 59 kDa

7.5% SDS-PAGE gel.



Anti-HCC1 antibody (ab229238) at 1/1000 dilution

Secondary

A431 (human epidermoid carcinoma cell line) whole cell lysate at 30 µg

Predicted band size: 59 kDa

7.5% SDS-PAGE gel.

Please note: All products are "FOR RESEARCH USE ONLY. NOT FOR USE IN DIAGNOSTIC PROCEDURES"

Our Abpromise to you: Quality guaranteed and expert technical support

- Replacement or refund for products not performing as stated on the datasheet
- Valid for 12 months from date of delivery
- Response to your inquiry within 24 hours
- We provide support in Chinese, English, French, German, Japanese and Spanish
- Extensive multi-media technical resources to help you
- We investigate all quality concerns to ensure our products perform to the highest standards

If the product does not perform as described on this datasheet, we will offer a refund or replacement. For full details of the Abpromise, please visit <https://www.abcam.com/abpromise> or contact our technical team.

Terms and conditions

- Guarantee only valid for products bought direct from Abcam or one of our authorized distributors